


Anti-Cyclin K antibody ab85854

★☆☆☆☆ **1 Abreviews** **2 References** 画像数 **4**

製品の概要

| | |
|--------------|---|
| 製品名 | Anti-Cyclin K antibody |
| 製品の詳細 | Rabbit polyclonal to Cyclin K |
| 由来種 | Rabbit |
| アプリケーション | 適用あり: IP, WB, IHC-P |
| 種交差性 | 交差種: Mouse, Human 交差が予測される動物種: Rat, Guinea pig, Cow, Dog, Pig, Chimpanzee, Rhesus monkey, Opossum, Elephant  |
| 免疫原 | Synthetic peptide corresponding to Human Cyclin K aa 500-600. Database link: O75909 |
| ポジティブ・コントロール | WB: HEK-293T, MCF7, Jurkat, HeLa, HepG2, NIH3T3, CH27, TCMK-1, BW5147.3 and CT26 cell lysates IP: HEK-293T cell lysate IHC-P: Human lung carcinoma |
| 特記事項 | <p>The Life Science industry has been in the grips of a reproducibility crisis for a number of years. Abcam is leading the way in addressing this with our range of recombinant monoclonal antibodies and knockout edited cell lines for gold-standard validation. Please check that this product meets your needs before purchasing.</p> <p>If you have any questions, special requirements or concerns, please send us an inquiry and/or contact our Support team ahead of purchase. Recommended alternatives for this product can be found below, along with publications, customer reviews and Q&As</p> |

製品の特性

| | |
|----------|---|
| 製品の状態 | Liquid |
| 保存方法 | Shipped at 4°C. Upon delivery aliquot and store at -20°C. Avoid freeze / thaw cycles. |
| バッファー | pH: 7 Preservative: 0.09% Sodium azide Constituent: Tris citrate/phosphate |
| 精製度 | Immunogen affinity purified |
| 特記事項(精製) | ab85854 was affinity purified using an epitope specific to Cyclin K immobilized on solid support. |
| ポリ/モノ | ポリクローナル |
| アイソタイプ | IgG |

アプリケーション

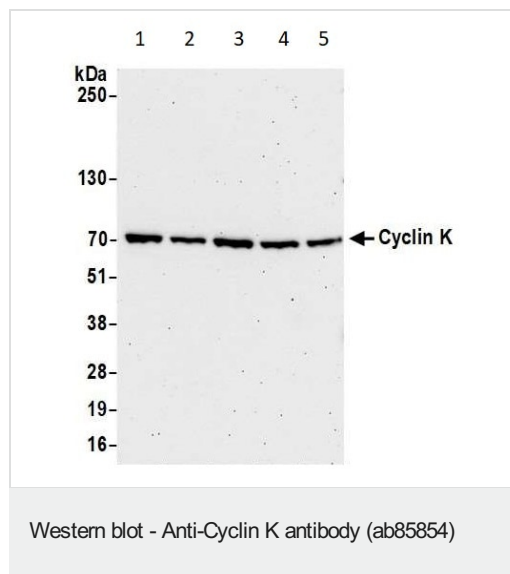
The Abpromise guarantee **Abpromise保証は、** 次のテスト済みアプリケーションにおけるab85854の使用に適用されます
アプリケーションノートには、推奨の開始希釈率がありますが、適切な希釈率につきましてはご検討ください。

| アプリケーション | Abreviews | 特記事項 |
|----------|-----------|---|
| IP | | Use at 2-10 µg/mg of lysate. |
| WB | | 1/2000 - 1/10000. Predicted molecular weight: 66 kDa. |
| IHC-P | | 1/1000 - 1/5000. Perform heat mediated antigen retrieval with citrate buffer pH 6 before commencing with IHC staining protocol. |

ターゲット情報

| | |
|-------|---|
| 機能 | May play a role in transcriptional regulation. In vitro, is associated with a kinase activity toward both RNA polymerase II C-terminal domain and CDK2 (CAK). |
| 組織特異性 | Ubiquitously expressed. Highest levels in testis. |
| 配列類似性 | Belongs to the cyclin family. Cyclin C subfamily. |

画像



All lanes : Anti-Cyclin K antibody (ab85854) at 0.04 µg/ml

Lane 1 : HEK-293T (Human epithelial cell line from embryonic kidney transformed with large T antigen) whole cell lysate

Lane 2 : MCF7 (Human breast adenocarcinoma cell line) whole cell lysate

Lane 3 : Jurkat (Human T cell leukemia cell line from peripheral blood) whole cell lysate

Lane 4 : HeLa (Human epithelial cell line from cervix adenocarcinoma) whole cell lysate

Lane 5 : HepG2 (Human liver hepatocellular carcinoma cell line) whole cell lysate

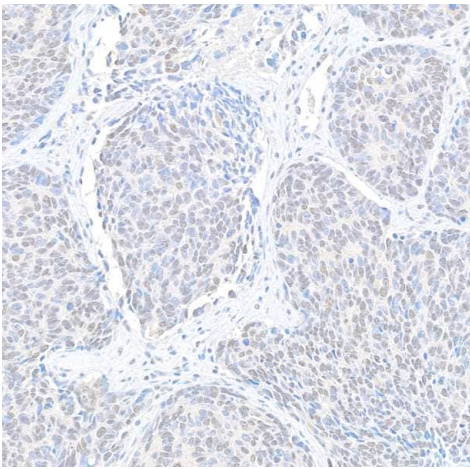
Lysates/proteins at 50 µg per lane.

Predicted band size: 66 kDa

Exposure time: 75 seconds

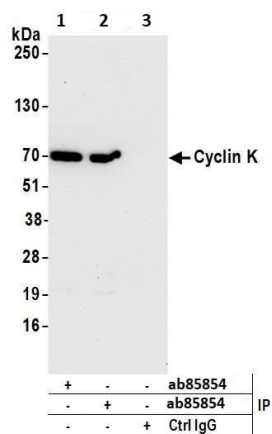
Detection: Chemiluminescence

Cells prepared using NETN lysis buffer



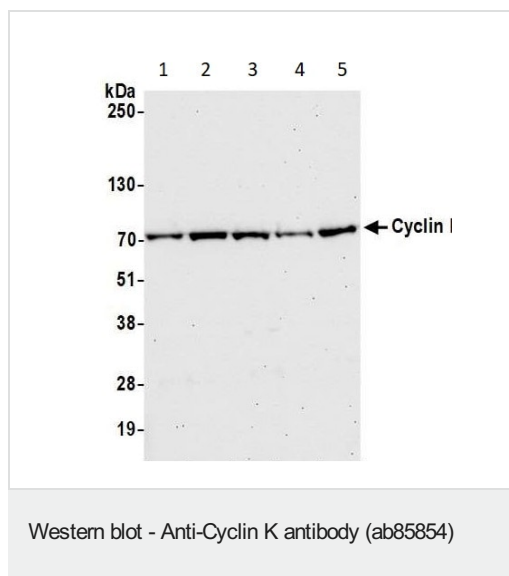
Immunohistochemical analysis of Formalin/PFA-fixed paraffin-embedded human lung carcinoma sections labeling Cyclin K with ab85854 at a dilution of 1/5000 (0.2 µg/mL). Detection: DAB

Immunohistochemistry (Formalin/PFA-fixed paraffin-embedded sections) - Anti-Cyclin K antibody (ab85854)



Detection of human Cyclin K by western blot of immunoprecipitates. Samples: Whole cell lysate (1.0 mg per IP reaction; 20% of IP loaded) from HEK293T cells prepared using NETN lysis buffer. Antibodies: Affinity purified rabbit anti-Cyclin K antibody ab85854 used for IP at 6 µg per reaction. Cyclin K was also immunoprecipitated by a previous lot of this antibody. For blotting immunoprecipitated Cyclin K, ab85854 was used at 0.04 µg/mL. Detection: Chemiluminescence with an exposure time of 10 seconds.

Immunoprecipitation - Anti-Cyclin K antibody (ab85854)



All lanes : Anti-Cyclin K antibody (ab85854) at 0.04 µg/ml

Lane 1 : NIH3T3 whole cell lysate

Lane 2 : CH27 whole cell lysate

Lane 3 : TCMK-1 whole cell lysate

Lane 4 : BW5147.3 whole cell lysate

Lane 5 : CT26 whole cell lysate

Lysates/proteins at 50 µg per lane.

Predicted band size: 66 kDa

Exposure time: 30 seconds

Detection: Chemiluminescence

Cells prepared using NETN lysis buffer

Please note: All products are "FOR RESEARCH USE ONLY. NOT FOR USE IN DIAGNOSTIC PROCEDURES"

Our Abpromise to you: Quality guaranteed and expert technical support

- Replacement or refund for products not performing as stated on the datasheet
- Valid for 12 months from date of delivery
- Response to your inquiry within 24 hours
- We provide support in Chinese, English, French, German, Japanese and Spanish
- Extensive multi-media technical resources to help you
- We investigate all quality concerns to ensure our products perform to the highest standards

If the product does not perform as described on this datasheet, we will offer a refund or replacement. For full details of the Abpromise, please visit <https://www.abcam.co.jp/abpromise> or contact our technical team.

Terms and conditions

-
- Guarantee only valid for products bought direct from Abcam or one of our authorized distributors