

Anti-Cyclin E2 antibody [E142] ab32103

リコンビナント **RabMAb**

★★★★☆ **5 Abreviews** **24 References** 画像数 7

製品の概要

製品名	Anti-Cyclin E2 antibody [E142]
製品の詳細	Rabbit monoclonal [E142] to Cyclin E2
由来種	Rabbit
アプリケーション	適用あり: WB, ICC/IF
種交差性	交差種: Mouse, Human
免疫原	Synthetic peptide within Human Cyclin E2 aa 350 to the C-terminus (C terminal). The exact sequence is proprietary. Database link: O96020
ポジティブ・コントロール	Human breast carcinoma, HeLa cells lysates, Jurkat whole cell lysate (ab7899)
特記事項	<p>This product is a recombinant monoclonal antibody, which offers several advantages including:</p> <ul style="list-style-type: none"> - High batch-to-batch consistency and reproducibility - Improved sensitivity and specificity - Long-term security of supply - Animal-free production <p>For more information see here.</p> <p>Our RabMAb[®] technology is a patented hybridoma-based technology for making rabbit monoclonal antibodies. For details on our patents, please refer to RabMAb[®] patents.</p> <p>Rat: We have preliminary internal testing data to indicate this antibody may not react with this species. Please contact us for more information.</p>

製品の特性

製品の状態	Liquid
保存方法	Shipped at 4°C. Upon delivery aliquot and store at -20°C. Avoid freeze / thaw cycles.
バッファー	pH: 7.20 Preservative: 0.01% Sodium azide Constituents: 59% PBS, 40% Glycerol (glycerin, glycerine), 0.05% BSA
精製度	Protein A purified
ポリ/モノ	モノクローナル

クローン名 E142
アイソタイプ IgG

アプリケーション

The Abpromise guarantee Abpromise保証は、次のテスト済みアプリケーションにおけるab32103の使用に適用されます
アプリケーションノートには、推奨の開始希釈率がありますが、適切な希釈率につきましてはご確認ください。

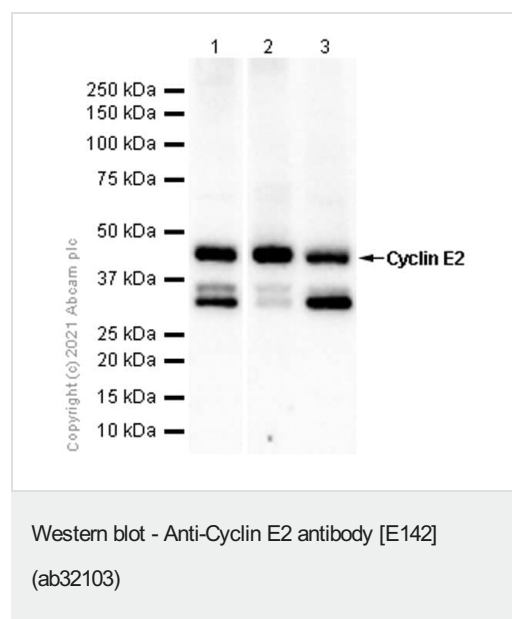
アプリケーション	Abreviews	特記事項
WB	★★★★☆ (4)	1/200. Predicted molecular weight: 45 kDa. For unpurified version use at 1/500
ICC/IF	★★★★★ (1)	1/50. For unpurified use at 1/100 - 1/250

ターゲット情報

関連性 The human Cyclin E2 gene encodes a 404 amino acid protein that is most closely related to Cyclin E. Cyclin E2 mRNA levels peaks at the G1 / S transition. Cyclin E2 associates with Cdk2 in a functional kinase complex that is inhibited by both p27 (Kip1) and p21 (Cip1). Cyclin E2 / Cdk2 phosphorylates histone H1 in vitro. G1 cyclin E controls the initiation of DNA synthesis by activating CDK2. Abnormally high levels of cyclin E expression have frequently been observed in human cancers. Unlike Cyclin E1, which is expressed in great majority of proliferating normal and neoplastically transformed cells, Cyclin E2 levels are low to undetectable in non transformed cells and increase significantly in neoplasm derived cells.

細胞内局在 Nuclear

画像



All lanes : Anti-Cyclin E2 antibody [E142] (ab32103) at 1/200 dilution (Purified)

Lane 1 : HeLa (Human cervix adenocarcinoma epithelial cell) whole cell lysate

Lane 2 : Mouse testis lysate

Lane 3 : Mouse thymus lysate

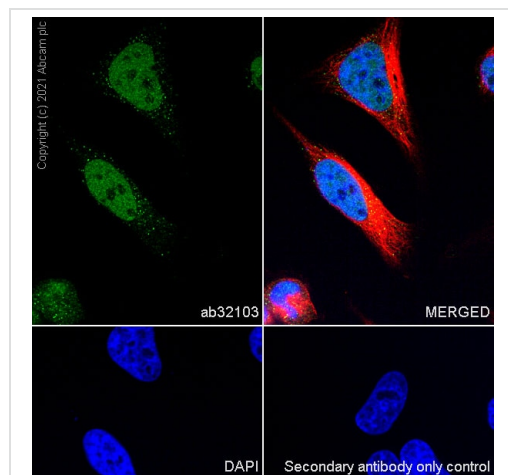
Lysates/proteins at 20 µg per lane.

Secondary

All lanes : Goat Anti-Rabbit IgG H&L (HRP) (**ab97051**) at 1/20000 dilution

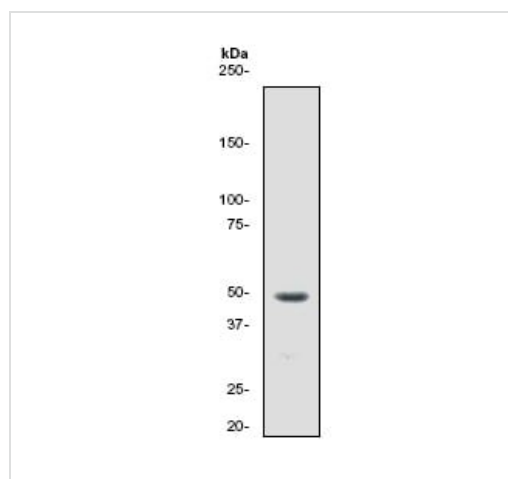
Predicted band size: 45 kDa

Observed band size: 45 kDa



Immunocytochemistry/ Immunofluorescence - Anti-Cyclin E2 antibody [E142] (ab32103)

Immunocytochemistry analysis of HeLa (Human cervix adenocarcinoma epithelial cell) cells labeling Cyclin E2 with purified ab32103 at 1/50 dilution (5.2 µg/mL). Cells were fixed in 4% Paraformaldehyde and permeabilized with 0.1% tritonX-100. Cells were counterstained with **ab195889** Anti-alpha Tubulin antibody [DM1A] - Microtubule Marker (Alexa Fluor® 594) 1/200 (2.5 µg/mL). Goat anti rabbit IgG (Alexa Fluor® 488, **ab150077**) was used as the secondary antibody at 1/1000 (2 µg/mL) dilution. DAPI (blue) was used as nuclear counterstain. PBS instead of the primary antibody was used as the secondary antibody only control.

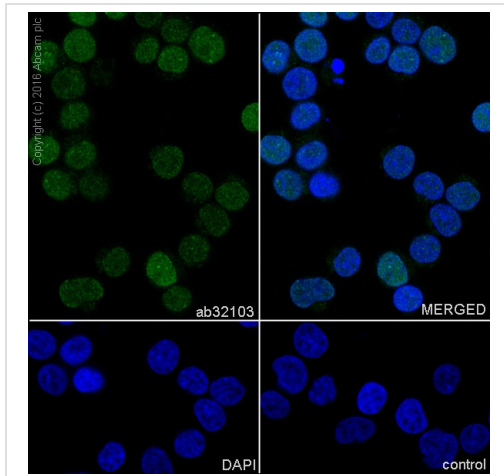


Western blot - Anti-Cyclin E2 antibody [E142] (ab32103)

Anti-Cyclin E2 antibody [E142] (ab32103) at 1/500 dilution + HeLa cell lysate

Predicted band size: 45 kDa

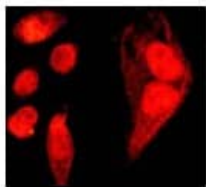
Observed band size: 50 kDa



Immunocytochemistry/ Immunofluorescence - Anti-Cyclin E2 antibody [E142] (ab32103)

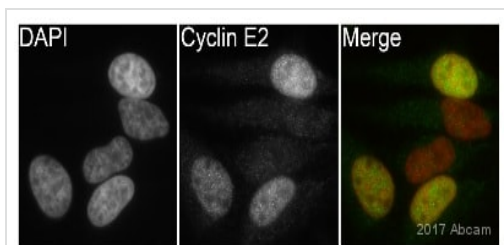
Immunocytochemistry/Immunofluorescence analysis of Jurkat cells labelling Cyclin E2 with purified ab32103 at 1/2000. Cells were fixed with 4% Paraformaldehyde and permeabilised with 0.1% tritonX-100. An Alexa Fluor® 488-conjugated goat anti-rabbit IgG (**ab150077**) at 1/1000 dilution was used as the secondary antibody. Nuclei counterstained with DAPI (blue).

Secondary Only Control: PBS was used instead of the primary antibody as the negative control.



Immunocytochemistry/ Immunofluorescence - Anti-Cyclin E2 antibody [E142] (ab32103)

Immunofluorescent analysis of Cyclin E2 expression in HeLa cell culture using 1/100 ab32103.



Immunocytochemistry/ Immunofluorescence - Anti-Cyclin E2 antibody [E142] (ab32103)

This image is courtesy of an abreview by Kirk Mcmanus

ab32103 staining Cyclin E2 in the Hela cell line from Human cervix by ICC/IF (Immunocytochemistry/immunofluorescence). Cells were fixed with paraformaldehyde, permeabilized with 0.5% Triton X-100. Samples were incubated with primary antibody (1/500 in PBS) for 1 hour at 22°C. Ab150081 (1/200) was used as the secondary antibody.

Why choose a recombinant antibody?



Research with confidence
Consistent and reproducible results



Long-term and scalable supply
Recombinant technology



Success from the first experiment
Confirmed specificity



Ethical standards compliant
Animal-free production

Anti-Cyclin E2 antibody [E142] (ab32103)

Please note: All products are "FOR RESEARCH USE ONLY. NOT FOR USE IN DIAGNOSTIC PROCEDURES"

Our Abpromise to you: Quality guaranteed and expert technical support

- Replacement or refund for products not performing as stated on the datasheet
- Valid for 12 months from date of delivery
- Response to your inquiry within 24 hours
- We provide support in Chinese, English, French, German, Japanese and Spanish
- Extensive multi-media technical resources to help you
- We investigate all quality concerns to ensure our products perform to the highest standards

If the product does not perform as described on this datasheet, we will offer a refund or replacement. For full details of the Abpromise, please visit <https://www.abcam.co.jp/abpromise> or contact our technical team.

Terms and conditions

- Guarantee only valid for products bought direct from Abcam or one of our authorized distributors