

Anti-Cyclin E1 antibody ab71535

★★★★☆ [2 Abreviews](#) [25 References](#) [画像数 1](#)

製品の概要

製品名	Anti-Cyclin E1 antibody
製品の詳細	Rabbit polyclonal to Cyclin E1
由来種	Rabbit
アプリケーション	適用あり: WB
種交差性	交差種: Mouse, Rat, Human
免疫原	Recombinant full length protein corresponding to Human Cyclin E1.
特記事項	<p>The Life Science industry has been in the grips of a reproducibility crisis for a number of years. Abcam is leading the way in addressing this with our range of recombinant monoclonal antibodies and knockout edited cell lines for gold-standard validation. Please check that this product meets your needs before purchasing.</p> <p>If you have any questions, special requirements or concerns, please send us an inquiry and/or contact our Support team ahead of purchase. Recommended alternatives for this product can be found below, along with publications, customer reviews and Q&As</p>

製品の特性

製品の状態	Liquid
保存方法	Shipped at 4°C. Store at -20°C. Stable for 12 months at -20°C.
バッファー	Preservative: 0.03% Sodium azide Constituents: 0.01% BSA, 50% Glycerol (glycerin, glycerine), 0.87% Sodium chloride, HEPES
精製度	IgG fraction
ポリ/モノ	ポリクローナル
アイソタイプ	IgG

アプリケーション

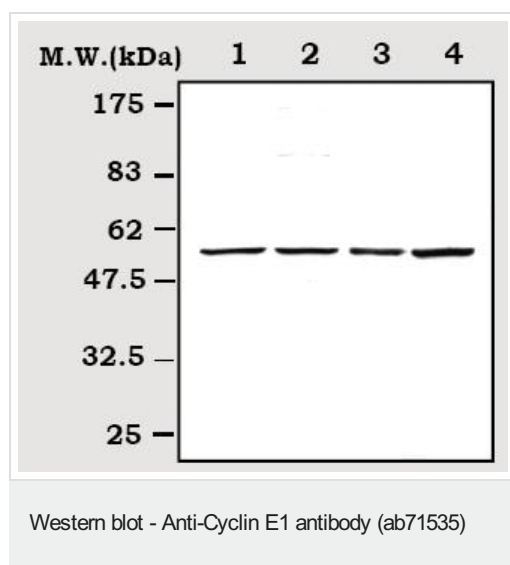
The Abpromise guarantee **Abpromise保証は、** 次のテスト済みアプリケーションにおけるab71535の使用に適用されます
アプリケーションノートには、推奨の開始希釈率がありますが、適切な希釈率につきましてはご検討ください。

アプリケーション	Abreviews	特記事項
WB	★★★★☆ (1)	1/2000. Detects a band of approximately 55 kDa (predicted molecular weight: 47 kDa).

ターゲット情報

機能	Essential for the control of the cell cycle at the G1/S (start) transition.
組織特異性	Highly expressed in testis and placenta. Low levels in bronchial epithelial cells.
配列類似性	Belongs to the cyclin family. Cyclin E subfamily.
翻訳後修飾	Phosphorylation of Thr-395 by GSK3 and of Ser-399 by CDK2 accelerates degradation via the ubiquitin proteasome pathway. Phosphorylated upon DNA damage, probably by ATM or ATR.
細胞内局在	Nucleus.

画像



All lanes : Anti-Cyclin E1 antibody (ab71535) at 1/2000 dilution

Lane 1 : HepG2 cell lysate

Lane 2 : K562 cell lysate

Lane 3 : Mouse liver lysate

Lane 4 : Rat liver lysate

Predicted band size: 47 kDa

Observed band size: 55 kDa

Please note: All products are "FOR RESEARCH USE ONLY. NOT FOR USE IN DIAGNOSTIC PROCEDURES"

Our Abpromise to you: Quality guaranteed and expert technical support

- Replacement or refund for products not performing as stated on the datasheet
- Valid for 12 months from date of delivery
- Response to your inquiry within 24 hours
- We provide support in Chinese, English, French, German, Japanese and Spanish
- Extensive multi-media technical resources to help you
- We investigate all quality concerns to ensure our products perform to the highest standards

If the product does not perform as described on this datasheet, we will offer a refund or replacement. For full details of the Abpromise,

please visit <https://www.abcam.co.jp/abpromise> or contact our technical team.

Terms and conditions

- Guarantee only valid for products bought direct from Abcam or one of our authorized distributors