

### Anti-Cyclin C antibody ab85927

[6 References](#) [画像数 3](#)

#### 製品の概要

---

製品名	Anti-Cyclin C antibody
製品の詳細	Rabbit polyclonal to Cyclin C
由来種	Rabbit
アプリケーション	<b>適用あり:</b> WB, IP, IHC-P
種交差性	<b>交差種:</b> Human <b>交差が予測される動物種:</b> Mouse, Rat, Rabbit, Horse, Chicken, Guinea pig, Cow, Dog, Turkey, Pig, Chimpanzee, Rhesus monkey, Gorilla, Orangutan, Platypus 
免疫原	Synthetic peptide corresponding to Human Cyclin C aa 233-283. Database link: <a href="#">P24863</a>
ポジティブ・コントロール	Panc1, 293T, Jurkat, H2009 and HeLa whole cell lysate ( <a href="#">ab150035</a> ).
特記事項	<p>The Life Science industry has been in the grips of a reproducibility crisis for a number of years. Abcam is leading the way in addressing this with our range of recombinant monoclonal antibodies and knockout edited cell lines for gold-standard validation. Please check that this product meets your needs before purchasing.</p> <p>If you have any questions, special requirements or concerns, please send us an inquiry and/or contact our Support team ahead of purchase. Recommended alternatives for this product can be found below, along with publications, customer reviews and Q&amp;As</p>

#### 製品の特性

---

製品の状態	Liquid
保存方法	Shipped at 4°C. Upon delivery aliquot and store at -20°C. Avoid freeze / thaw cycles.
バッファー	pH: 7 Preservative: 0.09% Sodium azide Constituent: Tris citrate/phosphate
精製度	Immunogen affinity purified
ポリ/モノ	ポリクローナル
アイソタイプ	IgG

#### アプリケーション

## The Abpromise guarantee

**Abpromise保証は、次のテスト済みアプリケーションにおけるab85927の使用に適用されます**

アプリケーションノートには、推奨の開始希釈率がありますが、適切な希釈率につきましてはご検討ください。

アプリケーション	Abreviews	特記事項
WB		1/2000 - 1/10000. Detects a band of approximately 33 kDa (predicted molecular weight: 33 kDa).
IP		Use at 2-5 µg/mg of lysate.
IHC-P		1/1000 - 1/5000. Perform heat mediated antigen retrieval before commencing with IHC staining protocol.

## ターゲット情報

### 機能

Component of the Mediator complex, a coactivator involved in regulated gene transcription of nearly all RNA polymerase II-dependent genes. Mediator functions as a bridge to convey information from gene-specific regulatory proteins to the basal RNA polymerase II transcription machinery. Mediator is recruited to promoters by direct interactions with regulatory proteins and serves as a scaffold for the assembly of a functional preinitiation complex with RNA polymerase II and the general transcription factors. Binds to and activates cyclin-dependent kinase CDK8 that phosphorylates the CTD (C-terminal domain) of the large subunit of RNA polymerase II (RNAP II), which may inhibit the formation of a transcription initiation complex.

### 組織特異性

Highest levels in pancreas. High levels in heart, liver, skeletal muscle and kidney. Low levels in brain.

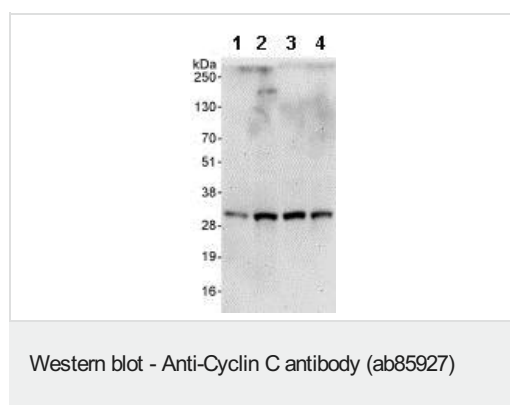
### 配列類似性

Belongs to the cyclin family. Cyclin C subfamily.  
Contains 1 cyclin N-terminal domain.

### 細胞内局在

Nucleus.

## 画像



**All lanes :** Anti-Cyclin C antibody (ab85927) at 0.1 µg/ml

**Lane 1 :** Panc1 whole cell lysate

**Lane 2 :** 293T whole cell lysate

**Lane 3 :** Jurkat whole cell lysate

**Lane 4 :** H2009 whole cell lysate

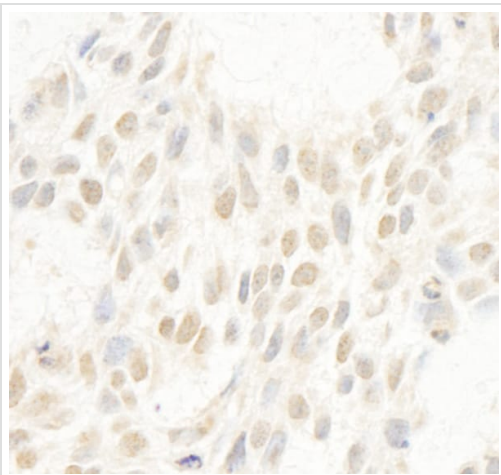
Lysates/proteins at 50 µg per lane.

Developed using the ECL technique.

**Predicted band size:** 33 kDa

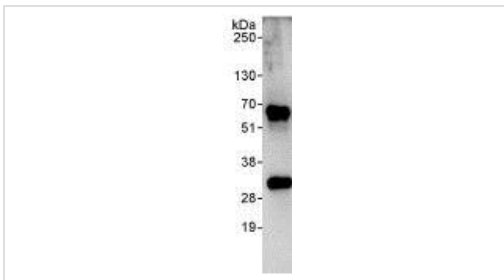
**Observed band size:** 33 kDa

**Exposure time:** 3 minutes



Immunohistochemistry (Formalin/PFA-fixed paraffin-embedded sections) analysis of human breast carcinoma tissue labelling Cyclin C with ab85927 at 1/1000 (1 µg/ml). Detection: DAB.

Immunohistochemistry (Formalin/PFA-fixed paraffin-embedded sections) - Anti-Cyclin C antibody (ab85927)



Detection of Human Cyclin C in Immunoprecipitates of Whole cell lysate from HeLa cells (1 mg for IP, 20% of IP loaded) using ab85927 at 3 µg/mg lysate for IP and at 1 µg/ml for subsequent Western blot detection. Detection: Chemiluminescence with an exposure time of 30 seconds.

Immunoprecipitation - Anti-Cyclin C antibody (ab85927)

**Please note:** All products are "FOR RESEARCH USE ONLY. NOT FOR USE IN DIAGNOSTIC PROCEDURES"

### Our Abpromise to you: Quality guaranteed and expert technical support

- Replacement or refund for products not performing as stated on the datasheet
- Valid for 12 months from date of delivery
- Response to your inquiry within 24 hours
- We provide support in Chinese, English, French, German, Japanese and Spanish
- Extensive multi-media technical resources to help you
- We investigate all quality concerns to ensure our products perform to the highest standards

If the product does not perform as described on this datasheet, we will offer a refund or replacement. For full details of the Abpromise, please visit <https://www.abcam.co.jp/abpromise> or contact our technical team.

## Terms and conditions

---

- Guarantee only valid for products bought direct from Abcam or one of our authorized distributors