

Anti-Cyclin B1 (phospho S126) antibody ab55184

8 References [画像数 2](#)

製品の概要

製品名	Anti-Cyclin B1 (phospho S126) antibody
製品の詳細	Rabbit polyclonal to Cyclin B1 (phospho S126)
由来種	Rabbit
アプリケーション	適用あり: WB, IHC-P
種交差性	交差種: Mouse, Human
免疫原	Synthetic peptide corresponding to Human Cyclin B1 (phospho S126). Synthetic phosphopeptide derived from human Cyclin B1 around the phosphorylation site of serine 126 (T-A-SP-P-S). Database link: P14635

特記事項

The Life Science industry has been in the grips of a reproducibility crisis for a number of years. Abcam is leading the way in addressing this with our range of recombinant monoclonal antibodies and knockout edited cell lines for gold-standard validation. Please check that this product meets your needs before purchasing.

If you have any questions, special requirements or concerns, please send us an inquiry and/or contact our Support team ahead of purchase. Recommended alternatives for this product can be found below, along with publications, customer reviews and Q&As

製品の特性

製品の状態	Liquid
保存方法	Shipped at 4°C. Store at -20°C. Stable for 12 months at -20°C.
バッファー	pH: 7.40 Preservative: 0.02% Sodium azide Constituents: 50% Glycerol (glycerin, glycerine), 0.87% Sodium chloride, PBS
精製度	Immunogen affinity purified
特記事項 (精製)	The antibody against non-phosphopeptide was removed by chromatography using non-phosphopeptide corresponding to the phosphorylation site.
ポリモノ	ポリクローナル
アイソタイプ	IgG

アプリケーション

The Abpromise guarantee

Abpromise保証は、次のテスト済みアプリケーションにおけるab55184の使用に適用されます

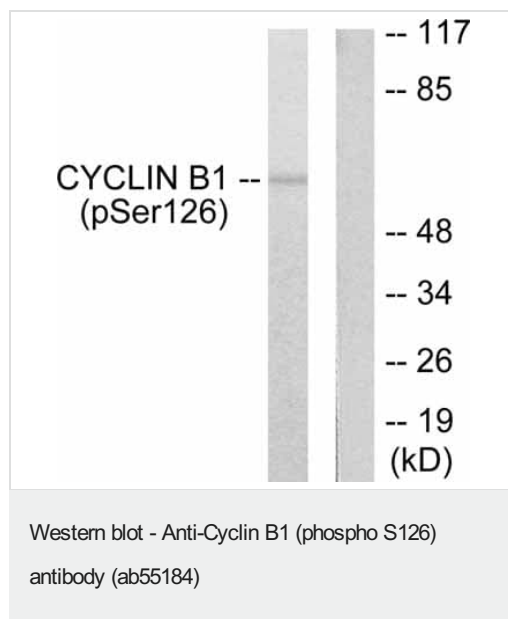
アプリケーションノートには、推奨の開始希釈率がありますが、適切な希釈率につきましてはご検討ください。

アプリケーション	Abreviews	特記事項
WB		1/500 - 1/1000. Detects a band of approximately 65 kDa (predicted molecular weight: 48 kDa).
IHC-P		1/50 - 1/100.

ターゲット情報

機能	Essential for the control of the cell cycle at the G2/M (mitosis) transition.
配列類似性	Belongs to the cyclin family. Cyclin AB subfamily.
発生段階	Accumulates steadily during G2 and is abruptly destroyed at mitosis.
翻訳後修飾	Ubiquitinated by the SCF(NIPA) complex during interphase, leading to its destruction. Not ubiquitinated during G2/M phases.
細胞内局在	Cytoplasm. Nucleus. Cytoplasm > cytoskeleton > centrosome.

画像



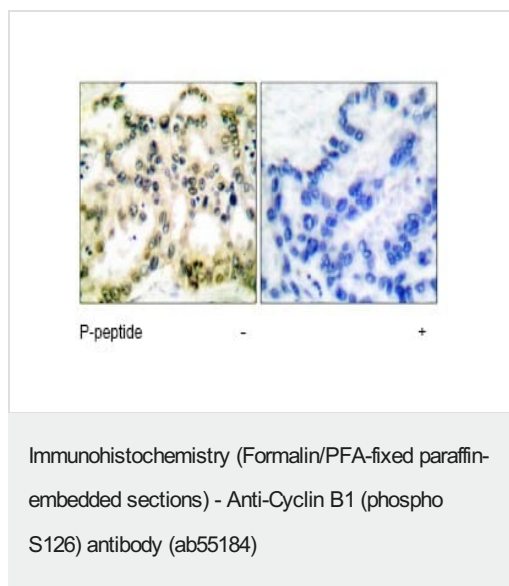
All lanes : Anti-Cyclin B1 (phospho S126) antibody (ab55184) at 1/500 dilution

Lane 1 : extracts from NIH/3T3 cells treated with EGF (200ng/ml, 15mins).

Lane 2 : extracts from NIH/3T3 cells treated with EGF (200ng/ml, 15mins); **ab36621** pre-incubated with the immunising phosphopeptide.

Predicted band size: 48 kDa

Observed band size: 65 kDa



Immunohistochemical analysis of Cyclin B1 (phospho S126) expression in paraffin embedded human lung carcinoma tissue using ab55184 at 1/50 dilution (left). Right hand panel represents a negative control where ab55184 was pre-incubated with the immunising (blocking) phosphopeptide.

Please note: All products are "FOR RESEARCH USE ONLY. NOT FOR USE IN DIAGNOSTIC PROCEDURES"

Our Abpromise to you: Quality guaranteed and expert technical support

- Replacement or refund for products not performing as stated on the datasheet
- Valid for 12 months from date of delivery
- Response to your inquiry within 24 hours
- We provide support in Chinese, English, French, German, Japanese and Spanish
- Extensive multi-media technical resources to help you
- We investigate all quality concerns to ensure our products perform to the highest standards

If the product does not perform as described on this datasheet, we will offer a refund or replacement. For full details of the Abpromise, please visit <https://www.abcam.co.jp/abpromise> or contact our technical team.

Terms and conditions

- Guarantee only valid for products bought direct from Abcam or one of our authorized distributors