

Anti-Cyclin B1 antibody [Y106] ab32053

KO 評価済 リコンビナント RabMAb

★★★★★ [4 Abreviews](#) [165 References](#) [画像数 11](#)

製品の概要

製品名	Anti-Cyclin B1 antibody [Y106]
製品の詳細	Rabbit monoclonal [Y106] to Cyclin B1
由来種	Rabbit
特異性	This antibody is specific for Human cyclin B1. It does not cross-react with other cyclin family members.
アプリケーション	適用あり: Flow Cyt (Intra), ICC/IF, WB, IHC-P, IP
種交差性	交差種: Human
免疫原	Synthetic peptide. This information is proprietary to Abcam and/or its suppliers.
エピトープ	ab32053 reacts with an epitope located in teh C terminal region of Cyclin B1.
ポジティブ・コントロール	Jurkat and HeLa whole cell lysate (ab150035).
特記事項	<p>This product is a recombinant monoclonal antibody, which offers several advantages including:</p> <ul style="list-style-type: none"> - High batch-to-batch consistency and reproducibility - Improved sensitivity and specificity - Long-term security of supply - Animal-free production <p>For more information see here.</p> <p>Our RabMAb[®] technology is a patented hybridoma-based technology for making rabbit monoclonal antibodies. For details on our patents, please refer to RabMAb[®] patents.</p> <p>Mouse, Rat: We have preliminary internal testing data to indicate this antibody may not react with these species. Please contact us for more information.</p>

製品の特性

製品の状態	Liquid
保存方法	Shipped at 4°C. Store at +4°C short term (1-2 weeks). Upon delivery aliquot. Store at -20°C. Avoid freeze / thaw cycle.
バッファー	<p>pH: 7.20</p> <p>Preservative: 0.01% Sodium azide</p> <p>Constituents: 59% PBS, 40% Glycerol, 0.05% BSA</p>

精製度	Protein A purified
ポリ/モノ	モノクローナル
クローン名	Y106
アイソタイプ	IgG

アプリケーション

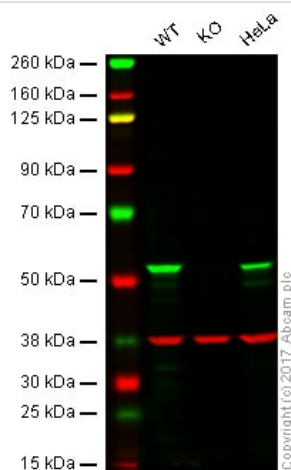
The Abpromise guarantee Abpromise保証は、次のテスト済みアプリケーションにおけるab32053の使用に適用されます
アプリケーションノートには、推奨の開始希釈率がありますが、適切な希釈率につきましてはご検討ください。

アプリケーション	Abreviews	特記事項
Flow Cyt (Intra)		1/400. ab172730 - Rabbit monoclonal IgG, is suitable for use as an isotype control with this antibody. For unpurified use at 1/20.
ICC/IF	★★★★★ (1)	1/100. For unpurified use at 1/50.
WB	★★★★★ (2)	1/50000. Predicted molecular weight: 58 kDa. For unpurified use at 1/3000 - 1/20000.
IHC-P	★★★★★ (1)	1/250. Perform heat mediated antigen retrieval with Tris/EDTA buffer pH 9.0 before commencing with IHC staining protocol.
IP		1/20. For unpurified use at 1/100.

ターゲット情報

機能	Essential for the control of the cell cycle at the G2/M (mitosis) transition.
配列類似性	Belongs to the cyclin family. Cyclin AB subfamily.
発生段階	Accumulates steadily during G2 and is abruptly destroyed at mitosis.
翻訳後修飾	Ubiquitinated by the SCF(NIPA) complex during interphase, leading to its destruction. Not ubiquitinated during G2/M phases.
細胞内局在	Cytoplasm. Nucleus. Cytoplasm > cytoskeleton > centrosome.

画像



Western blot - Anti-Cyclin B1 antibody [Y106]
(ab32053)

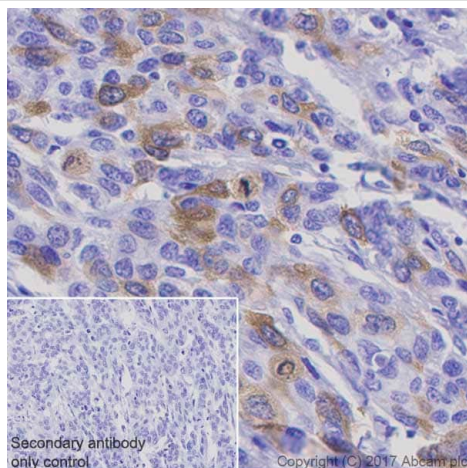
Lane 1: Wild-type HAP1 whole cell lysate (20 µg)

Lane 2: CCNB1 knockout HAP1 whole cell lysate (20 µg)

Lane 3: HeLa whole cell lysate (20 µg)

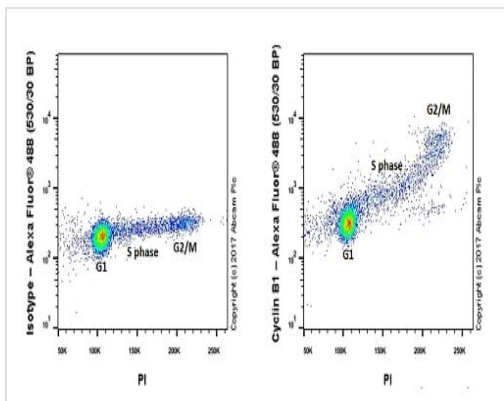
Lanes 1 - 3: Merged signal (red and green). Green - ab32053 observed at 55 kDa. Red - loading control, **ab8245**, observed at 37 kDa.

Unpurified ab32053 was shown to specifically react with CCNB1 in wild-type HAP1 cells. No band was observed when CCNB1 knockout samples were examined. Wild-type and CCNB1 knockout samples were subjected to SDS-PAGE. Ab32053 and **ab8245** (Mouse anti GAPDH loading control) were incubated overnight at 4°C at 1/3000 dilution and 1/10,000 dilution respectively. Blots were developed with Goat anti-Rabbit IgG H&L (IRDye® 800CW) preabsorbed **ab216773** and Goat anti-Mouse IgG H&L (IRDye® 680RD) preabsorbed **ab216776** secondary antibodies at 1/10,000 dilution for 1 hour at room temperature before imaging.

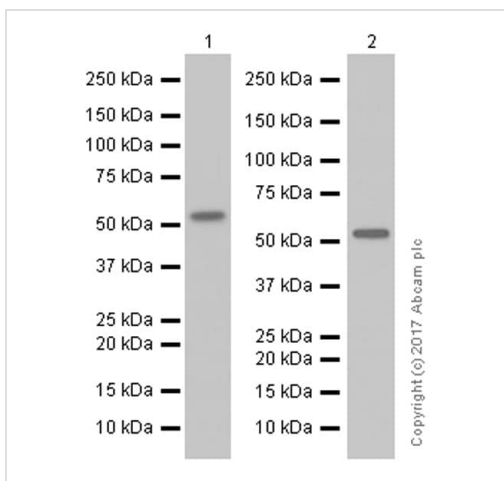


Immunohistochemistry (Formalin/PFA-fixed paraffin-embedded sections) - Anti-Cyclin B1 antibody [Y106] (ab32053)

Immunohistochemistry (Formalin/PFA-fixed paraffin-embedded sections) analysis of Human cervical carcinoma tissue sections labeling Cyclin B1 with Purified ab32053 at 1:250 dilution (1.47 µg/ml). Heat mediated antigen retrieval was performed using **ab93684** (Tris/EDTA buffer, pH 9.0). Tissue was counterstained with Hematoxylin. ImmunoHistoProbe one step HRP Polymer (ready to use) secondary antibody was used at 1:0 dilution. PBS instead of the primary antibody was used as the negative control.



Flow Cytometry (Intracellular) - Anti-Cyclin B1 antibody [Y106] (ab32053)



Western blot - Anti-Cyclin B1 antibody [Y106] (ab32053)

Intracellular Flow Cytometry analysis of HeLa (Human cervix adenocarcinoma epithelial cell) cells labeling Cyclin B1 with purified ab32053 at 1/400 dilution (1µg/ml) (Right). Cells were fixed with 80% Methanol and permeabilised with 0.1% Tween-20. A Goat anti rabbit IgG (Alexa Fluor® 488) secondary antibody was used at 1/2000 dilution. Isotype control - Rabbit monoclonal IgG (Left). Cells were pre-treated with 20µg/ml RNaseA for 30min to minimize the binding between PI and RNA. Then intracellular stained with ab32053 and PI.

All lanes : Anti-Cyclin B1 antibody [Y106] (ab32053) at 1/50000 dilution (purified)

Lane 1 : HeLa (Human cervix adenocarcinoma epithelial cell) whole cell lysates

Lane 2 : HEK-293 (Human embryonic kidney epithelial cell) whole cell lysates

Lysates/proteins at 15 µg per lane.

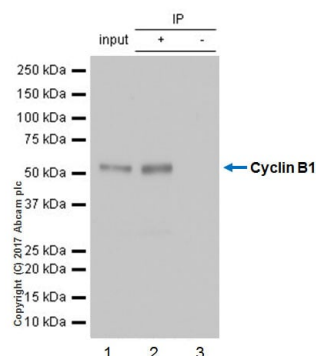
Secondary

All lanes : Goat Anti-Rabbit IgG H&L (HRP) ([ab97051](#)) at 1/20000 dilution

Predicted band size: 58 kDa

Observed band size: 58 kDa

Blocking and diluting buffer: 5% NFDM/TBST



Immunoprecipitation - Anti-Cyclin B1 antibody
[Y106] (ab32053)

ab32053 (purified) at 1:20 dilution (2µg) immunoprecipitating Cyclin B1 in Jurkat (Human T cell leukemia T lymphocyte) whole cell lysate.

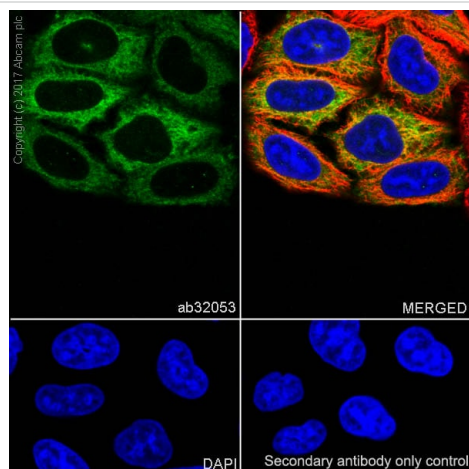
Lane 1 (input): Jurkat (Human T cell leukemia T lymphocyte) whole cell lysate 10µg

Lane 2 (+): ab32053 & Jurkat (Human T cell leukemia T lymphocyte) whole cell lysate

Lane 3 (-): Rabbit monoclonal IgG (**ab172730**) instead of ab32053 in Jurkat (Human T cell leukemia T lymphocyte) whole cell lysate

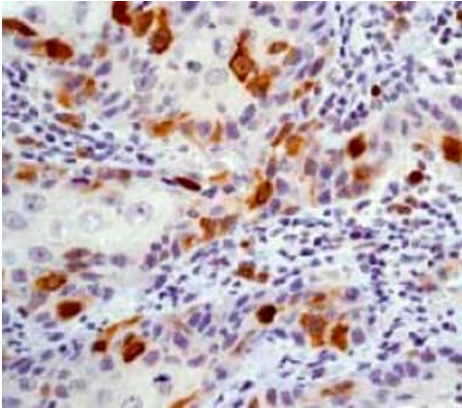
For western blotting, VeriBlot for IP Detection Reagent (HRP) (**ab131366**) was used for detection at 1:1000 dilution.

Blocking and diluting buffer: 5% NFDM/TBST.



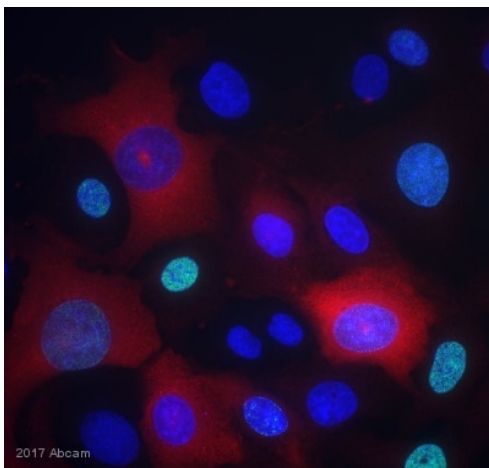
Immunocytochemistry/ Immunofluorescence - Anti-Cyclin B1 antibody [Y106] (ab32053)

Immunocytochemistry/ Immunofluorescence analysis of HeLa (Human cervix adenocarcinoma epithelial cell) cells labeling Cyclin B1 with Purified ab32053 at 1:100 dilution. Cells were fixed in 100% Methanol. **ab150077** Goat anti rabbit IgG(Alexa Fluor® 488) was used as the secondary antibody at 1:1000 dilution. DAPI nuclear counterstain. PBS instead of the primary antibody was used as the secondary antibody only control.



Unpurified ab32053 at a 1:100 dilution staining Human cyclin B1 in human skin carcinoma, using Immunohistochemistry, Paraffin Embedded Tissue.

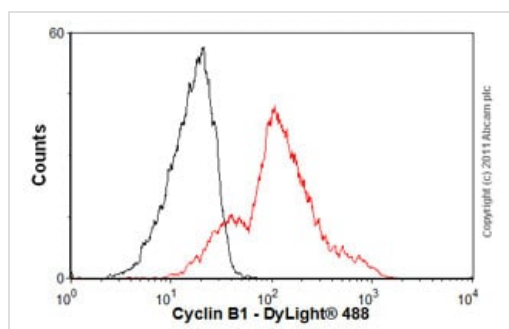
Immunohistochemistry (Formalin/PFA-fixed paraffin-embedded sections) - Anti-Cyclin B1 antibody [Y106] (ab32053)



Unpurified ab32053 staining Cyclin B1 in the U2OS cell line from human by ICC/IF (Immunocytochemistry/immunofluorescence). Cells were fixed with formaldehyde, permeabilized with 1% Triton X-100 in PBS and blocked with 1% BSA for 1 hour at 37°C. Alexa Fluor® 594-conjugated goat anti-rabbit IgG polyclonal was used as the secondary antibody.

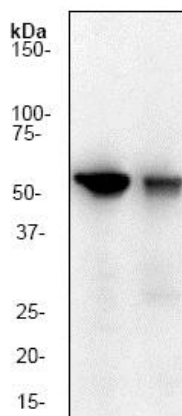
Immunocytochemistry/ Immunofluorescence - Anti-Cyclin B1 antibody [Y106] (ab32053)

This image is courtesy of an Abreview submitted by Stephanie Hilss



Flow Cytometry (Intracellular) - Anti-Cyclin B1 antibody [Y106] (ab32053)

Overlay histogram showing Jurkat cells stained with unpurified ab32053 (red line). The cells were fixed with 80% methanol (5 min) and then permeabilized with 0.1% PBS-Tween for 20 min. The cells were then incubated in 1x PBS / 10% normal goat serum / 0.3M glycine to block non-specific protein-protein interactions followed by the antibody (ab32053, 1/20 dilution) for 30 min at 22°C. The secondary antibody used was DyLight® 488 goat anti-rabbit IgG (H+L) ([ab96899](#)) at 1/500 dilution for 30 min at 22°C. Isotype control antibody (black line) was rabbit IgG (monoclonal) (1 µg/1x10⁶ cells) used under the same conditions. Acquisition of >5,000 events was performed.



Western blot - Anti-Cyclin B1 antibody [Y106] (ab32053)





All lanes : Anti-Cyclin B1 antibody [Y106] (ab32053) at 1/20000 dilution (unpurified)

Lane 1 : Hela cell lysate.

Lane 2 : Jurkat cell lysate.

Predicted band size: 58 kDa

Why choose a recombinant antibody?

 <p>Research with confidence Consistent and reproducible results</p>	 <p>Long-term and scalable supply Recombinant technology</p>
 <p>Success from the first experiment Confirmed specificity</p>	 <p>Ethical standards compliant Animal-free production</p>

Anti-Cyclin B1 antibody [Y106] (ab32053)

Please note: All products are "FOR RESEARCH USE ONLY. NOT FOR USE IN DIAGNOSTIC PROCEDURES"

Our Abpromise to you: Quality guaranteed and expert technical support

- Replacement or refund for products not performing as stated on the datasheet
- Valid for 12 months from date of delivery
- Response to your inquiry within 24 hours
- We provide support in Chinese, English, French, German, Japanese and Spanish
- Extensive multi-media technical resources to help you
- We investigate all quality concerns to ensure our products perform to the highest standards

If the product does not perform as described on this datasheet, we will offer a refund or replacement. For full details of the Abpromise, please visit <https://www.abcam.co.jp/abpromise> or contact our technical team.

Terms and conditions

- Guarantee only valid for products bought direct from Abcam or one of our authorized distributors