

### Anti-Cyclin A2 antibody [E399] ab32498

リコンビナント **RabMAb**

**9 References**   **画像数 5**

#### 製品の概要

製品名	Anti-Cyclin A2 antibody [E399]
製品の詳細	Rabbit monoclonal [E399] to Cyclin A2
由来種	Rabbit
アプリケーション	<b>適用あり:</b> WB, ICC/IF, Flow Cyt, IP
種交差性	<b>交差種:</b> Human
免疫原	Synthetic peptide within Human Cyclin A2 aa 100-200 (N terminal). The exact sequence is proprietary.
エピトープ	ab32498 reacts with an epitope located in the N terminal region of Cyclin A2
ポジティブ・コントロール	ICC/IF: HeLa (Human cervix adenocarcinoma epithelial cell) WB: HeLa untreated, HeLa treated G1/S phase, K562 and HeLa cell lysate
特記事項	<p>We are constantly working hard to ensure we provide our customers with best in class antibodies. As a result of this work we are pleased to now offer this antibody in purified format. We are in the process of updating our datasheets. The purified format is designated 'PUR' on our product labels. If you have any questions regarding this update, please contact our Scientific Support team.</p> <p>This product is a recombinant monoclonal antibody, which offers several advantages including:</p> <ul style="list-style-type: none"> <li>- High batch-to-batch consistency and reproducibility</li> <li>- Improved sensitivity and specificity</li> <li>- Long-term security of supply</li> <li>- Animal-free production</li> </ul> <p>For more information <a href="#">see here</a>.</p> <p>Our RabMAb<sup>®</sup> technology is a patented hybridoma-based technology for making rabbit monoclonal antibodies. For details on our patents, please refer to <a href="#">RabMAb<sup>®</sup> patents</a>.</p> <p>Mouse, Rat: We have preliminary internal testing data to indicate this antibody may not react with these species. Please contact us for more information.</p>

#### 製品の特性

製品の状態	Liquid
保存方法	Shipped at 4°C. Upon delivery aliquot and store at -20°C. Avoid freeze / thaw cycles.

バッファー	pH: 7.20 Preservative: 0.01% Sodium azide Constituents: 49% PBS, 50% Glycerol (glycerin, glycerine), 0.05% BSA
精製度	Protein A purified
ポリ/モノ	モノクローナル
クローン名	E399
アイソタイプ	IgG

## アプリケーション

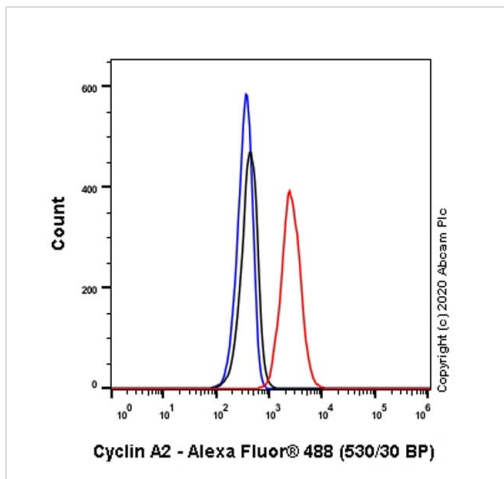
**The Abpromise guarantee**      **Abpromise保証は、** 次のテスト済みアプリケーションにおけるab32498の使用に適用されます  
アプリケーションノートには、推奨の開始希釈率がありますが、適切な希釈率につきましてはご検討ください。

アプリケーション	Abreviews	特記事項
WB		1/1000. Predicted molecular weight: 48 kDa.
ICC/IF		1/50.
Flow Cyt		1/30.
IP		1/20.

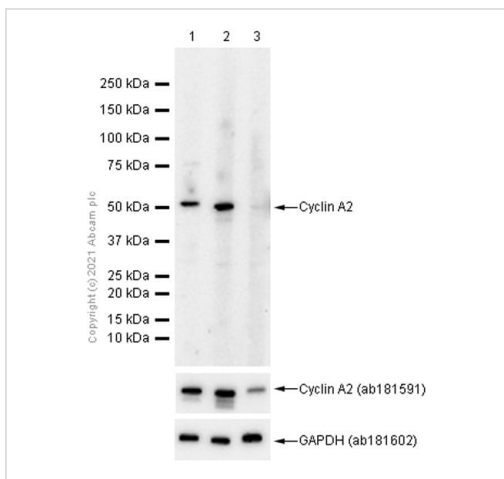
## ターゲット情報

機能	Essential for the control of the cell cycle at the G1/S (start) and the G2/M (mitosis) transitions.
配列類似性	Belongs to the cyclin family. Cyclin AB subfamily.
発生段階	Accumulates steadily during G2 and is abruptly destroyed at mitosis.
細胞内局在	Nucleus. Cytoplasm. Cytoplasmic when associated with SCAPER.

## 画像



Flow Cytometry - Anti-Cyclin A2 antibody [E399]  
(ab32498)



Western blot - Anti-Cyclin A2 antibody [E399]  
(ab32498)

Flow Cytometry analysis of HeLa (Human cervix adenocarcinoma epithelial cell) cells labelling Cyclin A2 with Purified ab32498 at 1:30 dilution (10 µg/ml) (Red). Cells were fixed with 4% Paraformaldehyde and permeabilised with 90% Methanol. A Goat anti rabbit IgG (Alexa Fluor™ 488, [ab150077](#)) secondary antibody was used at 1:2000. Isotype control - Rabbit monoclonal IgG (Black). Unlabelled control - Cell without incubation with primary antibody and secondary antibody (Blue).

**All lanes** : Anti-Cyclin A2 antibody [E399] (ab32498) at 1/1000 dilution (Purified)

**Lane 1** : HeLa (Human epithelial cell line from cervix adenocarcinoma) lysate; Untreated, asynchronous cells ([ab136811](#))

**Lane 2** : HeLa (Human epithelial cell line from cervix adenocarcinoma) lysate; G1/S arrested cells (thymidine treatment) ([ab136811](#))

**Lane 3** : HeLa (Human epithelial cell line from cervix adenocarcinoma) lysate; G2/M arrested cells (sequential thymidine and nocodazole treatments) ([ab136811](#))

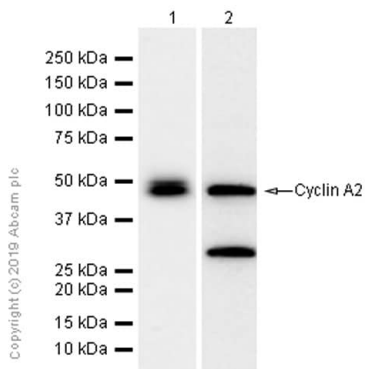
### Secondary

**All lanes** : Goat Anti-Rabbit IgG H&L (HRP) ([ab97051](#)) at 1/20000 dilution

**Predicted band size:** 48 kDa

**Observed band size:** 50 kDa

Cyclin A2 is down regulated at the G2/M phase.



Western blot - Anti-Cyclin A2 antibody [E399]  
(ab32498)

**All lanes :** Anti-Cyclin A2 antibody [E399] (ab32498) at 1/2000 dilution (Purified)

**Lane 1 :** K-562 (Human chronic myelogenous leukemia lymphoblast) whole cell lysate

**Lane 2 :** HeLa (Human cervix adenocarcinoma epithelial cell) whole cell lysate

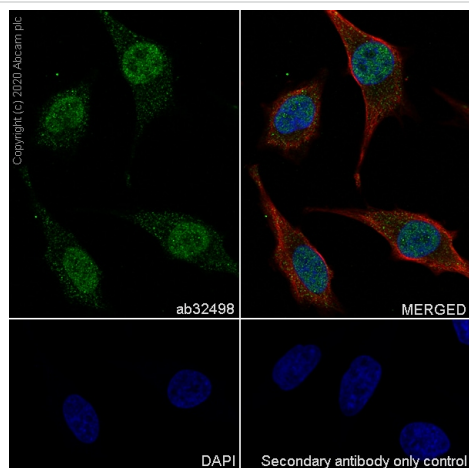
#### Secondary

**All lanes :** Goat Anti-Rabbit IgG H&L (HRP) ([ab97051](#)) at 1/20000 dilution

**Predicted band size:** 48 kDa

**Observed band size:** 50 kDa

The smaller band is due to a tissue-specific splice variant(PMID 22745723). The band of 35kDa maybe the cleaved form(PMID: 12176996).



Immunocytochemistry/ Immunofluorescence - Anti-Cyclin A2 antibody [E399] (ab32498)

Immunocytochemistry analysis of HeLa (Human cervix adenocarcinoma epithelial cell) cells labeling Cyclin A2 with Purified ab32498 at 1/50 dilution (5.66 µg/mL). Cells were fixed in 4% Paraformaldehyde and permeabilized with 0.1% tritonX-100. Cells were counterstained with Ab195889 Anti-alpha Tubulin antibody [DM1A] - Microtubule Marker (Alexa Fluor® 594) 1/200 (2.5 µg/mL). Goat anti rabbit IgG (Alexa Fluor® 488, [ab150077](#)) was used as the secondary antibody at 1/1000 (2 µg/mL) dilution. DAPI (blue) was used as nuclear counterstain. PBS instead of the primary antibody was used as the secondary antibody only control.

### Why choose a recombinant antibody?



**Research with confidence**  
Consistent and reproducible results



**Long-term and scalable supply**  
Recombinant technology



**Success from the first experiment**  
Confirmed specificity



**Ethical standards compliant**  
Animal-free production

Anti-Cyclin A2 antibody [E399] (ab32498)

**Please note:** All products are "FOR RESEARCH USE ONLY. NOT FOR USE IN DIAGNOSTIC PROCEDURES"

### Our Abpromise to you: Quality guaranteed and expert technical support

---

- Replacement or refund for products not performing as stated on the datasheet
- Valid for 12 months from date of delivery
- Response to your inquiry within 24 hours
- We provide support in Chinese, English, French, German, Japanese and Spanish
- Extensive multi-media technical resources to help you
- We investigate all quality concerns to ensure our products perform to the highest standards

If the product does not perform as described on this datasheet, we will offer a refund or replacement. For full details of the Abpromise, please visit <https://www.abcam.co.jp/abpromise> or contact our technical team.

### Terms and conditions

---

- Guarantee only valid for products bought direct from Abcam or one of our authorized distributors