


Anti-CXXC4 antibody ab105400

[7 References](#) [画像数 3](#)

製品の概要

製品名	Anti-CXXC4 antibody
製品の詳細	Rabbit polyclonal to CXXC4
由来種	Rabbit
アプリケーション	適用あり: IHC-P, ICC/IF, WB
種交差性	交差種: Human 交差が予測される動物種: Mouse, Rat 
免疫原	Synthetic peptide of 18 amino acids near the N terminal end of Human CXXC4 (NP_079488).
ポジティブ・コントロール	Human brain tissue lysate
特記事項	<p>The Life Science industry has been in the grips of a reproducibility crisis for a number of years. Abcam is leading the way in addressing this with our range of recombinant monoclonal antibodies and knockout edited cell lines for gold-standard validation. Please check that this product meets your needs before purchasing.</p> <p>If you have any questions, special requirements or concerns, please send us an inquiry and/or contact our Support team ahead of purchase. Recommended alternatives for this product can be found below, along with publications, customer reviews and Q&As</p>

製品の特性

製品の状態	Liquid
保存方法	Shipped at 4°C. Store at +4°C short term (1-2 weeks). Store at -20°C or -80°C. Avoid freeze / thaw cycle. The product can be stored for up to 12 months.
バッファー	pH: 7.2 Preservative: 0.02% Sodium azide Constituent: 99% PBS
精製度	Immunogen affinity purified
ポリ/モノ	ポリクローナル
アイソタイプ	IgG

アプリケーション

The Abpromise guarantee

Abpromise保証は、次のテスト済みアプリケーションにおけるab105400の使用に適用されます

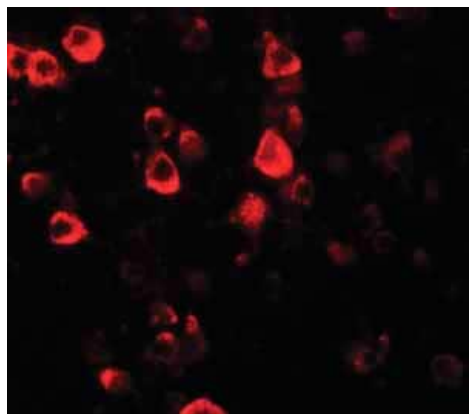
アプリケーションノートには、推奨の開始希釈率がありますが、適切な希釈率につきましてはご検討ください。

アプリケーション	Abreviews	特記事項
IHC-P		Use at an assay dependent concentration.
ICC/IF		Use a concentration of 20 µg/ml.
WB		Use a concentration of 1 - 2 µg/ml. Predicted molecular weight: 21 kDa.

ターゲット情報

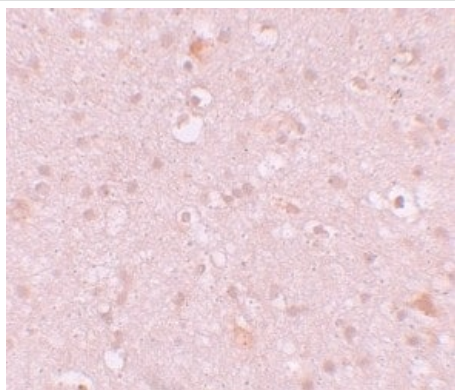
機能	Acts as a negative regulator of the Wnt signaling pathway via its interaction with DVL1.
配列類似性	Contains 1 CXXC-type zinc finger.
細胞内局在	Cytoplasm.

画像



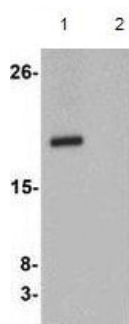
Immunofluorescence of CXXC4 in Human brain tissue with ab105400 at 20ug/mL.

Immunocytochemistry/ Immunofluorescence - Anti-CXXC4 antibody (ab105400)



Immunohistochemistry of CXXC4 in Human brain tissue with ab105400 at 10 µg/mL.

Immunohistochemistry (Formalin/PFA-fixed paraffin-embedded sections) - Anti-CXXC4 antibody (ab105400)



All lanes : Anti-CXXC4 antibody (ab105400) at 1 µg/ml

Lane 1 : Human brain tissue lysate

Lane 2 : Human brain tissue lysate with CXXC4 peptide

Lysates/proteins at 15 µg per lane.

Predicted band size: 21 kDa

Western blot - Anti-CXXC4 antibody (ab105400)

Please note: All products are "FOR RESEARCH USE ONLY. NOT FOR USE IN DIAGNOSTIC PROCEDURES"

Our Abpromise to you: Quality guaranteed and expert technical support

- Replacement or refund for products not performing as stated on the datasheet
- Valid for 12 months from date of delivery
- Response to your inquiry within 24 hours
- We provide support in Chinese, English, French, German, Japanese and Spanish
- Extensive multi-media technical resources to help you
- We investigate all quality concerns to ensure our products perform to the highest standards

If the product does not perform as described on this datasheet, we will offer a refund or replacement. For full details of the Abpromise, please visit <https://www.abcam.co.jp/abpromise> or contact our technical team.

Terms and conditions

- Guarantee only valid for products bought direct from Abcam or one of our authorized distributors