

Anti-CXCR6 antibody ab8023

★★★★★ [1 Abreviews](#) [9 References](#) [画像数 3](#)

製品の概要

製品名	Anti-CXCR6 antibody
製品の詳細	Rabbit polyclonal to CXCR6
由来種	Rabbit
アプリケーション	適用あり: IHC-P, WB
種交差性	交差種: Human
免疫原	Synthetic peptide, corresponding to amino acids 11-25 of Human Bonzo.
ポジティブ・コントロール	Human spleen tissue lysate
特記事項	<p>The Life Science industry has been in the grips of a reproducibility crisis for a number of years. Abcam is leading the way in addressing this with our range of recombinant monoclonal antibodies and knockout edited cell lines for gold-standard validation. Please check that this product meets your needs before purchasing.</p> <p>If you have any questions, special requirements or concerns, please send us an inquiry and/or contact our Support team ahead of purchase. Recommended alternatives for this product can be found below, along with publications, customer reviews and Q&As</p>

製品の特性

製品の状態	Liquid
保存方法	Shipped at 4°C. Store at +4°C.
バッファー	pH: 7.2 Preservative: 0.02% Sodium azide Constituent: PBS
精製度	Affinity purified
ポリ/モノ	ポリクローナル
アイソタイプ	IgG

アプリケーション

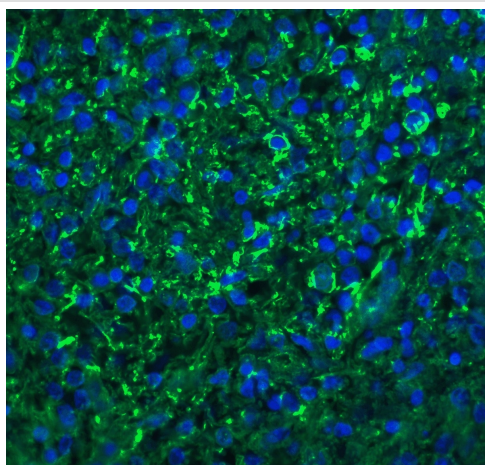
The Abpromise guarantee **Abpromise保証は、**次のテスト済みアプリケーションにおけるab8023の使用に適用されます
アプリケーションノートには、推奨の開始希釈率がありますが、適切な希釈率につきましてはご検討ください。

アプリケーション	Abreviews	特記事項
IHC-P		Use a concentration of 2.5 - 20 µg/ml.
WB		Use a concentration of 0.5 µg/ml. Predicted molecular weight: 44 kDa.
IF		Use a concentration of 20 µg/ml.

ターゲット情報

機能	Receptor for the C-X-C chemokine CXCL16. Used as a coreceptor by SIVs and by strains of HIV-2 and m-tropic HIV-1.
組織特異性	Expressed in lymphoid tissues and activated T cells.
配列類似性	Belongs to the G-protein coupled receptor 1 family.
細胞内局在	Cell membrane.

画像



Immunofluorescence of human spleen tissue labeling CXCR6 (Green) using ab8023 at 20 µg/ml. DAPI staining (Blue).

Immunofluorescence - Anti-CXCR6 antibody (ab8023)



All lanes : Anti-CXCR6 antibody (ab8023) at 1/500 dilution

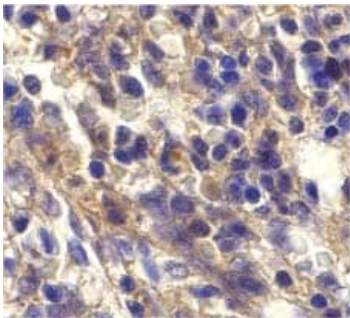
Lane 1 : human spleen tissue lysate with absence of peptide

Lane 2 : human spleen tissue lysate with presence of peptide

Predicted band size: 44 kDa

Observed band size: 44 kDa

Western blot - Anti-CXCR6 antibody (ab8023)



ab8023 at 20µg/ml staining CXCR6 in human spleen cells by IHC

Immunohistochemistry (Formalin/PFA-fixed paraffin-embedded sections) - Anti-CXCR6 antibody (ab8023)

Please note: All products are "FOR RESEARCH USE ONLY. NOT FOR USE IN DIAGNOSTIC PROCEDURES"

Our Abpromise to you: Quality guaranteed and expert technical support

- Replacement or refund for products not performing as stated on the datasheet
- Valid for 12 months from date of delivery
- Response to your inquiry within 24 hours
- We provide support in Chinese, English, French, German, Japanese and Spanish
- Extensive multi-media technical resources to help you
- We investigate all quality concerns to ensure our products perform to the highest standards

If the product does not perform as described on this datasheet, we will offer a refund or replacement. For full details of the Abpromise, please visit <https://www.abcam.co.jp/abpromise> or contact our technical team.

Terms and conditions

- Guarantee only valid for products bought direct from Abcam or one of our authorized distributors