

Anti-CXCR3 antibody [MM0223-7K22] ab89255

画像数 1

製品の概要

製品名	Anti-CXCR3 antibody [MM0223-7K22]
製品の詳細	Mouse monoclonal [MM0223-7K22] to CXCR3
由来種	Mouse
アプリケーション	適用あり: IHC-Fr, Neutralising, Flow Cyt, WB
種交差性	交差種: Human
免疫原	Human recombinant CXCR3
ポジティブ・コントロール	WB: Human placenta tissue lysate.
特記事項	<p>The Life Science industry has been in the grips of a reproducibility crisis for a number of years. Abcam is leading the way in addressing this with our range of recombinant monoclonal antibodies and knockout edited cell lines for gold-standard validation. Please check that this product meets your needs before purchasing.</p> <p>If you have any questions, special requirements or concerns, please send us an inquiry and/or contact our Support team ahead of purchase. Recommended alternatives for this product can be found below, along with publications, customer reviews and Q&As</p>

製品の特性

製品の状態	Liquid
保存方法	Shipped at 4°C. Upon delivery aliquot and store at -20°C. Avoid repeated freeze / thaw cycles.
バッファー	Constituent: PBS
精製度	Protein G purified
特記事項 (精製)	The IgG fraction of culture supernatant was purified by Protein G affinity chromatography.
ポリ/モノ	モノクローナル
クローン名	MM0223-7K22
アイソタイプ	IgG1

アプリケーション

The Abpromise guarantee

Abpromise保証は、次のテスト済みアプリケーションにおけるab89255の使用に適用されます

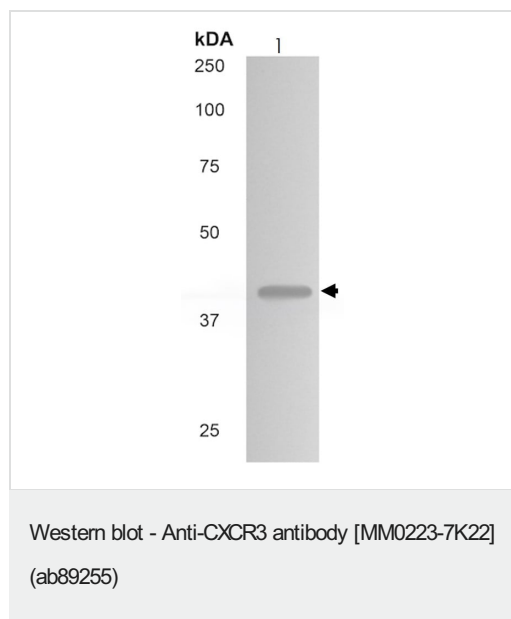
アプリケーションノートには、推奨の開始希釈率がありますが、適切な希釈率につきましてはご確認ください。

アプリケーション	Abreviews	特記事項
IHC-Fr		Use at an assay dependent concentration.
Neutralising		Use at an assay dependent concentration.
Flow Cyt		Use at an assay dependent concentration. ab170190 - Mouse monoclonal IgG1, is suitable for use as an isotype control with this antibody.
WB		1/500 - 1/1000. Predicted molecular weight: 40 kDa.

ターゲット情報

機能	Receptor for CXCL9, CXCL10 and CXCL11 and mediates the proliferation of human mesangial cells (HMC). Isoform 2 is a receptor for CXCL4 and also mediates the inhibitory activities of CXCL9, CXCL10 and CXCL11 on the growth of human microvascular endothelial cells (HMVEC). May play a role in angiogenesis. Isoform 3 mediates the activity of CXCL11.
組織特異性	Isoform 1 and isoform 2 are mainly expressed in heart, kidney, liver and skeletal muscle. Isoform 1 is also expressed in placenta.
配列類似性	Belongs to the G-protein coupled receptor 1 family.
細胞内局在	Cell membrane.

画像



Anti-CXCR3 antibody [MM0223-7K22] (ab89255) at 1/500 dilution
+ Human placenta tissue lysate

Predicted band size: 40 kDa

Observed band size: 41 kDa

Please note: All products are "FOR RESEARCH USE ONLY. NOT FOR USE IN DIAGNOSTIC PROCEDURES"

Our Abpromise to you: Quality guaranteed and expert technical support

- Replacement or refund for products not performing as stated on the datasheet
- Valid for 12 months from date of delivery
- Response to your inquiry within 24 hours

- We provide support in Chinese, English, French, German, Japanese and Spanish
- Extensive multi-media technical resources to help you
- We investigate all quality concerns to ensure our products perform to the highest standards

If the product does not perform as described on this datasheet, we will offer a refund or replacement. For full details of the Abpromise, please visit <https://www.abcam.co.jp/abpromise> or contact our technical team.

Terms and conditions

- Guarantee only valid for products bought direct from Abcam or one of our authorized distributors