

Anti-CXCR2 antibody ab65968

★ ★ ★ ★ ★ 1 Abreviews 9 References 画像数 2

医薬用外劇物

製品の概要

製品名	Anti-CXCR2 antibody
製品の詳細	Rabbit polyclonal to CXCR2
由来種	Rabbit
特異性	No cross reactivity with other proteins.
アプリケーション	適用あり: WB
種交差性	交差種: Mouse, Rat, Human
免疫原	Synthetic peptide corresponding to Human CXCR2 aa 196-212 (internal sequence). Different from the related mouse sequence by six amino acids. Sequence: CYEDMGNNTANWRMLLR

 [Run BLAST with](#)

 [Run BLAST with](#)

ポジティブ・コントロール	WB: Rat spleen, rat kidney, rat brain, mouse testis, human rectal cancer, and mouse brain tissue lysates and HEPA whole cell lysate.
--------------	--

特記事項	<p>The Life Science industry has been in the grips of a reproducibility crisis for a number of years. Abcam is leading the way in addressing this with our range of recombinant monoclonal antibodies and knockout edited cell lines for gold-standard validation. Please check that this product meets your needs before purchasing.</p> <p>If you have any questions, special requirements or concerns, please send us an inquiry and/or contact our Support team ahead of purchase. Recommended alternatives for this product can be found below, along with publications, customer reviews and Q&As</p>
------	---

製品の特性

製品の状態	Liquid
保存方法	Shipped at 4°C. Upon delivery aliquot. Store at -20°C long term. Avoid freeze / thaw cycle.
バッファー	Preservatives: 0.025% Thimerosal (merthiolate), 0.025% Sodium azide Constituents: 2.5% BSA, 0.45% Sodium chloride, 0.1% Dibasic monohydrogen sodium phosphate
精製度	Immunogen affinity purified
ポリ/モノ	ポリクローナル

アイソタイプ

IgG

アプリケーション

The Abpromise guarantee

Abpromise保証は、次のテスト済みアプリケーションにおけるab65968の使用に適用されます

アプリケーションノートには、推奨の開始希釈率がありますが、適切な希釈率につきましてはご確認ください。

アプリケーション	Abreviews	特記事項
WB	★★★★★ (1)	Use a concentration of 0.1 - 0.5 µg/ml. Detects a band of approximately 41 kDa (predicted molecular weight: 41 kDa).

ターゲット情報

機能

Receptor for interleukin-8 which is a powerful neutrophil chemotactic factor. Binding of IL-8 to the receptor causes activation of neutrophils. This response is mediated via a G-protein that activates a phosphatidylinositol-calcium second messenger system. Binds to IL-8 with high affinity. Also binds with high affinity to CXCL3, GRO/MGSA and NAP-2.

配列類似性

Belongs to the G-protein coupled receptor 1 family.

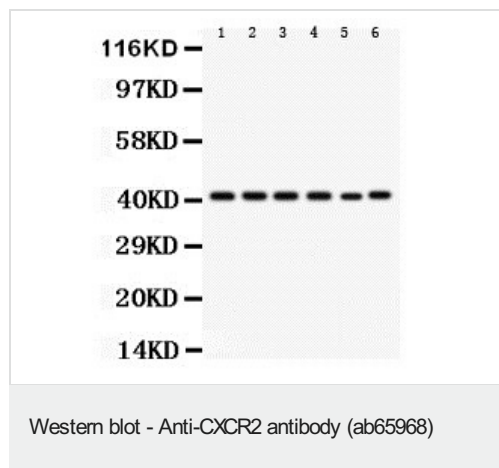
翻訳後修飾

Phosphorylated upon ligand binding; which is required for desensitization.

細胞内局在

Cell membrane.

画像



All lanes : Anti-CXCR2 antibody (ab65968) at 0.5 µg/ml

Lane 1 : Rat spleen tissue lysate at 50 µg

Lane 2 : Rat kidney tissue lysate at 50 µg

Lane 3 : Rat brain tissue lysate at 50 µg

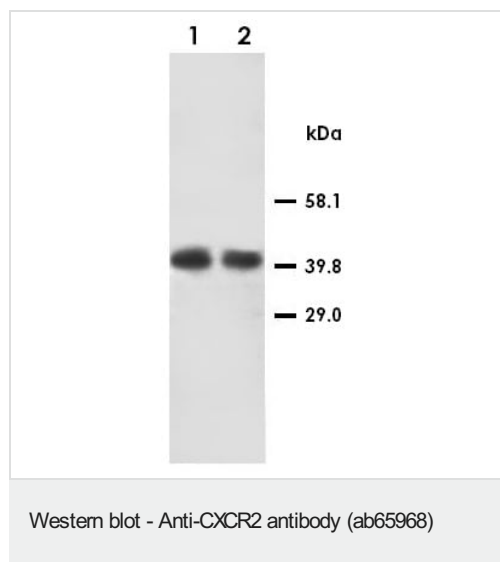
Lane 4 : Mouse testis tissue lysate at 50 µg

Lane 5 : HEPA whole cell lysate at 40 µg

Lane 6 : Mouse brain tissue lysate at 50 µg

Predicted band size: 41 kDa

Observed band size: 41 kDa



All lanes : Anti-CXCR2 antibody (ab65968)

All lanes : Human rectal cancer tissue lysate

Predicted band size: 41 kDa

Please note: All products are "FOR RESEARCH USE ONLY. NOT FOR USE IN DIAGNOSTIC PROCEDURES"

Our Abpromise to you: Quality guaranteed and expert technical support

- Replacement or refund for products not performing as stated on the datasheet
- Valid for 12 months from date of delivery
- Response to your inquiry within 24 hours
- We provide support in Chinese, English, French, German, Japanese and Spanish
- Extensive multi-media technical resources to help you
- We investigate all quality concerns to ensure our products perform to the highest standards

If the product does not perform as described on this datasheet, we will offer a refund or replacement. For full details of the Abpromise, please visit <https://www.abcam.co.jp/abpromise> or contact our technical team.

Terms and conditions

- Guarantee only valid for products bought direct from Abcam or one of our authorized distributors