

Anti-CXCL9 antibody ab9720

★★★★★ **2 Abreviews** **10 References** 画像数 1

製品の概要

製品名	Anti-CXCL9 antibody
製品の詳細	Rabbit polyclonal to CXCL9
由来種	Rabbit
アプリケーション	適用あり: ELISA, Sandwich ELISA, Neutralising, WB, IHC-P
種交差性	交差種: Human
免疫原	Recombinant full length protein corresponding to Human CXCL9. Highly pure (>98%) recombinant hMIG (human Monokine induced by Interferon-Gamma) Database link: Q07325
ポジティブ・コントロール	WB: Recombinant human CXCL9 protein (ab9721).
特記事項	<p>Although some customers have been successful in IHC we no longer batch test in this application.</p> <p>The Life Science industry has been in the grips of a reproducibility crisis for a number of years. Abcam is leading the way in addressing this with our range of recombinant monoclonal antibodies and knockout edited cell lines for gold-standard validation. Please check that this product meets your needs before purchasing.</p> <p>If you have any questions, special requirements or concerns, please send us an inquiry and/or contact our Support team ahead of purchase. Recommended alternatives for this product can be found below, along with publications, customer reviews and Q&As</p>

製品の特性

製品の状態	Lyophilized:Reconstitute with 200µl of sterile water.
保存方法	Shipped at 4°C. Store at +4°C short term (1-2 weeks). Upon delivery aliquot. Store at -20°C long term.
バッファー	No preservative, sterile filtered
精製度	Immunogen affinity purified
ポリ/モノ	ポリクローナル
アイソタイプ	IgG
軽鎖の種類	unknown

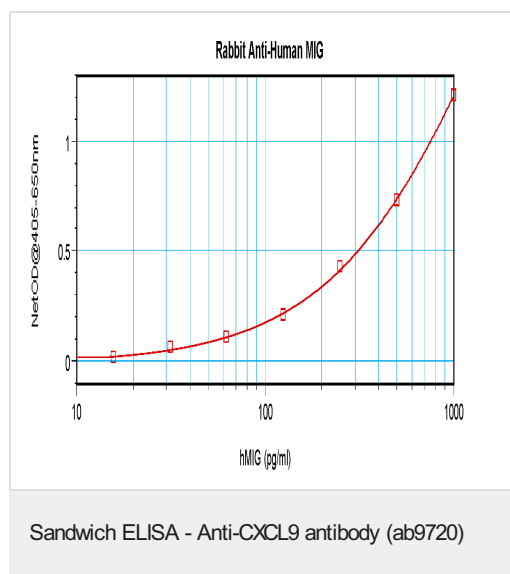
The Abpromise guarantee Abpromise保証は、 次のテスト済みアプリケーションにおけるab9720の使用に適用されます
アプリケーションノートには、推奨の開始希釈率がありますが、適切な希釈率につきましてはご確認ください。

アプリケーション	Abreviews	特記事項
ELISA		Use at an assay dependent concentration.
Sandwich ELISA		Use a concentration of 0.5 - 2 µg/ml. To detect hOPG by sandwich ELISA (using 100 µl/well antibody solution) a concentration of 0.5 - 2.0 µg/ml of this antibody is required. This antigen affinity purified antibody, in conjunction with suitable detection antibody, allows the detection of at least 0.2 - 0.4 ng/well of recombinant hOPG.
Neutralising		Use at an assay dependent concentration. To yield one-half maximal inhibition [ND50] of the biological activity of hMIG (100.00 ng/ml), a concentration of 5.0 - 7.0 Åµg/ml of this antibody is required
WB		Use at an assay dependent concentration.
IHC-P	★★★★★ (2)	Use at an assay dependent concentration.

ターゲット情報

機能	Cytokine that affects the growth, movement, or activation state of cells that participate in immune and inflammatory response. Chemotactic for activated T-cells. Binds to CXCR3.
配列類似性	Belongs to the intercrine alpha (chemokine CxC) family.
細胞内局在	Secreted.

画像



Detection of hMIG (human Monokine induced by Interferon-Gamma) by sandwich ELISA (100 µl/well antibody solution). ab9720 as a detection antibody, allows the detection of at least 0.2 - 0.4 ng/well of recombinant hMIG.

Please note: All products are "FOR RESEARCH USE ONLY. NOT FOR USE IN DIAGNOSTIC PROCEDURES"

Our Abpromise to you: Quality guaranteed and expert technical support

- Replacement or refund for products not performing as stated on the datasheet
- Valid for 12 months from date of delivery
- Response to your inquiry within 24 hours

- We provide support in Chinese, English, French, German, Japanese and Spanish
- Extensive multi-media technical resources to help you
- We investigate all quality concerns to ensure our products perform to the highest standards

If the product does not perform as described on this datasheet, we will offer a refund or replacement. For full details of the Abpromise, please visit <https://www.abcam.co.jp/abpromise> or contact our technical team.

Terms and conditions

- Guarantee only valid for products bought direct from Abcam or one of our authorized distributors