




Anti-CXCL2 antibody ab91511

6 References [画像数 2](#)

製品の概要

製品名	Anti-CXCL2 antibody
製品の詳細	Goat polyclonal to CXCL2
由来種	Goat
アプリケーション	適用あり: WB
種交差性	交差種: Human 交差が予測される動物種: Cynomolgus monkey 
免疫原	Synthetic peptide corresponding to Human CXCL2 aa 94-107 (C terminal). Synthetic peptide: C-KKIIEKMLKNGKSN , corresponding to C terminal amino acids 94-107 of Human GRO beta (NP_002080.1). Sequence: C-KKIIEKMLKNGKSN <div>  Run BLAST with  Run BLAST with </div>
ポジティブ・コントロール	Recombinant Human CXCL2 protein (ab84204) can be used as a positive control in WB. Human duodenum lysate
特記事項	<p>The Life Science industry has been in the grips of a reproducibility crisis for a number of years. Abcam is leading the way in addressing this with our range of recombinant monoclonal antibodies and knockout edited cell lines for gold-standard validation. Please check that this product meets your needs before purchasing.</p> <p>If you have any questions, special requirements or concerns, please send us an inquiry and/or contact our Support team ahead of purchase. Recommended alternatives for this product can be found below, along with publications, customer reviews and Q&As</p>

製品の特性

製品の状態	Liquid
保存方法	Shipped at 4°C. Upon delivery aliquot and store at -20°C. Avoid repeated freeze / thaw cycles.
バッファー	pH: 7.30 Preservative: 0.02% Sodium azide Constituents: 0.5% Tris buffered saline, 0.5% BSA
精製度	Immunogen affinity purified

特記事項(精製)	ab91511 was purified from goat serum by ammonium sulphate precipitation, followed by antigen affinity chromatography using the immunizing peptide.
ポリモノ	ポリクローナル
アイソタイプ	IgG

アプリケーション

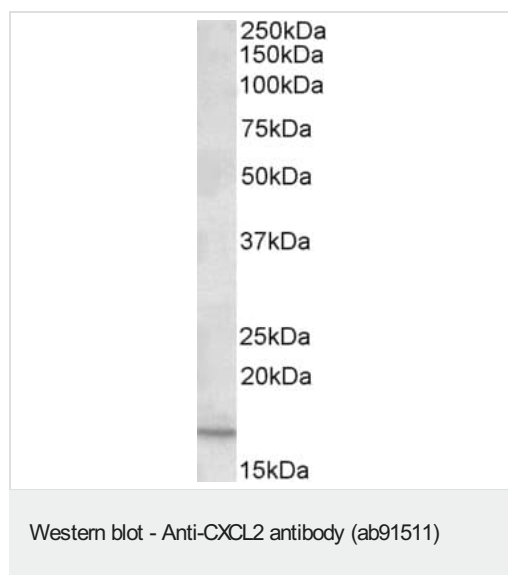
The Abpromise guarantee **Abpromise保証は、次のテスト済みアプリケーションにおけるab91511の使用に適用されます**
 アプリケーションノートには、推奨の開始希釈率がありますが、適切な希釈率につきましてはご検討ください。

アプリケーション	Abreviews	特記事項
WB		Use a concentration of 0.03 - 0.1 µg/ml. Detects a band of approximately 17 kDa (predicted molecular weight: 11 kDa). 1 hour primary incubation is recommended for this product.

ターゲット情報

機能	Produced by activated monocytes and neutrophils and expressed at sites of inflammation. Hematopoietic chemokine, which, in vitro, suppresses hematopoietic progenitor cell proliferation. GRO-beta(5-73) shows a highly enhanced hematopoietic activity.
配列類似性	Belongs to the intercrine alpha (chemokine CxC) family.
翻訳後修飾	The N-terminal processed form GRO-beta(5-73) is produced by proteolytic cleavage after secretion from bone marrow stromal cells.
細胞内局在	Secreted.

画像



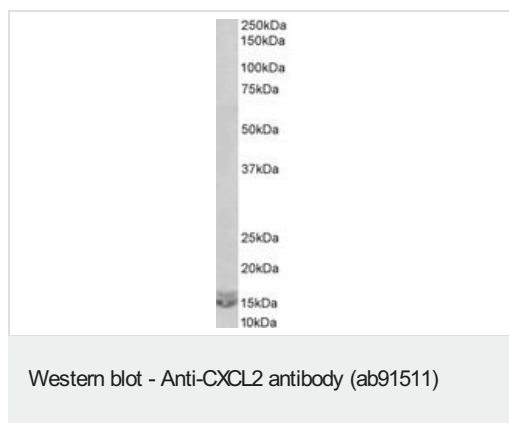
Anti-CXCL2 antibody (ab91511) at 0.2 µg/ml + Human duodenum lysate at 35 µg

Developed using the ECL technique.

Predicted band size: 11 kDa

Observed band size: 17 kDa

Exposure time: 1 hour



ab91511 (0.03µg/ml) staining of Daudi lysate (35µg protein in RIPA buffer). Primary incubation was 1 hour. Detected by chemiluminescence

Please note: All products are "FOR RESEARCH USE ONLY. NOT FOR USE IN DIAGNOSTIC PROCEDURES"

Our Abpromise to you: Quality guaranteed and expert technical support

- Replacement or refund for products not performing as stated on the datasheet
- Valid for 12 months from date of delivery
- Response to your inquiry within 24 hours
- We provide support in Chinese, English, French, German, Japanese and Spanish
- Extensive multi-media technical resources to help you
- We investigate all quality concerns to ensure our products perform to the highest standards

If the product does not perform as described on this datasheet, we will offer a refund or replacement. For full details of the Abpromise, please visit <https://www.abcam.co.jp/abpromise> or contact our technical team.

Terms and conditions

- Guarantee only valid for products bought direct from Abcam or one of our authorized distributors