

Anti-CXCL1/GRO alpha antibody ab86436

★★★★★ 1 Abreviews 37 References 画像数 2

医薬用外劇物

製品の概要

製品名	Anti-CXCL1/GRO alpha antibody
製品の詳細	Rabbit polyclonal to CXCL1/GRO alpha
由来種	Rabbit
特異性	The immunogen for ab86436 has >90% homology to mouse GRO beta
アプリケーション	適用あり: WB
種交差性	交差種: Mouse, Human, Recombinant fragment
免疫原	Synthetic peptide surrounding amino acid 78 of mouse GRO alpha.
特記事項	<p>This product is manufactured by BioVision, an Abcam company and was previously called 5212 KC Antibody.</p> <p>The Life Science industry has been in the grips of a reproducibility crisis for a number of years. Abcam is leading the way in addressing this with our range of recombinant monoclonal antibodies and knockout edited cell lines for gold-standard validation. Please check that this product meets your needs before purchasing.</p> <p>If you have any questions, special requirements or concerns, please send us an inquiry and/or contact our Support team ahead of purchase. Recommended alternatives for this product can be found below, along with publications, customer reviews and Q&As</p>

製品の特性

製品の状態	Liquid
保存方法	Shipped at 4°C. Upon delivery aliquot and store at -20°C or -80°C. Avoid repeated freeze / thaw cycles.
バッファー	Preservative: 0.01% Thimerosal (merthiolate) Constituents: 0.5% BSA, 30% Glycerol (glycerin, glycerine)
精製度	Immunogen affinity purified
ポリ/モノ	ポリクローナル
アイソタイプ	IgG

アプリケーション

The Abpromise guarantee

Abpromise保証は、次のテスト済みアプリケーションにおけるab86436の使用に適用されます

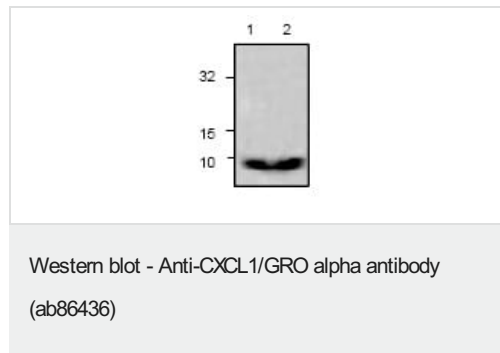
アプリケーションノートには、推奨の開始希釈率がありますが、適切な希釈率につきましてはご確認ください。

アプリケーション	Abreviews	特記事項
WB		Use a concentration of 0.5 - 4 µg/ml. Detects a band of approximately 9 kDa (predicted molecular weight: 11 kDa).

ターゲット情報

機能	Has chemotactic activity for neutrophils. May play a role in inflammation and exerts its effects on endothelial cells in an autocrine fashion. In vitro, the processed forms GRO-alpha(4-73), GRO-alpha(5-73) and GRO-alpha(6-73) show a 30-fold higher chemotactic activity.
配列類似性	Belongs to the intercrine alpha (chemokine CxC) family.
翻訳後修飾	N-terminal processed forms GRO-alpha(4-73), GRO-alpha(5-73) and GRO-alpha(6-73) are produced by proteolytic cleavage after secretion from peripheral blood monocytes.
細胞内局在	Secreted.

画像



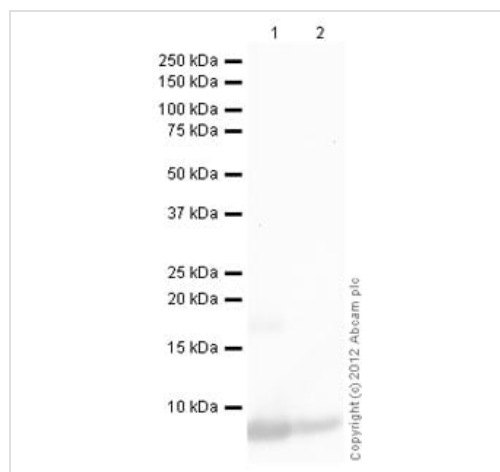
All lanes : Anti-CXCL1/GRO alpha antibody (ab86436) at 0.5 µg/ml

Lane 1 : Jurkat cell lysate

Lane 2 : 3T3 cell lysate

Predicted band size: 11 kDa

Observed band size: 9 kDa



Western blot - Anti-CXCL1/GRO alpha antibody
(ab86436)

All lanes : Anti-CXCL1/GRO alpha antibody (ab86436) at 0.5 µg/ml

Lane 1 : Recombinant rat CXCL1/GRO alpha protein (**ab9773**) at 0.1 µg

Lane 2 : Recombinant rat CXCL1/GRO alpha protein (**ab9773**) at 0.01 µg

Secondary

All lanes : Goat Anti-Rabbit IgG H&L (HRP) preadsorbed (**ab97080**) at 1/5000 dilution

Developed using the ECL technique.

Performed under reducing conditions.

Predicted band size: 11 kDa

Exposure time: 1 minute

Please note: All products are "FOR RESEARCH USE ONLY. NOT FOR USE IN DIAGNOSTIC PROCEDURES"

Our Abpromise to you: Quality guaranteed and expert technical support

- Replacement or refund for products not performing as stated on the datasheet
- Valid for 12 months from date of delivery
- Response to your inquiry within 24 hours
- We provide support in Chinese, English, French, German, Japanese and Spanish
- Extensive multi-media technical resources to help you
- We investigate all quality concerns to ensure our products perform to the highest standards

If the product does not perform as described on this datasheet, we will offer a refund or replacement. For full details of the Abpromise, please visit <https://www.abcam.co.jp/abpromise> or contact our technical team.

Terms and conditions

- Guarantee only valid for products bought direct from Abcam or one of our authorized distributors