

Anti-CXCL14 antibody ab46010

10 References [画像数 1](#)

製品の概要

製品名	Anti-CXCL14 antibody
製品の詳細	Rabbit polyclonal to CXCL14
由来種	Rabbit
アプリケーション	適用あり: Sandwich ELISA, ICC/IF, IHC-P, WB, ELISA
種交差性	交差種: Human
免疫原	Highly pure (>98%) recombinant hBRAK (human BRAK).
特記事項	<p>Although some customers have been successful in IHC we no longer batch test in this application. The sterile filtered antibody solution was lyophilized from 0.5xPBS, pH7.4.</p> <p>The Life Science industry has been in the grips of a reproducibility crisis for a number of years. Abcam is leading the way in addressing this with our range of recombinant monoclonal antibodies and knockout edited cell lines for gold-standard validation. Please check that this product meets your needs before purchasing.</p> <p>If you have any questions, special requirements or concerns, please send us an inquiry and/or contact our Support team ahead of purchase. Recommended alternatives for this product can be found below, along with publications, customer reviews and Q&As</p>

製品の特性

製品の状態	Lyophilized:Reconstitute 100µl sterile water to give a concentration 1 mg/ml. Please note that if you receive this product in liquid form it has already been reconstituted as described and no further reconstitution is necessary.
保存方法	Shipped at 4°C. Store at +4°C short term (1-2 weeks). Upon delivery aliquot. Store at -20°C long term.
精製度	Protein A purified
ポリ/モノ	ポリクローナル
アイソタイプ	IgG

アプリケーション

The Abpromise guarantee

Abpromise保証は、次のテスト済みアプリケーションにおけるab46010の使用に適用されます

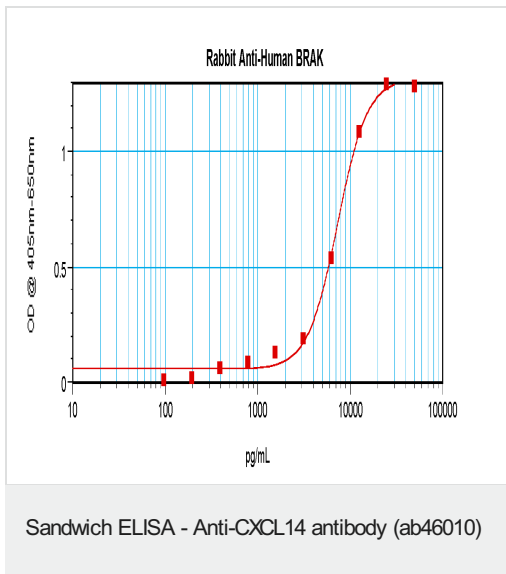
アプリケーションノートには、推奨の開始希釈率がありますが、適切な希釈率につきましてはご確認ください。

アプリケーション	Abreviews	特記事項
Sandwich ELISA		Use at an assay dependent concentration. To detect CXCL14 by sandwich ELISA (using 100 µl/well antibody solution) a concentration of 0.5 - 2.0 µg/ml of this antibody is required.
ICC/IF		Use at an assay dependent concentration.
IHC-P		Use at an assay dependent concentration.
WB		Use at an assay dependent concentration. Predicted molecular weight: 13 kDa. Detection limit 1.5 - 3.0 ng/lane under reducing or non-reducing conditions.
ELISA		Use at an assay dependent concentration. Detection limit 0.2 - 0.4 ng/well.

ターゲット情報

機能	Potent chemoattractant for neutrophils, and weaker for dendritic cells. Not chemotactic for T-cells, B-cells, monocytes, natural killer cells or granulocytes. Does not inhibit proliferation of myeloid progenitors in colony formation assays.
組織特異性	Expressed in heart, brain, placenta, lung, liver, skeletal muscle, kidney and pancreas. Highly expressed in normal tissue without inflammatory stimuli and infrequently expressed in cancer cell lines. Weakly expressed in monocyte-derived dendritic cells. Not detected in lung or unstimulated peripheral blood lymphocytes.
配列類似性	Belongs to the intercrine alpha (chemokine CxC) family.
細胞内局在	Secreted.

画像



Please note: All products are "FOR RESEARCH USE ONLY. NOT FOR USE IN DIAGNOSTIC PROCEDURES"

Our Abpromise to you: Quality guaranteed and expert technical support

- Replacement or refund for products not performing as stated on the datasheet
- Valid for 12 months from date of delivery
- Response to your inquiry within 24 hours
- We provide support in Chinese, English, French, German, Japanese and Spanish
- Extensive multi-media technical resources to help you
- We investigate all quality concerns to ensure our products perform to the highest standards

If the product does not perform as described on this datasheet, we will offer a refund or replacement. For full details of the Abpromise, please visit <https://www.abcam.co.jp/abpromise> or contact our technical team.

Terms and conditions

- Guarantee only valid for products bought direct from Abcam or one of our authorized distributors