

Anti-CX3CR1 antibody ab8020

★★★★☆ [7 Abreviews](#) [14 References](#) [画像数 3](#)

製品の概要

製品名	Anti-CX3CR1 antibody
製品の詳細	Rabbit polyclonal to CX3CR1
由来種	Rabbit
アプリケーション	適用あり: IHC-P, WB 適用なし: ICC/IF
種交差性	交差種: Human 交差が予測される動物種: Mouse, Rat 
免疫原	Synthetic peptide, corresponding to amino acids 175-189 of Human CX3CR1.
ポジティブ・コントロール	THP-1 cell lysate
特記事項	<p>The Life Science industry has been in the grips of a reproducibility crisis for a number of years. Abcam is leading the way in addressing this with our range of recombinant monoclonal antibodies and knockout edited cell lines for gold-standard validation. Please check that this product meets your needs before purchasing.</p> <p>If you have any questions, special requirements or concerns, please send us an inquiry and/or contact our Support team ahead of purchase. Recommended alternatives for this product can be found below, along with publications, customer reviews and Q&As</p>

製品の特性

製品の状態	Liquid
保存方法	Shipped at 4°C. Store at +4°C short term (1-2 weeks). Store at +4°C.
バッファー	pH: 7.2 Preservative: 0.02% Sodium azide
精製度	Affinity purified
ポリ/モノ	ポリクローナル
アイソタイプ	IgG

アプリケーション

The Abpromise guarantee

Abpromise保証は、次のテスト済みアプリケーションにおけるab8020の使用に適用されます

アプリケーションノートには、推奨の開始希釈率がありますが、適切な希釈率につきましてはご確認ください。

アプリケーション	Abreviews	特記事項
IHC-P	★★★★☆ (1)	Use a concentration of 10 µg/ml.
WB	★★★★☆ (3)	Use a concentration of 1 µg/ml. Predicted molecular weight: 50 kDa.

追加情報

Is unsuitable for ICC/IF.

ターゲット情報

機能

Receptor for the CX3C chemokine fractalkine and mediates both its adhesive and migratory functions. Acts as coreceptor with CD4 for HIV-1 virus envelope protein (in vitro). Isoform 2 and isoform 3 seem to be more potent HIV-1 coreceptors than isoform 1.

組織特異性

Expressed in lymphoid and neural tissues.

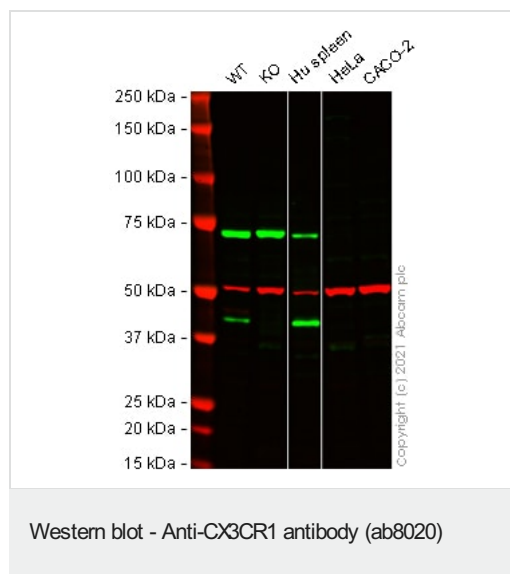
配列類似性

Belongs to the G-protein coupled receptor 1 family.

細胞内局在

Cell membrane.

画像



All lanes : Anti-CX3CR1 antibody (ab8020) at 1 µg/ml

Lane 1 : Wild-type THP-1 cell lysate

Lane 2 : CX3CR1 knockout THP-1 cell lysate

Lane 3 : Human Spleen cell lysate

Lane 4 : HeLa cell lysate

Lane 5 : Caco-2 cell lysate

Lysates/proteins at 20 µg per lane.

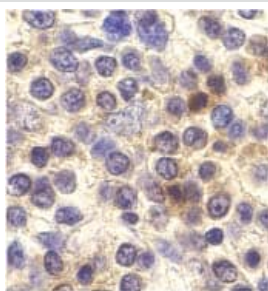
Performed under reducing conditions.

Predicted band size: 50 kDa

Observed band size: 42 kDa

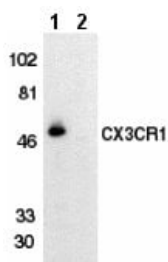
False colour image of Western blot: Anti-CX3CR1 antibody staining at 1 µg/ml, shown in green; Mouse anti-Alpha Tubulin [DM1A] ([ab7291](#)) loading control staining at 1/20000 dilution, shown in red. In Western blot, ab8020 was shown to bind specifically to CX3CR1. A band was observed at 42 kDa in wild-type THP-1 cell lysates with no signal observed at this size in CX3CR1 knockout cell line

ab273713 (knockout cell lysate **ab275510**). To generate this image, wild-type and CX3CR1 knockout THP-1 cell lysates were analysed. First, samples were run on an SDS-PAGE gel then transferred onto a nitrocellulose membrane. Membranes were blocked in 5 % milk in TBS-0.1 % Tween[®] 20 (TBS-T) before incubation with primary antibodies overnight at 4 °C. Blots were washed four times in TBS-T, incubated with secondary antibodies for 1 h at room temperature, washed again four times then imaged. Secondary antibodies used were Goat anti-Rabbit IgG H&L (IRDye[®] 800CW) preabsorbed (**ab216773**) and Goat anti-Mouse IgG H&L (IRDye[®] 680RD) preabsorbed (**ab216776**) at 1/20000 dilution.



Immunohistochemistry (Formalin/PFA-fixed paraffin-embedded sections) - Anti-CX3CR1 antibody (ab8020)

ab8020 at 10µg/ml staining CX3CR1 in human spleen cells by IHC



Western blot - Anti-CX3CR1 antibody (ab8020)

All lanes : Anti-CX3CR1 antibody (ab8020) at 1/500 dilution

Lane 1 : THP-1 cell lysate with absence of blocking peptide

Lane 2 : THP-1 cell lysate with presence of blocking peptide

Predicted band size: 50 kDa

Observed band size: 50 kDa

Please note: All products are "FOR RESEARCH USE ONLY. NOT FOR USE IN DIAGNOSTIC PROCEDURES"

Our Abpromise to you: Quality guaranteed and expert technical support

- Replacement or refund for products not performing as stated on the datasheet
- Valid for 12 months from date of delivery
- Response to your inquiry within 24 hours
- We provide support in Chinese, English, French, German, Japanese and Spanish
- Extensive multi-media technical resources to help you

- We investigate all quality concerns to ensure our products perform to the highest standards

If the product does not perform as described on this datasheet, we will offer a refund or replacement. For full details of the Abpromise, please visit <https://www.abcam.co.jp/abpromise> or contact our technical team.

Terms and conditions

- Guarantee only valid for products bought direct from Abcam or one of our authorized distributors