

Anti-CX3CL1 antibody [MM0207-8J23] ab89229

3 References [画像数 1](#)

製品の概要

製品名	Anti-CX3CL1 antibody [MM0207-8J23]
製品の詳細	Mouse monoclonal [MM0207-8J23] to CX3CL1
由来種	Mouse
アプリケーション	適用あり: IHC-P, WB
種交差性	交差種: Human
免疫原	Recombinant full length Human protein
ポジティブ・コントロール	WB: Human placenta tissue lysate.
特記事項	<p>The Life Science industry has been in the grips of a reproducibility crisis for a number of years. Abcam is leading the way in addressing this with our range of recombinant monoclonal antibodies and knockout edited cell lines for gold-standard validation. Please check that this product meets your needs before purchasing.</p> <p>If you have any questions, special requirements or concerns, please send us an inquiry and/or contact our Support team ahead of purchase. Recommended alternatives for this product can be found below, along with publications, customer reviews and Q&As</p>

製品の特性

製品の状態	Liquid
保存方法	Shipped at 4°C. Upon delivery aliquot and store at -20°C. Avoid repeated freeze / thaw cycles.
バッファー	Constituent: PBS
精製度	Protein G purified
ポリ/モノ	モノクローナル
クローン名	MM0207-8J23
アイソタイプ	IgG1

アプリケーション

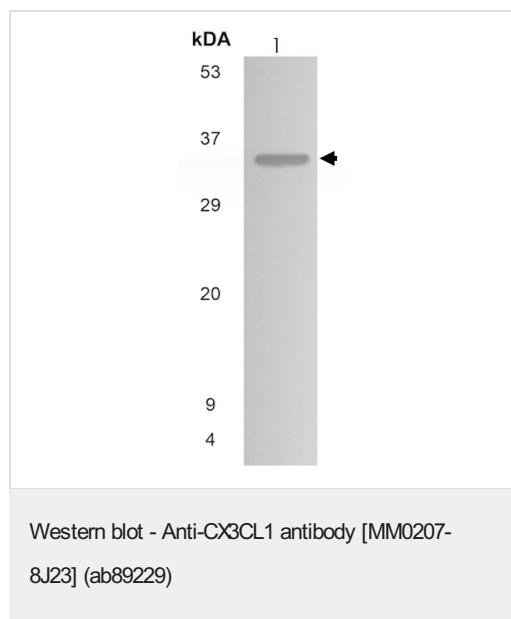
The Abpromise guarantee **Abpromise保証は、** 次のテスト済みアプリケーションにおけるab89229の使用に適用されます
 アプリケーションノートには、推奨の開始希釈率がありますが、適切な希釈率につきましてはご検討ください。

アプリケーション	Abreviews	特記事項
IHC-P		Use at an assay dependent concentration.
WB		1/500 - 1/1000. Predicted molecular weight: 42 kDa.

ターゲット情報

機能	The soluble form is chemotactic for T-cells and monocytes, but not for neutrophils. The membrane-bound form promotes adhesion of those leukocytes to endothelial cells. May play a role in regulating leukocyte adhesion and migration processes at the endothelium. Binds to CX3CR1.
組織特異性	Small intestine, colon, testis, prostate, heart, brain, lung, skeletal muscle, kidney and pancreas.
配列類似性	Belongs to the intercrine delta family.
翻訳後修飾	A soluble short 95 kDa form may be released by proteolytic cleavage from the long membrane-anchored form. O-glycosylated with core 1 or possibly core 8 glycans.
細胞内局在	Secreted and Cell membrane.

画像



Anti-CX3CL1 antibody [MM0207-8J23] (ab89229) at 1/500 dilution
+ Human placenta tissue lysate

Predicted band size: 42 kDa

Observed band size: 35 kDa

Please note: All products are "FOR RESEARCH USE ONLY. NOT FOR USE IN DIAGNOSTIC PROCEDURES"

Our Abpromise to you: Quality guaranteed and expert technical support

- Replacement or refund for products not performing as stated on the datasheet
- Valid for 12 months from date of delivery
- Response to your inquiry within 24 hours

- We provide support in Chinese, English, French, German, Japanese and Spanish
- Extensive multi-media technical resources to help you
- We investigate all quality concerns to ensure our products perform to the highest standards

If the product does not perform as described on this datasheet, we will offer a refund or replacement. For full details of the Abpromise, please visit <https://www.abcam.co.jp/abpromise> or contact our technical team.

Terms and conditions

- Guarantee only valid for products bought direct from Abcam or one of our authorized distributors