

Anti-Cullin 4B/CUL-4B antibody ab67035

★★★★☆ [4 Abreviews](#) [11 References](#) [画像数 3](#)

製品の概要

製品名	Anti-Cullin 4B/CUL-4B antibody
製品の詳細	Mouse polyclonal to Cullin 4B/CUL-4B
由来種	Mouse
アプリケーション	適用あり: WB, ICC/IF
種交差性	交差種: Human
免疫原	Recombinant full length protein within Human Cullin 4B/CUL-4B. The exact immunogen sequence used to generate this antibody is proprietary information. If additional detail on the immunogen is needed to determine the suitability of the antibody for your needs, please contact our Scientific Support team to discuss your requirements. (NP_003579, 1 a.a. ~ 913 a.a)
ポジティブ・コントロール	WB: Transfected 293T cell lysate ICC/IF: HeLa cells
特記事項	<p>The Life Science industry has been in the grips of a reproducibility crisis for a number of years. Abcam is leading the way in addressing this with our range of recombinant monoclonal antibodies and knockout edited cell lines for gold-standard validation. Please check that this product meets your needs before purchasing.</p> <p>If you have any questions, special requirements or concerns, please send us an inquiry and/or contact our Support team ahead of purchase. Recommended alternatives for this product can be found below, along with publications, customer reviews and Q&As</p>

製品の特性

製品の状態	Liquid
保存方法	Shipped at 4°C. Upon delivery aliquot and store at -20°C or -80°C. Avoid repeated freeze / thaw cycles.
バッファー	pH: 7.40 Constituent: 100% PBS
精製度	Protein G purified
ポリ/モノ	ポリクローナル
アイソタイプ	IgG

アプリケーション

The Abpromise guarantee

Abpromise保証は、次のテスト済みアプリケーションにおけるab67035の使用に適用されません

アプリケーションノートには、推奨の開始希釈率がありますが、適切な希釈率につきましてはご検討ください。

アプリケーション	Abreviews	特記事項
WB	★★★★☆ (2)	
ICC/IF	★★★★☆ (1)	

追加情報

ICC/IF: Use at a concentration of 10 µg/ml.

Note: ab67035 requires Protein A affinity purification prior to ICC/IF application.

WB: 1/500 - 1/1000. Detects a band of approximately 99 kDa (predicted molecular weight: 103 kDa).

Not yet tested in other applications.

Optimal dilutions/concentrations should be determined by the end user.

ターゲット情報

機能

Core component of multiple cullin-RING-based E3 ubiquitin-protein ligase complexes which mediate the ubiquitination and subsequent proteasomal degradation of target proteins. The functional specificity of the E3 ubiquitin-protein ligase complex depends on the variable substrate recognition subunit. CUL4B may act within the complex as a scaffold protein, contributing to catalysis through positioning of the substrate and the ubiquitin-conjugating enzyme. Plays a role as part of the E3 ubiquitin-protein ligase complex in polyubiquitination of CDT1, histone H2A, histone H3 and histone H4 in response to radiation-induced DNA damage. Targeted to UV damaged chromatin by DDB2 and may be important for DNA repair and DNA replication. Required for ubiquitination of cyclin E, and consequently, normal G1 cell cycle progression. Regulates the mammalian target-of-rapamycin (mTOR) pathway involved in control of cell growth, size and metabolism. Specific CUL4B regulation of the mTORC1-mediated pathway is dependent upon 26S proteasome function and requires interaction between CUL4B and MLST8.

パスウェイ

Protein modification; protein ubiquitination.

関連疾患

Defects in CUL4B are the cause of mental retardation syndromic X-linked Cabezas type (MRXC) [MIM:300354]; also known as mental retardation syndromic X-linked type 15. A syndromic form of X-linked mental retardation characterized by severe intellectual deficit associated with short stature, craniofacial dysmorphism, small testes, muscle wasting in lower legs, kyphosis, joint hyperextensibility, pes cavus, small feet, and abnormalities of the toes. Additional neurologic manifestations include speech delay and impairment, tremor, seizures, gait ataxia, hyperactivity and decreased attention span.

配列類似性

Belongs to the cullin family.

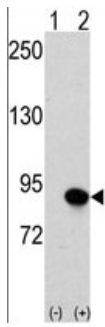
翻訳後修飾

Neddylated. Deneddylated via its interaction with the COP9 signalosome (CSN) complex.

細胞内局在

Nucleus.

画像



Western blot - Anti-Cullin 4B/CUL-4B antibody (ab67035)

All lanes : Anti-Cullin 4B/CUL-4B antibody (ab67035) at 1/500 dilution

Lane 1 : Transfected 293T cell lysate

Lane 2 : non Transfected 293T cell lysate

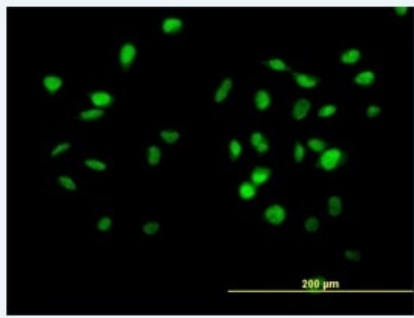
Lysates/proteins at 25 µg per lane.

Secondary

All lanes : Goat Anti-Mouse IgG (H&L)-HRP Conjugate at 1/5000 dilution

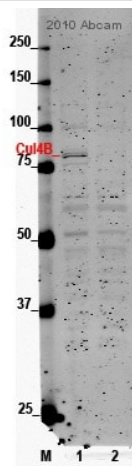
Predicted band size: 103 kDa

Observed band size: 99 kDa



Immunocytochemistry/ Immunofluorescence - Anti-Cullin 4B/CUL-4B antibody (ab67035)

ab67035, at a concentration 10 µg/ml, staining Cullin 4B/CUL-4B in HeLa cell by Immunofluorescence.



Western blot - Anti-Cullin 4B/CUL-4B antibody
(ab67035)

This image is courtesy of an Abreview submitted by
Svetlana Khoronenkova

All lanes : Anti-Cullin 4B/CUL-4B antibody (ab67035) at 1/500 dilution (Blocker 1:1 in PBS + 0.1% Tween for 14 hours at 4°C)

Lane 1 : HeLa whole cell lysate

Lane 2 : Cul4 siRNA in HeLa whole cell lysate

Lysates/proteins at 30 µg per lane.

Secondary

All lanes : An Alexa Fluor®680-conjugated Goat anti-mouse polyclonal at 1/10000 dilution

Predicted band size: 103 kDa

Blocking Step: LI-COR® Odyssey® Blocking Buffer (50%) for 45 minutes at room temperature.

Please note: All products are "FOR RESEARCH USE ONLY. NOT FOR USE IN DIAGNOSTIC PROCEDURES"

Our Abpromise to you: Quality guaranteed and expert technical support

- Replacement or refund for products not performing as stated on the datasheet
- Valid for 12 months from date of delivery
- Response to your inquiry within 24 hours
- We provide support in Chinese, English, French, German, Japanese and Spanish
- Extensive multi-media technical resources to help you
- We investigate all quality concerns to ensure our products perform to the highest standards

If the product does not perform as described on this datasheet, we will offer a refund or replacement. For full details of the Abpromise, please visit <https://www.abcam.co.jp/abpromise> or contact our technical team.

Terms and conditions

- Guarantee only valid for products bought direct from Abcam or one of our authorized distributors