

Anti-Cullin 2/CUL-2 antibody [EPR3104(2)] ab166917

リコンビナント **RabMAb**

★★★★★ **3 Abreviews** **20 References** 画像数 5

製品の概要

製品名	Anti-Cullin 2/CUL-2 antibody [EPR3104(2)]
製品の詳細	Rabbit monoclonal [EPR3104(2)] to Cullin 2/CUL-2
由来種	Rabbit
アプリケーション	適用あり: Flow Cyt (Intra), WB, IP 適用なし: ICC/IF or IHC-P
種交差性	交差種: Mouse, Rat, Human
免疫原	Synthetic peptide within Human Cullin 2/CUL-2 aa 1-100. The exact sequence is proprietary. Database link: Q13617
ポジティブ・コントロール	WB: PC3, 293T, HeLa, Raji cell lysates; mouse and rat brain, heart, kidney and spleen lysates. Flow Cyt (intra): 293T cells.
特記事項	This product is a recombinant monoclonal antibody, which offers several advantages including: <ul style="list-style-type: none"> - High batch-to-batch consistency and reproducibility - Improved sensitivity and specificity - Long-term security of supply - Animal-free production For more information see here . Our RabMAb [®] technology is a patented hybridoma-based technology for making rabbit monoclonal antibodies. For details on our patents, please refer to RabMAb[®] patents .

製品の特性

製品の状態	Liquid
保存方法	Shipped at 4°C. Upon delivery aliquot and store at -20°C. Avoid repeated freeze / thaw cycles.
バッファー	pH: 7.2 Preservative: 0.01% Sodium azide Constituents: 9% PBS, 40% Glycerol (glycerin, glycerine), 0.05% BSA, 50% Tissue culture supernatant
精製度	Protein A purified
ポリ/モノ	モノクローナル
クローン名	EPR3104(2)

アイソタイプ

IgG

アプリケーション

The Abpromise guarantee **Abpromise保証は、次のテスト済みアプリケーションにおけるab166917の使用に適用されます**
アプリケーションノートには、推奨の開始希釈率がありますが、適切な希釈率につきましてはご検討ください。

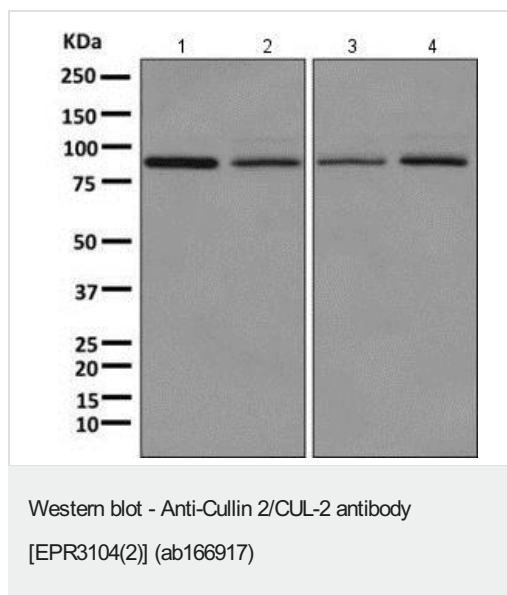
アプリケーション	Abreviews	特記事項
Flow Cyt (Intra)		1/100.
WB	★★★★★ (2)	1/1000 - 1/10000. Predicted molecular weight: 87 kDa.
IP	★★★★★ (1)	1/10 - 1/100.

追加情報 Is unsuitable for ICC/IF or IHC-P.

ターゲット情報

機能	Core component of multiple cullin-RING-based ECS (ElonginB/C-CUL2/5-SOCS-box protein) E3 ubiquitin-protein ligase complexes, which mediate the ubiquitination of target proteins. May serve as a rigid scaffold in the complex and may contribute to catalysis through positioning of the substrate and the ubiquitin-conjugating enzyme. The E3 ubiquitin-protein ligase activity of the complex is dependent on the neddylation of the cullin subunit and is inhibited by the association of the deneddylated cullin subunit with TIP120A/CAND1 (By similarity). The functional specificity of the ECS complex depends on the substrate recognition component. ECS(VHL) mediates the ubiquitination of hypoxia-inducible factor (HIF).
パスウェイ	Protein modification; protein ubiquitination.
配列類似性	Belongs to the cullin family.
翻訳後修飾	CBC(VHL) complex formation seems to promote neddylation. Deneddylated via its interaction with the COP9 signalosome (CSN) complex.

画像



All lanes : Anti-Cullin 2/CUL-2 antibody [EPR3104(2)] (ab166917) at 1/1000 dilution

Lane 1 : PC3 cell lysate

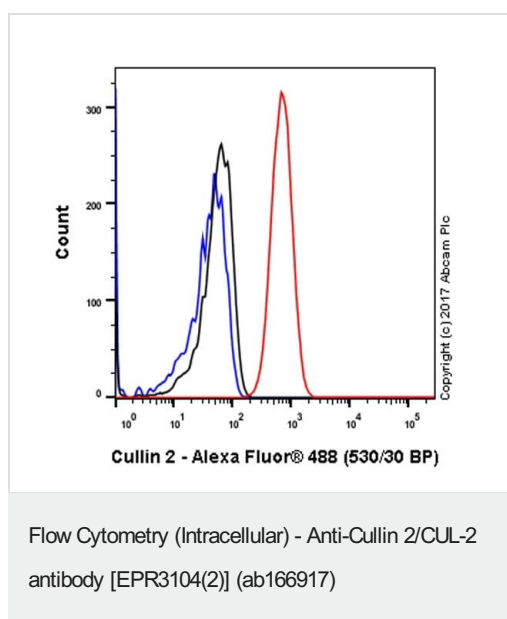
Lane 2 : 293T cell lysate

Lane 3 : HeLa cell lysate

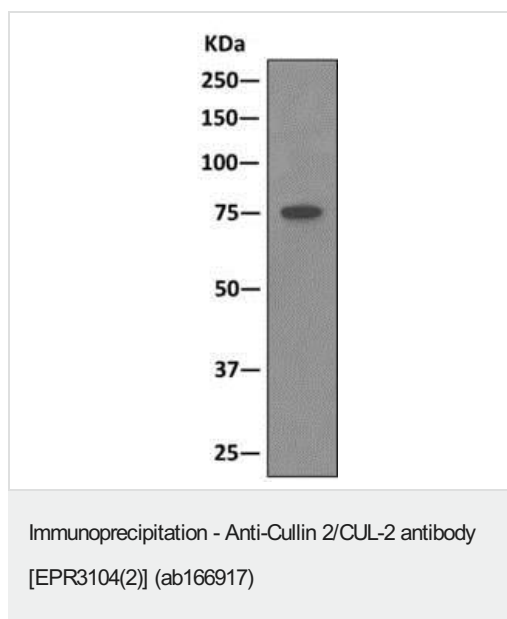
Lane 4 : Raji cell lysate

Lysates/proteins at 10 µg per lane.

Predicted band size: 87 kDa

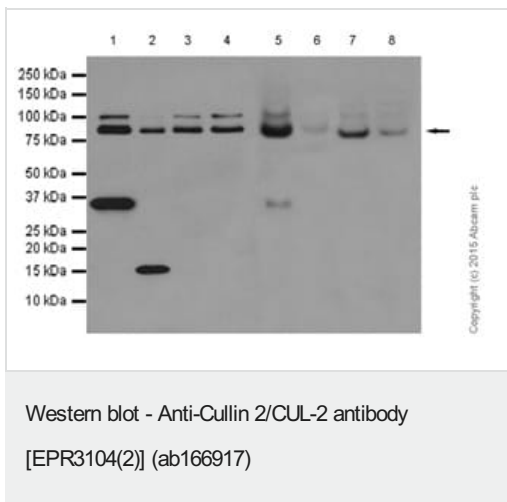


Intracellular Flow Cytometry analysis of 293T (Human embryonic kidney epithelial cell) cells labeling Cullin 2/CUL-2 (red) with ab166917 at a 1/100 dilution. Cells were fixed with 4% paraformaldehyde and permeabilized with 90% methanol. A goat anti-rabbit IgG (Alexa Fluor® 488) (**ab150077**) was used as the secondary antibody at a 1/2000 dilution. Black - Rabbit monoclonal IgG (**ab172730**). Blue (unlabeled control) - Cells without incubation with the primary and secondary antibodies.



Western blot analysis of an immunoprecipitation pellet from Raji cell lysate labeling Cullin 2/CUL-2 with ab166917 which was used at 1/10 dilution for immunoprecipitation.

Secondary antibody used was an HRP-conjugated anti-rabbit IgG preferentially detecting the non-reduced form of rabbit IgG.



All lanes : Anti-Cullin 2/CUL-2 antibody [EPR3104(2)] (ab166917) at 1/2000 dilution

Lane 1 : Mouse brain lysate

Lane 2 : Mouse heart lysate

Lane 3 : Mouse kidney lysate

Lane 4 : Mouse spleen lysate

Lane 5 : Rat brain lysate

Lane 6 : Rat heart lysate

Lane 7 : Rat kidney lysate

Lane 8 : Rat spleen lysate

Lysates/proteins at 10 µg per lane.

Secondary

All lanes : Goat Anti-Rabbit IgG H&L (HRP) (**ab97051**) at 1/20000 dilution

Predicted band size: 87 kDa

Exposure time: 3 minutes

Blocking and Diluting buffer: 5% NFDM/TBST

Why choose a recombinant antibody?

Research with confidence
Consistent and reproducible results

Long-term and scalable supply
Recombinant technology

Success from the first experiment
Confirmed specificity

Ethical standards compliant
Animal-free production

Anti-Cullin 2/CUL-2 antibody [EPR3104(2)] (ab166917)

Please note: All products are "FOR RESEARCH USE ONLY. NOT FOR USE IN DIAGNOSTIC PROCEDURES"

Our Abpromise to you: Quality guaranteed and expert technical support

- Replacement or refund for products not performing as stated on the datasheet
- Valid for 12 months from date of delivery
- Response to your inquiry within 24 hours

- We provide support in Chinese, English, French, German, Japanese and Spanish
- Extensive multi-media technical resources to help you
- We investigate all quality concerns to ensure our products perform to the highest standards

If the product does not perform as described on this datasheet, we will offer a refund or replacement. For full details of the Abpromise, please visit <https://www.abcam.co.jp/abpromise> or contact our technical team.

Terms and conditions

- Guarantee only valid for products bought direct from Abcam or one of our authorized distributors