


### Anti-Cullin 1/CUL-1 antibody [EPR3102Y] ab75812

リコンビナント **RabMAb**

★★★★★ **1 Abreviews** **6 References** 画像数 4

#### 製品の概要

製品名	Anti-Cullin 1/CUL-1 antibody [EPR3102Y]
製品の詳細	Rabbit monoclonal [EPR3102Y] to Cullin 1/CUL-1
由来種	Rabbit
アプリケーション	<b>適用あり:</b> WB, ICC/IF <b>適用なし:</b> IHC-P or IP
種交差性	<b>交差種:</b> Human <b>交差が予測される動物種:</b> Mouse, Rat 
免疫原	Synthetic peptide within Human Cullin 1/CUL-1 aa 200-300. The exact sequence is proprietary.
ポジティブ・コントロール	293T, A549 and T47D cell lysates; HeLa cells.
特記事項	This product is a recombinant monoclonal antibody, which offers several advantages including: <ul style="list-style-type: none"> <li>- High batch-to-batch consistency and reproducibility</li> <li>- Improved sensitivity and specificity</li> <li>- Long-term security of supply</li> <li>- Animal-free production</li> </ul> For more information <b><a href="#">see here</a></b> . Our RabMAb <sup>®</sup> technology is a patented hybridoma-based technology for making rabbit monoclonal antibodies. For details on our patents, please refer to <b><a href="#">RabMAb<sup>®</sup> patents</a></b> .

#### 製品の特性

製品の状態	Liquid
保存方法	Shipped at 4°C. Upon delivery aliquot and store at -20°C. Avoid repeated freeze / thaw cycles.
バッファー	pH: 7.20 Preservative: 0.05% Sodium azide Constituents: 0.1% BSA, 40% Glycerol (glycerin, glycerine), 9.85% Tris glycine, 50% Tissue culture supernatant
精製度	Protein A purified
ポリ/モノ	モノクローナル
クローン名	EPR3102Y

アイソタイプIgG

アプリケーション

The Abpromise guarantee      **Abpromise保証は、** 次のテスト済みアプリケーションにおけるab75812の使用に適用されます  
アプリケーションノートには、推奨の開始希釈率がありますが、適切な希釈率につきましてはご検討ください。

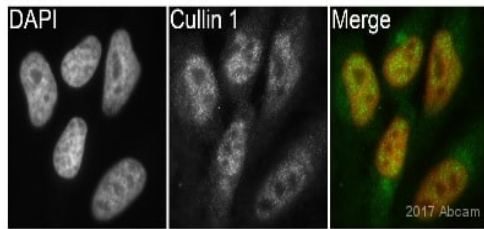
アプリケーション	Abreviews	特記事項
WB		1/1000 - 1/2000. Predicted molecular weight: 90 kDa.
ICC/IF	★★★★★ (1)	1/100 - 1/250.

追加情報      Is unsuitable for IHC-P or IP.

ターゲット情報

機能	<p>Core component of multiple cullin-RING-based SCF (SKP1-CUL1-F-box protein) E3 ubiquitin-protein ligase complexes, which mediate the ubiquitination of proteins involved in cell cycle progression, signal transduction and transcription. In the SCF complex, serves as a rigid scaffold that organizes the SKP1-F-box protein and RBX1 subunits. May contribute to catalysis through positioning of the substrate and the ubiquitin-conjugating enzyme. The E3 ubiquitin-protein ligase activity of the complex is dependent on the neddylation of the cullin subunit and is inhibited by the association of the deneddylated cullin subunit with TIP120A/CAND1. The functional specificity of the SCF complex depends on the F-box protein as substrate recognition component.</p> <p>SCF(BTRC) and SCF(FBXW11) direct ubiquitination of CTNNB1 and participate in Wnt signaling. SCF(FBXW11) directs ubiquitination of phosphorylated NFKBIA. SCF(BTRC) directs ubiquitination of NFKBIB, NFKBIE, ATF4, SMAD3, SMAD4, CDC25A, FBXO5 and probably NFKB2. SCF(SKP2) directs ubiquitination of phosphorylated CDKN1B/p27kip and is involved in regulation of G1/S transition. SCF(SKP2) directs ubiquitination of ORC1, CDT1, RBL2, ELF4, CDKN1A, RAG2, FOXO1A, and probably MYC and TAL1. SCF(FBXW7) directs ubiquitination of cyclin E, NOTCH1 released notch intracellular domain (NICD), and probably PSEN1. SCF(FBXW2) directs ubiquitination of GCM1. SCF(FBXO32) directs ubiquitination of MYOD1. SCF(FBXO7) directs ubiquitination of BIRC2 and DLGAP5. SCF(FBXO33) directs ubiquitination of YBX1. SCF(FBXO11) does not seem to direct ubiquitination of TP53. SCF(BTRC) mediates the ubiquitination of NFKBIA at 'Lys-21' and 'Lys-22'; the degradation frees the associated NFKB1-RELA dimer to translocate into the nucleus and to activate transcription. SCF(Cyclin F) directs ubiquitination of CP110.</p>
組織特異性	Expressed in lung fibroblasts.
パスウェイ	Protein modification; protein ubiquitination.
配列類似性	Belongs to the cullin family.
翻訳後修飾	Neddylated; which enhances the ubiquitination activity of SCF. Deneddylated via its interaction with the COP9 signalosome (CSN) complex. Deneddylated by Epstein-Barr virus BPLF1 leading to a S-phase-like environment that is required for efficient replication of the viral genome.

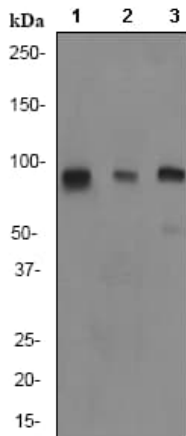
画像



Immunocytochemistry/ Immunofluorescence - Anti-Cullin 1/CUL-1 antibody [EPR3102Y] (ab75812)

This image is courtesy of an Abreview submitted by Kirk McManus, Univ. of Manitoba/Cancer Care MCB.

Immunocytochemistry/ Immunofluorescence analysis of HeLa cells labeling Cullin 1/CUL-1 with ab75812 at 1/400 dilution. Cells were fixed in paraformaldehyde and permeabilized with 0.5% Triton X-100 in PBS. Staining with ab75812 at 1/400 was carried in PBS buffer for 1 hour at 22°C. **ab150081**, a Goat Anti-Rabbit IgG H&L (Alexa Fluor® 488) preadsorbed secondary antibody was used at 1/200 dilution. DAPI was used to counterstain.



Western blot - Anti-Cullin 1/CUL-1 antibody [EPR3102Y] (ab75812)

**All lanes :** Anti-Cullin 1/CUL-1 antibody [EPR3102Y] (ab75812) at 1/2000 dilution

**Lane 1 :** 293T cell lysate

**Lane 2 :** A549 cell lysate

**Lane 3 :** T47D cell lysate

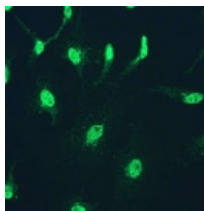
Lysates/proteins at 10 µg per lane.

#### Secondary

**All lanes :** goat anti-rabbit HRP at 1/2000 dilution

**Predicted band size:** 90 kDa

**Observed band size:** 90 kDa



Immunocytochemistry/ Immunofluorescence - Anti-Cullin 1/CUL-1 antibody [EPR3102Y] (ab75812)

ab75812 at 1/100 dilution staining Cullin 1/CUL-1 in HeLa cells by Immunofluorescence.

### Why choose a recombinant antibody?



**Research with confidence**  
Consistent and reproducible results



**Long-term and scalable supply**  
Recombinant technology



**Success from the first experiment**  
Confirmed specificity



**Ethical standards compliant**  
Animal-free production

Anti-Cullin 1/CUL-1 antibody [EPR3102Y] (ab75812)

**Please note:** All products are "FOR RESEARCH USE ONLY. NOT FOR USE IN DIAGNOSTIC PROCEDURES"

### Our Abpromise to you: Quality guaranteed and expert technical support

---

- Replacement or refund for products not performing as stated on the datasheet
- Valid for 12 months from date of delivery
- Response to your inquiry within 24 hours
- We provide support in Chinese, English, French, German, Japanese and Spanish
- Extensive multi-media technical resources to help you
- We investigate all quality concerns to ensure our products perform to the highest standards

If the product does not perform as described on this datasheet, we will offer a refund or replacement. For full details of the Abpromise, please visit <https://www.abcam.co.jp/abpromise> or contact our technical team.

### Terms and conditions

---

- Guarantee only valid for products bought direct from Abcam or one of our authorized distributors