

Anti-CUL-4A + CUL-4B antibody [EPR3200] ab76470

リコンビナント **RabMAb**

6 References [画像数 3](#)

製品の概要

製品名	Anti-CUL-4A + CUL-4B antibody [EPR3200]
製品の詳細	Rabbit monoclonal [EPR3200] to CUL-4A + CUL-4B
由来種	Rabbit
特異性	Due to the close homology between Cullin 4A and 4B this antibody is likely to react with both forms.
アプリケーション	適用あり: WB, IHC-P 適用なし: ICC/IF or IP
種交差性	交差種: Mouse, Rat, Human
免疫原	Synthetic peptide within Human CUL-4A + CUL-4B aa 850-950. The exact sequence is proprietary.
ポジティブ・コントロール	Fetal uterus, HeLa, A375 and fetal testis lysates and human brain tissue
特記事項	This product is a recombinant monoclonal antibody, which offers several advantages including: <ul style="list-style-type: none"> - High batch-to-batch consistency and reproducibility - Improved sensitivity and specificity - Long-term security of supply - Animal-free production For more information see here . Our RabMAb [®] technology is a patented hybridoma-based technology for making rabbit monoclonal antibodies. For details on our patents, please refer to RabMAb[®] patents .

製品の特性

製品の状態	Liquid
保存方法	Shipped at 4°C. Upon delivery aliquot and store at -20°C. Avoid freeze / thaw cycles.
バッファー	pH: 7.20 Preservative: 0.05% Sodium azide Constituents: 0.1% BSA, 40% Glycerol (glycerin, glycerine), 9.85% Tris glycine, 50% Tissue culture supernatant
精製度	Protein A purified
ポリ/モノ	モノクローナル

クローン名 EPR3200
アイソタイプ IgG

アプリケーション

The Abpromise guarantee **Abpromise保証は、次のテスト済みアプリケーションにおけるab76470の使用に適用されます**
アプリケーションノートには、推奨の開始希釈率がありますが、適切な希釈率につきましてはご検討ください。

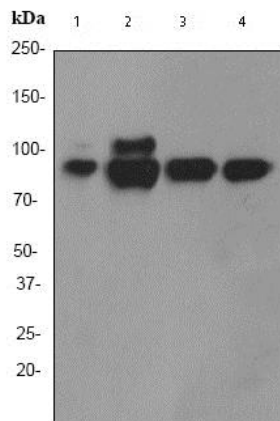
アプリケーション	Abreviews	特記事項
WB		1/2000 - 1/10000. Detects a band of approximately 88, 102 kDa (predicted molecular weight: 102 kDa).
IHC-P		1/100 - 1/250. Perform heat mediated antigen retrieval before commencing with IHC staining protocol. Use of HRP-conjugated or polymerized HRP secondary antibodies, stronger signals have been found using the polymerized HRP secondary.

追加情報 Is unsuitable for ICC/IF or IP.

ターゲット情報

関連性 Core component of multiple cullin-RING-based E3 ubiquitin-protein ligase complexes which mediate the ubiquitination and subsequent proteasomal degradation of target proteins. As a scaffold protein may contribute to catalysis through positioning of the substrate and the ubiquitin-conjugating enzyme. The E3 ubiquitin-protein ligase activity of the complex is dependent on the neddylation of the cullin subunit and is inhibited by the association of the deneddylated cullin subunit with TIP120A/CAND1. The functional specificity of the E3 ubiquitin-protein ligase complex depends on the variable substrate recognition component.

画像



Western blot - Anti-CUL-4A + CUL-4B antibody
[EPR3200] (ab76470)

All lanes : Anti-CUL-4A + CUL-4B antibody [EPR3200] (ab76470)
at 1/5000 dilution

Lane 1 : Fetal uterus lysate

Lane 2 : HeLa lysate

Lane 3 : A375 lysate

Lane 4 : Fetal testis lysate

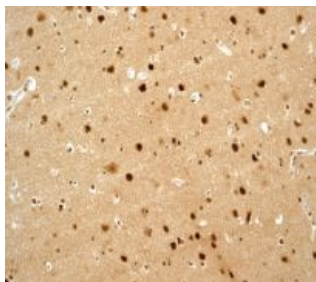
Lysates/proteins at 10 µg per lane.

Secondary

All lanes : HRP labelled goat anti-rabbit at 1/2000 dilution

Predicted band size: 102 kDa

Observed band size: 102,88 kDa



Immunohistochemistry (Formalin/PFA-fixed paraffin-
embedded sections) - Anti-CUL-4A + CUL-4B
antibody [EPR3200] (ab76470)

ab76470 at 1/100 dilution staining Cullin 4B in human brain tissue,
using a HRP/AP polymerized secondary antibody.

Perform heat mediated antigen retrieval before commencing with
IHC staining protocol.

Why choose a recombinant antibody?



**Research with
confidence**
Consistent and
reproducible results



**Long-term and
scalable supply**
Recombinant
technology



**Success from the
first experiment**
Confirmed
specificity



**Ethical standards
compliant**
Animal-free
production

Anti-CUL-4A + CUL-4B antibody [EPR3200]
(ab76470)

Our Abpromise to you: Quality guaranteed and expert technical support

- Replacement or refund for products not performing as stated on the datasheet
- Valid for 12 months from date of delivery
- Response to your inquiry within 24 hours

- We provide support in Chinese, English, French, German, Japanese and Spanish
- Extensive multi-media technical resources to help you
- We investigate all quality concerns to ensure our products perform to the highest standards

If the product does not perform as described on this datasheet, we will offer a refund or replacement. For full details of the Abpromise, please visit <https://www.abcam.co.jp/abpromise> or contact our technical team.

Terms and conditions

- Guarantee only valid for products bought direct from Abcam or one of our authorized distributors