

# Anti-CTRP6 antibody ab36898

画像数 3

### 製品の概要

---

製品名	Anti-CTRP6 antibody
製品の詳細	Rabbit polyclonal to CTRP6
由来種	Rabbit
アプリケーション	<b>適用あり:</b> ICC/IF, WB
種交差性	<b>交差種:</b> Human
免疫原	A 15 amino acid peptide from near the carboxy-terminus of human CTRP6.
ポジティブ・コントロール	HeLa whole cell lysate ( <a href="#">ab150035</a> )
特記事項	<p>The Life Science industry has been in the grips of a reproducibility crisis for a number of years. Abcam is leading the way in addressing this with our range of recombinant monoclonal antibodies and knockout edited cell lines for gold-standard validation. Please check that this product meets your needs before purchasing.</p> <p>If you have any questions, special requirements or concerns, please send us an inquiry and/or contact our Support team ahead of purchase. Recommended alternatives for this product can be found below, along with publications, customer reviews and Q&amp;As</p>

### 製品の特性

---

製品の状態	Liquid
保存方法	Shipped at 4°C. Store at +4°C.
バッファー	pH: 7.2 Preservative: 0.02% Sodium azide Constituent: PBS
精製度	Immunogen affinity purified
ポリ/モノ	ポリクローナル
アイソタイプ	IgG

### アプリケーション

---

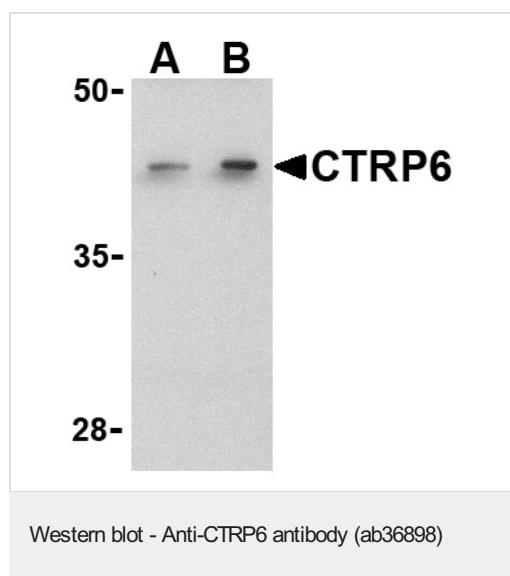
**The Abpromise guarantee**      **Abpromise保証は、次のテスト済みアプリケーションにおけるab36898の使用に適用されます**  
アプリケーションノートには、推奨の開始希釈率がありますが、適切な希釈率につきましてはご検討ください。

アプリケーション	Abreviews	特記事項
ICC/IF		Use a concentration of 10 µg/ml.
WB		Use a concentration of 1 µg/ml. Predicted molecular weight: 29 kDa.

## ターゲット情報

配列類似性	Contains 1 C1q domain. Contains 1 collagen-like domain.
細胞内局在	Secreted.

## 画像



**Lane 1 :** Anti-CTRP6 antibody (ab36898) at 1 µg/ml

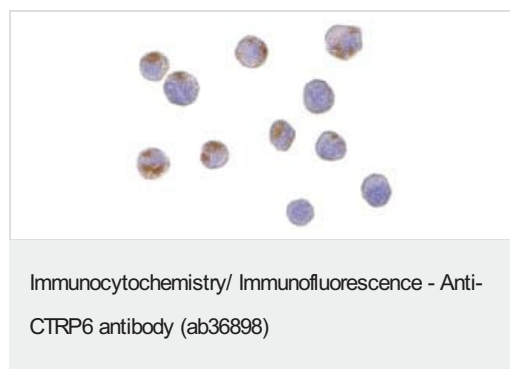
**Lane 2 :** Anti-CTRP6 antibody (ab36898) at 2 µg/ml

**All lanes :** HeLa cell lysate.

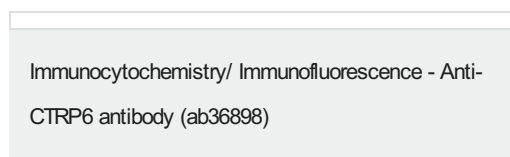
**Predicted band size:** 29 kDa

**Observed band size:** 42 kDa

These proteins often migrate in SDS-PAGE at positions other than their predicted size.



ab36898 at 10µg/ml staining CTRP6 in HeLa cells by ICC/IF



Immunofluorescence of CTRP6 in HeLa cells using ab36898 at 20 µg/ml.

**Please note:** All products are "FOR RESEARCH USE ONLY. NOT FOR USE IN DIAGNOSTIC PROCEDURES"

### **Our Abpromise to you: Quality guaranteed and expert technical support**

---

- Replacement or refund for products not performing as stated on the datasheet
- Valid for 12 months from date of delivery
- Response to your inquiry within 24 hours
  
- We provide support in Chinese, English, French, German, Japanese and Spanish
- Extensive multi-media technical resources to help you
- We investigate all quality concerns to ensure our products perform to the highest standards

If the product does not perform as described on this datasheet, we will offer a refund or replacement. For full details of the Abpromise, please visit <https://www.abcam.co.jp/abpromise> or contact our technical team.

### **Terms and conditions**

---

- Guarantee only valid for products bought direct from Abcam or one of our authorized distributors