

Anti-CTRP4 antibody ab36871

3 References [画像数 3](#)

製品の概要

製品名	Anti-CTRP4 antibody
製品の詳細	Rabbit polyclonal to CTRP4
由来種	Rabbit
アプリケーション	適用あり: WB, IHC-P, ICC/IF
種交差性	交差種: Rat
免疫原	A 16 amino acid peptide from near the carboxy terminus of human CTRP4.
ポジティブ・コントロール	Rat brain cell lysate.
特記事項	<p>The Life Science industry has been in the grips of a reproducibility crisis for a number of years. Abcam is leading the way in addressing this with our range of recombinant monoclonal antibodies and knockout edited cell lines for gold-standard validation. Please check that this product meets your needs before purchasing.</p> <p>If you have any questions, special requirements or concerns, please send us an inquiry and/or contact our Support team ahead of purchase. Recommended alternatives for this product can be found below, along with publications, customer reviews and Q&As</p>

製品の特性

製品の状態	Liquid
保存方法	Shipped at 4°C. Store at +4°C.
バッファー	pH: 7.2 Preservative: 0.02% Sodium azide Constituent: PBS
精製度	Immunogen affinity purified
ポリ/モノ	ポリクローナル
アイソタイプ	IgG

アプリケーション

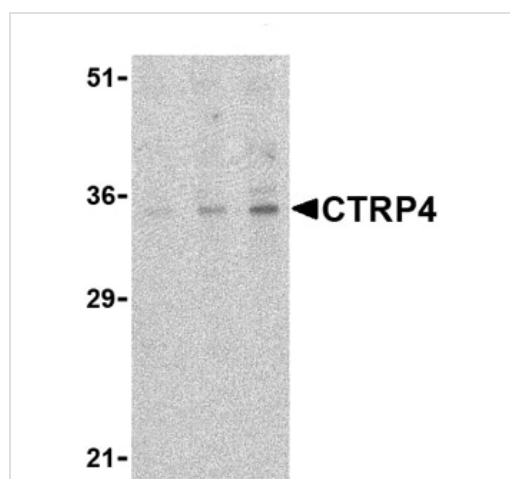
The Abpromise guarantee **Abpromise保証は、次のテスト済みアプリケーションにおけるab36871の使用に適用されます**
 アプリケーションノートには、推奨の開始希釈率がありますが、適切な希釈率につきましてはご検討ください。

アプリケーション	Abreviews	特記事項
WB		Use a concentration of 1 - 4 µg/ml. Detects a band of approximately 35 kDa (predicted molecular weight: 37 kDa).
IHC-P		Use a concentration of 10 µg/ml.
ICC/IF		Use a concentration of 20 µg/ml.

ターゲット情報

機能	May act as a pro-inflammatory cytokine, that induces the activation of NF-kappa-B signaling pathway and up-regulates IL6 production.
組織特異性	Widely expressed at low levels.
配列類似性	Contains 2 C1q domains.
細胞内局在	Secreted.

画像



Western blot - Anti-CTRP4 antibody (ab36871)

Lane 1 : Anti-CTRP4 antibody (ab36871) at 1 µg/ml

Lane 2 : Anti-CTRP4 antibody (ab36871) at 2 µg/ml

Lane 3 : Anti-CTRP4 antibody (ab36871) at 4 µg/ml

All lanes : Rat brain cell lysate

Lysates/proteins at 15 µg/ml per lane.

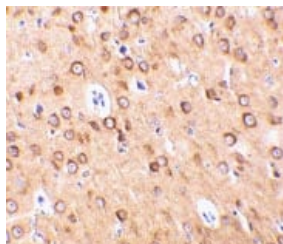
Secondary

All lanes : anti-rabbit IgG HRP at 1/10000 dilution

Predicted band size: 37 kDa

Observed band size: 35 kDa

Lanes read from left to right 1, 2 and 3. These proteins are often highly modified post-translationally and may migrate in SDS-PAGE at positions other than their predicted size.



Immunohistochemistry (Formalin/PFA-fixed paraffin-embedded sections) - Anti-CTRP4 antibody (ab36871)

ab36891 at 10µg/ml staining CTRP4 in rat brain by IHC

Immunocytochemistry/ Immunofluorescence - Anti-CTRP4 antibody (ab36871)

Immunofluorescence of CTRP4 in Rat Brain cells using ab36871 at 20 ug/ml.

Please note: All products are "FOR RESEARCH USE ONLY. NOT FOR USE IN DIAGNOSTIC PROCEDURES"

Our Abpromise to you: Quality guaranteed and expert technical support

- Replacement or refund for products not performing as stated on the datasheet
- Valid for 12 months from date of delivery
- Response to your inquiry within 24 hours
- We provide support in Chinese, English, French, German, Japanese and Spanish
- Extensive multi-media technical resources to help you
- We investigate all quality concerns to ensure our products perform to the highest standards

If the product does not perform as described on this datasheet, we will offer a refund or replacement. For full details of the Abpromise, please visit <https://www.abcam.co.jp/abpromise> or contact our technical team.

Terms and conditions

- Guarantee only valid for products bought direct from Abcam or one of our authorized distributors