


Anti-CTR9 antibody ab84487

★★★★★ [2 Abreviews](#) [2 References](#) [画像数 3](#)

製品の概要

製品名	Anti-CTR9 antibody
製品の詳細	Rabbit polyclonal to CTR9
由来種	Rabbit
アプリケーション	適用あり: IHC-P
種交差性	交差種: Mouse, Human 交差が予測される動物種: Rat, Chimpanzee, Rhesus monkey, Gorilla, Chinese hamster, Orangutan, Elephant 
免疫原	Synthetic peptide, corresponding to amino acids 1123-1173 of Human Paf1/RNA polymerase II complex component homolog CTR9 using the numbering given in entry NP_055448.1
特記事項	<p>The Life Science industry has been in the grips of a reproducibility crisis for a number of years. Abcam is leading the way in addressing this with our range of recombinant monoclonal antibodies and knockout edited cell lines for gold-standard validation. Please check that this product meets your needs before purchasing.</p> <p>If you have any questions, special requirements or concerns, please send us an inquiry and/or contact our Support team ahead of purchase. Recommended alternatives for this product can be found below, along with publications, customer reviews and Q&As</p>

製品の特性

製品の状態	Liquid
保存方法	Shipped at 4°C. Upon delivery aliquot and store at -20°C. Avoid freeze / thaw cycles.
バッファー	pH: 6.8 Preservative: 0.09% Sodium azide Constituents: 0.1% BSA, Tris buffered saline
精製度	Immunogen affinity purified
特記事項(精製)	Antibody was affinity purified using an epitope specific to CTR9 immobilized on solid support.
ポリ/モノ	ポリクローナル
アイソタイプ	IgG

アプリケーション

The Abpromise guarantee

Abpromise保証は、次のテスト済みアプリケーションにおけるab84487の使用に適用されます

アプリケーションノートには、推奨の開始希釈率がありますが、適切な希釈率につきましてはご検討ください。

アプリケーション	Abreviews	特記事項
IHC-P		1/100 - 1/500. Antigen retrieval is recommended: retrieval with citrate buffer will enhance staining. Likely to work with frozen sections

ターゲット情報

組織特異性

Widely expressed.

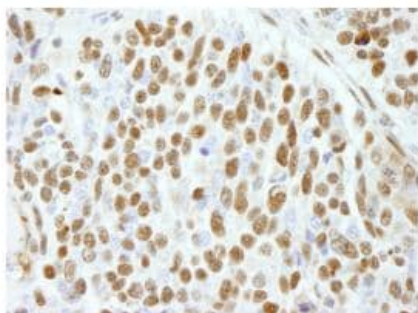
配列類似性

Contains 16 TPR repeats.

細胞内局在

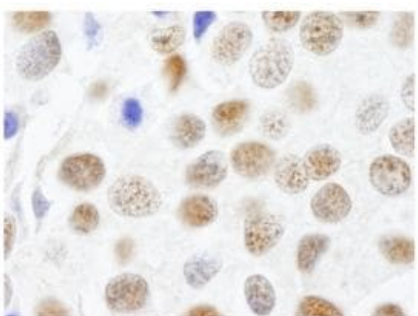
Nucleus speckle. Found in speckles.

画像



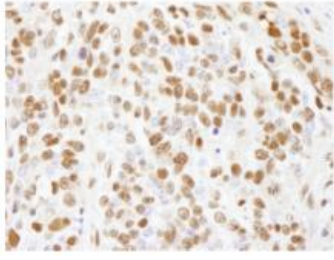
Immunohistochemistry (Formalin/PFA-fixed paraffin-embedded sections) - Anti-CTR9 antibody (ab84487)

ab84487 at 1/250 dilution staining formalin-fixed, paraffin-embedded section of human breast carcinoma by immunohistochemistry.
Detection: DAB staining.



Immunohistochemistry (Formalin/PFA-fixed paraffin-embedded sections) - Anti-CTR9 antibody (ab84487)

ab 84487 at 1/250 dilution staining formalin-fixed, paraffin-embedded section of human breast carcinoma by immunohistochemistry.
Detection: DAB staining



ab 84487 at 1/250 dilution staining formalin-fixed, paraffin-embedded section of mouse teratoma by immunohistochemistry.
Detection: DAB staining

Immunohistochemistry (Formalin/PFA-fixed paraffin-embedded sections) - Anti-CTR9 antibody (ab84487)

Please note: All products are "FOR RESEARCH USE ONLY. NOT FOR USE IN DIAGNOSTIC PROCEDURES"

Our Abpromise to you: Quality guaranteed and expert technical support

- Replacement or refund for products not performing as stated on the datasheet
- Valid for 12 months from date of delivery
- Response to your inquiry within 24 hours

- We provide support in Chinese, English, French, German, Japanese and Spanish
- Extensive multi-media technical resources to help you
- We investigate all quality concerns to ensure our products perform to the highest standards

If the product does not perform as described on this datasheet, we will offer a refund or replacement. For full details of the Abpromise, please visit <https://www.abcam.co.jp/abpromise> or contact our technical team.

Terms and conditions

- Guarantee only valid for products bought direct from Abcam or one of our authorized distributors