

### Anti-CTNNA1 antibody [EP1793Y] ab51032

KO 評価済 リコンビナント RabMAb

★★★★★ **8 Abreviews** **31 References** 画像数 7

#### 製品の概要

製品名	Anti-CTNNA1 antibody [EP1793Y]
製品の詳細	Rabbit monoclonal [EP1793Y] to CTNNA1
由来種	Rabbit
アプリケーション	<b>適用あり:</b> WB, IHC-P, IP <b>適用なし:</b> Flow Cyt or ICC/IF
種交差性	<b>交差種:</b> Mouse, Rat, Human
免疫原	Synthetic peptide. This information is proprietary to Abcam and/or its suppliers.
ポジティブ・コントロール	WB: Mouse heart and kidney lysate. Rat brain and kidney lysate. HeLa, A431 and HUVEC whole cell lysate. IHC-P: Rat and human stomach tissue and mouse liver tissue IP: HeLa (human cervix adenocarcinoma epithelial cell) whole cell lysate
特記事項	Our RabMAb <sup>®</sup> technology is a patented hybridoma-based technology for making rabbit monoclonal antibodies. For details on our patents, please refer to <a href="#">RabMAb<sup>®</sup> patents</a> .

#### 製品の特性

製品の状態	Liquid
保存方法	Shipped at 4°C. Upon delivery aliquot and store at -20°C. Avoid freeze / thaw cycles.
バッファー	pH: 7.20 Preservative: 0.01% Sodium azide Constituents: 59% PBS, 40% Glycerol (glycerin, glycerine), 0.5% BSA
精製度	Protein A purified
ポリ/モノ	モノクローナル
クローン名	EP1793Y
アイソタイプ	IgG

#### アプリケーション

The Abpromise guarantee Abpromise保証は、 次のテスト済みアプリケーションにおけるab51032の使用に適用されます

アプリケーションノートには、推奨の開始希釈率がありますが、適切な希釈率につきましてはご確認ください。

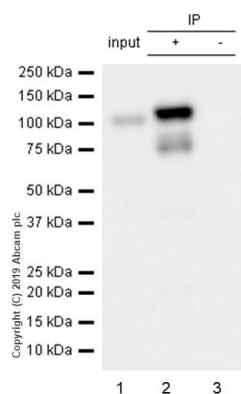
アプリケーション	Abreviews	特記事項
WB	★★★★★ (4)	1/10000. Detects a band of approximately 100 kDa (predicted molecular weight: 100 kDa).
IHC-P		1/100. Perform heat mediated antigen retrieval with citrate buffer pH 6 before commencing with IHC staining protocol.
IP		1/100.

追加情報 Is unsuitable for Flow Cyt or ICC/IF.

## ターゲット情報

機能	Associates with the cytoplasmic domain of a variety of cadherins. The association of catenins to cadherins produces a complex which is linked to the actin filament network, and which seems to be of primary importance for cadherins cell-adhesion properties. Can associate with both E- and N-cadherins. Originally believed to be a stable component of E-cadherin/catenin adhesion complexes and to mediate the linkage of cadherins to the actin cytoskeleton at adherens junctions. In contrast, cortical actin was found to be much more dynamic than E-cadherin/catenin complexes and CTNNA1 was shown not to bind to F-actin when assembled in the complex suggesting a different linkage between actin and adherens junctions components. The homodimeric form may regulate actin filament assembly and inhibit actin branching by competing with the Arp2/3 complex for binding to actin filaments. May play a crucial role in cell differentiation.
組織特異性	Expressed ubiquitously in normal tissues.
配列類似性	Belongs to the vinculin/alpha-catenin family.
翻訳後修飾	Sumoylated.
細胞内局在	Cell membrane and Cytoplasm > cytoskeleton. Cell junction > adherens junction. Cell membrane. Cell junction. Found at cell-cell boundaries and probably at cell-matrix boundaries.

## 画像



Immunoprecipitation - Anti-CTNNA1 antibody  
[EP1793Y] (ab51032)

**ab190685** at 1/100 dilution immunoprecipitating CTNNA1 in Jurkat HeLa (human cervix adenocarcinoma epithelial cell) whole cell lysates

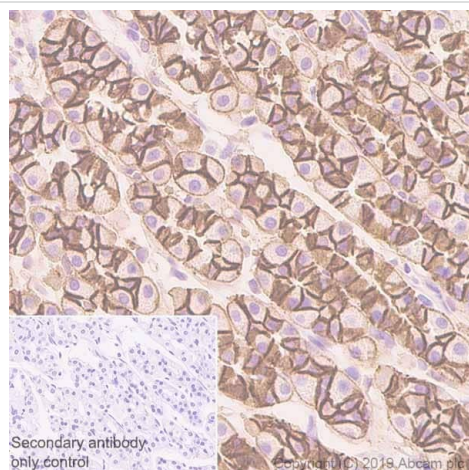
Lane 1 (input): HeLa (human cervix adenocarcinoma epithelial cell) whole cell lysate 10µg

Lane 2 (+): HeLa whole cell lysate

Lane 3 (-): Rabbit monoclonal IgG (**ab172730**) instead of ab51032 in HeLa whole cell lysate

For western blotting, ab51032 at 1/500 dilution and VeriBlot for IP Detection Reagent (HRP)(**ab131366**) at 1/1000 dilution were used.

Blocking and diluting buffer: 5% NFDM /TBST.



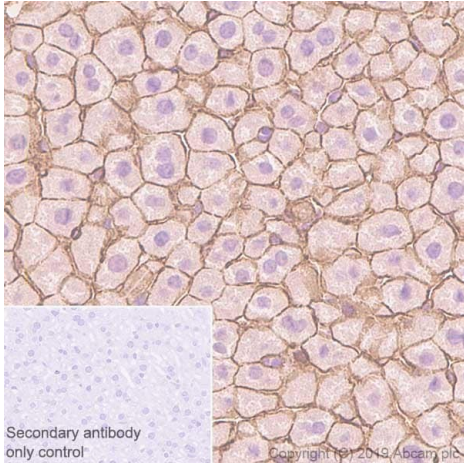
Immunohistochemistry (Formalin/PFA-fixed paraffin-embedded sections) - Anti-CTNNA1 antibody  
[EP1793Y] (ab51032)

Paraffin-embedded rat stomach tissue stained for CTNNA1 with ab51032 at a 1/100 dilution in immunohistochemical analysis. Rabbit specific IHC polymer detection kit HRP/DAB (**ab209101**) was used as a secondary antibody and Hematoxylin used as a counterstain. Heat mediated antigen retrieval with Tris-EDTA buffer (pH 9.0, epitope retrieval solution 2) was performed for 20 minutes.

Positive staining was seen on rat stomach.

The section was incubated with ab51032 for 30 minutes at room temperature.

The immunostaining staining was performed on a Leica Biosystems BOND® RX instrument.



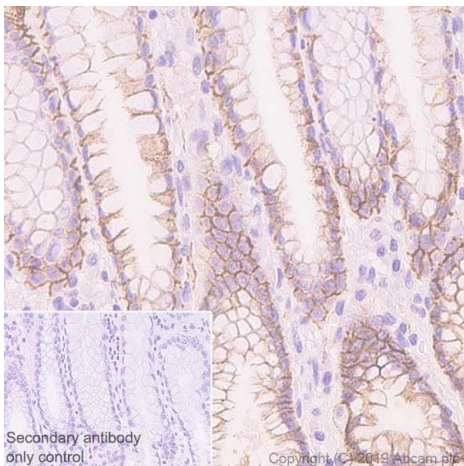
Immunohistochemistry (Formalin/PFA-fixed paraffin-embedded sections) - Anti-CTNNA1 antibody [EP1793Y] (ab51032)

Paraffin-embedded mouse liver tissue stained for CTNNA1 with ab51032 at a 1/100 dilution in immunohistochemical analysis. Rabbit specific IHC polymer detection kit HRP/DAB (**ab209101**) was used as a secondary antibody and Hematoxylin used as a counterstain. Heat mediated antigen retrieval with Tris-EDTA buffer (pH 9.0, epitope retrieval solution 2) was performed for 20 minutes.

Positive staining was seen on mouse liver.

The section was incubated with ab51032 for 30 minutes at room temperature.

The immunostaining staining was performed on a Leica Biosystems BOND<sup>®</sup> RX instrument.



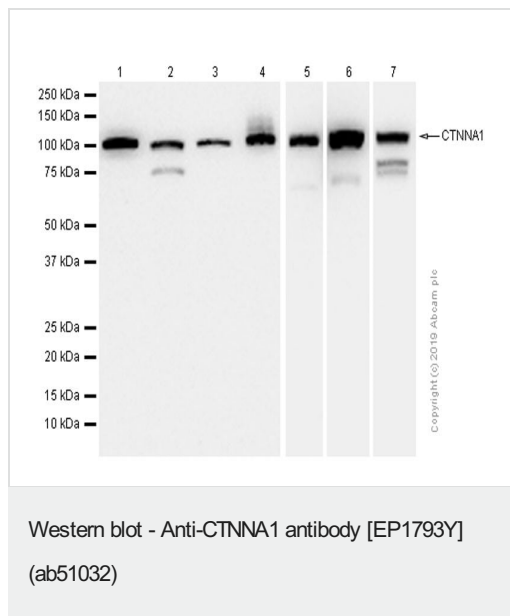
Immunohistochemistry (Formalin/PFA-fixed paraffin-embedded sections) - Anti-CTNNA1 antibody [EP1793Y] (ab51032)

Paraffin-embedded human stomach tissue stained for CTNNA1 with ab51032 at a 1/100 dilution in immunohistochemical analysis. Rabbit specific IHC polymer detection kit HRP/DAB (**ab209101**) was used as a secondary antibody and Hematoxylin used as a counterstain. Heat mediated antigen retrieval with Tris-EDTA buffer (pH 9.0, epitope retrieval solution 2) was performed for 20 minutes.

Positive staining was seen on human stomach.

The section was incubated with ab51032 for 30 minutes at room temperature.

The immunostaining staining was performed on a Leica Biosystems BOND<sup>®</sup> RX instrument.



**All lanes** : Anti-CTNNA1 antibody [EP1793Y] (ab51032) at 1/10000 dilution

**Lane 1** : Mouse heart lysate

**Lane 2** : Mouse kidney lysate

**Lane 3** : Rat brain lysate

**Lane 4** : Rat kidney lysate

**Lane 5** : HeLa (Human cervix adenocarcinoma epithelial cell) whole cell lysate

**Lane 6** : A431 (Human epidermoid carcinoma epithelial cell) whole cell lysate

**Lane 7** : HUVEC (Human umbilical vein endothelial cell) whole cell lysate

Lysates/proteins at 20 µg per lane.

### Secondary

**All lanes** : Goat Anti-Rabbit IgG H&L (HRP) ([ab97051](#)) at 1/20000 dilution

**Predicted band size:** 100 kDa

**Observed band size:** 100 kDa

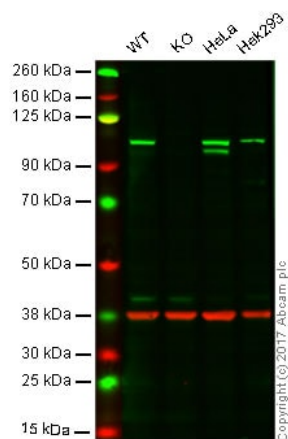
Exposure time

Lane 1-4: 180 seconds

Lane 5,7: 40 seconds

Lane 6: 5 seconds

Blocking/diluting buffer and concentration: 5% NFDM/TBST



Western blot - Anti-CTNNA1 antibody [EP1793Y]  
(ab51032)

**Lane 1:** Wild-type HAP1 whole cell lysate (20 µg)

**Lane 2:** CTNNA1 HAP1 whole cell lysate (20 µg)

**Lane 3:** HeLa whole cell lysate (20 µg)

**Lane 4:** HEK293 whole cell lysate (20 µg)

**Lanes 1 - 4:** Merged signal (red and green). Green - ab51032 observed at 100 kDa. Red - loading control, **ab9484**, observed at 37 kDa.

ab51032 was shown to recognize CTNNA1 in wild-type cells as signal was lost at the expected MW in CTNNA1 knockout cells. Additional cross-reactive bands were observed in the wild-type and knockout cells. Wild-type and CTNNA1 knockout samples were subjected to SDS-PAGE. Ab51032 and **ab9484** (Mouse anti-GAPDH loading control) were incubated overnight at 4°C at 1/50000 dilution and 1/20000 dilution respectively. Blots were developed with Goat anti-Rabbit IgG H&L (IRDye® 800CW) preabsorbed **ab216773** and Goat anti-Mouse IgG H&L (IRDye® 680RD) preabsorbed **ab216776** secondary antibodies at 1/20000 dilution for 1 hour at room temperature before imaging.

#### Why choose a recombinant antibody?



**Research with confidence**  
Consistent and reproducible results



**Long-term and scalable supply**  
Recombinant technology



**Success from the first experiment**  
Confirmed specificity



**Ethical standards compliant**  
Animal-free production

Anti-CTNNA1 antibody [EP1793Y] (ab51032)

**Please note:** All products are "FOR RESEARCH USE ONLY. NOT FOR USE IN DIAGNOSTIC PROCEDURES"

#### Our Promise to you: Quality guaranteed and expert technical support

- Replacement or refund for products not performing as stated on the datasheet
- Valid for 12 months from date of delivery
- Response to your inquiry within 24 hours
- We provide support in Chinese, English, French, German, Japanese and Spanish
- Extensive multi-media technical resources to help you
- We investigate all quality concerns to ensure our products perform to the highest standards

If the product does not perform as described on this datasheet, we will offer a refund or replacement. For full details of the Abpromise, please visit <https://www.abcam.co.jp/abpromise> or contact our technical team.

### **Terms and conditions**

---

- Guarantee only valid for products bought direct from Abcam or one of our authorized distributors