

Anti-Ctip1/BCL-11A antibody [18B12DE6] ab19489

KO 評価済

★★★★★ 3 Abreviews 9 References 画像数 3

製品の概要

製品名	Anti-Ctip1/BCL-11A antibody [18B12DE6]
製品の詳細	Mouse monoclonal [18B12DE6] to Ctip1/BCL-11A
由来種	Mouse
アプリケーション	適用あり: IHC-P, WB, Flow Cyt
種交差性	交差種: Mouse, Human
免疫原	Fusion protein corresponding to Human Ctip1/BCL-11A. Database link: Q9H165
エピトープ	Epitope is in carboxyl terminus of CTIP1/Bcl11a (aa's 434-776).
特記事項	<p>The Life Science industry has been in the grips of a reproducibility crisis for a number of years. Abcam is leading the way in addressing this with our range of recombinant monoclonal antibodies and knockout edited cell lines for gold-standard validation. Please check that this product meets your needs before purchasing.</p> <p>If you have any questions, special requirements or concerns, please send us an inquiry and/or contact our Support team ahead of purchase. Recommended alternatives for this product can be found below, along with publications, customer reviews and Q&As</p>

製品の特性

製品の状態	Liquid
保存方法	Shipped at 4°C. Store at +4°C.
バッファー	pH: 7.50 Preservative: 0.02% Sodium azide Constituent: HEPES
精製度	IgG fraction
ポリ/モノ	モノクローナル
クローン名	18B12DE6
アイソタイプ	IgG1
軽鎖の種類	kappa

アプリケーション

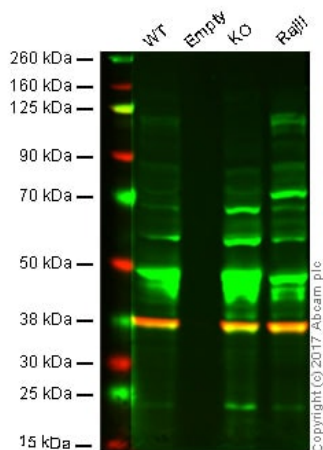
The Abpromise guarantee **Abpromise保証は、次のテスト済みアプリケーションにおけるab19489の使用に適用されます**
アプリケーションノートには、推奨の開始希釈率がありますが、適切な希釈率につきましてはご検討ください。

アプリケーション	Abreviews	特記事項
IHC-P		Use a concentration of 4 µg/ml.
WB		1/1000. Predicted molecular weight: 91 kDa.
Flow Cyt		Use 2µg for 10 ⁶ cells. ab170190 - Mouse monoclonal IgG1, is suitable for use as an isotype control with this antibody.

ターゲット情報

機能	Functions as a myeloid and B-cell proto-oncogene. May play important roles in leukemogenesis and hematopoiesis. An essential factor in lymphopoiesis, is required for B-cell formation in fetal liver. May function as a modulator of the transcriptional repression activity of ARP1.
組織特異性	Expressed at high levels in brain, spleen thymus, bone marrow and testis. Expressed in CD34-positive myeloid precursor cells, B-cells, monocytes and megakaryocytes. Expression is tightly regulated during B-cell development.
関連疾患	Note=Chromosomal aberrations involving BCL11A may be a cause of lymphoid malignancies. Translocation t(2;14)(p13;q32.3) causes BCL11A deregulation and amplification.
配列類似性	Contains 6 C2H2-type zinc fingers.
翻訳後修飾	Sumoylated by SUMO1.
細胞内局在	Cytoplasm. Nucleus. Associates with the nuclear body. Colocalizes with SUMO1 and SENP2 in nuclear speckles.

画像



Western blot - Anti-Ctip1/BCL-11A antibody
[18B12DE6] (ab19489)

Lane 1: Wild type HAP1 whole cell lysate (20 µg)

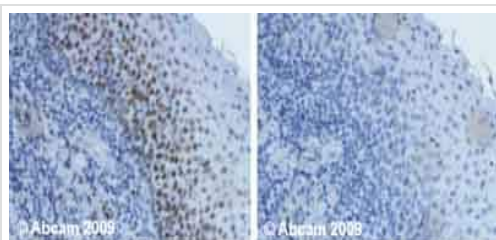
Lane 2: Empty (0 µg)

Lane 3: BCL11A (Ctip1) knockout HAP1 whole cell lysate (20 µg)

Lane 4: Raji whole cell lysate (20 µg)

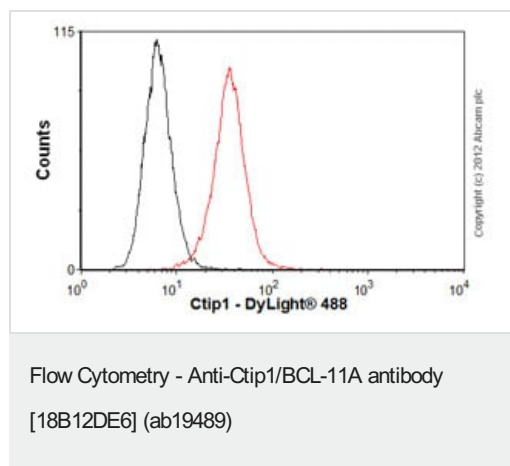
Lanes 1 - 4: Merged signal (red and green). Green - ab19489 observed at 91 kDa. Red - loading control, **ab181602**, observed at 37 kDa.

ab19489 was shown to recognize BCL11A (Ctip1) in wild type cells as signal was lost at the expected MW in BCL11A (Ctip1) knockout cells. Additional cross-reactive bands were observed in the wild-type and knockout cells. Wild-type and Empty knockout samples were subjected to SDS-PAGE. ab19489 and **ab181602** (Rabbit anti GAPDH loading control) were incubated overnight at 4°C at 1000 dilution and 1/10000 dilution respectively. Blots were developed with Goat anti-Mouse IgG H&L (IRDye® 800CW) preabsorbed **ab216772** and Goat anti-Rabbit IgG H&L (IRDye® 680RD) preabsorbed **ab216777** secondary antibodies at 1/10000 dilution for 1 hour at room temperature before imaging.



Immunohistochemistry (Formalin/PFA-fixed paraffin-embedded sections) - Anti-Ctip1/BCL-11A antibody
[18B12DE6] (ab19489)

Human normal tonsil. Staining is localised to cytoplasm and nuclei. Left panel: with primary antibody at 4 µg/ml. Right panel: isotype control. Sections were stained using an automated system DAKO Autostainer Plus, at room temperature: sections were rehydrated and antigen retrieved with the Dako 3 in 1 AR buffers citrate EDTA pH 9.0 in a DAKO PT Link. Slides were peroxidase blocked in 3% H₂O₂ in methanol for 10 mins. They were then blocked with Dako Protein block for 10 minutes (containing casein 0.25% in PBS) then incubated with primary antibody for 20 min and detected with Dako envision flex amplification kit for mouse for 30 minutes. Colorimetric detection was completed with Diaminobenzidine for 5 minutes. Slides were counterstained with Haematoxylin and coverslipped under DePeX. Please note that for manual staining we recommend to optimize the primary antibody concentration and incubation time (overnight incubation), and amplification may be required.



Overlay histogram showing Ramos cells stained with ab19489 (red line). The cells were fixed with 80% methanol (5 min) and then permeabilized with 0.1% PBS-Tween for 20 min. The cells were then incubated in 1x PBS / 10% normal goat serum / 0.3M glycine to block non-specific protein-protein interactions followed by the antibody (ab19489, 2µg/1x10⁶ cells) for 30 min at 22°C. The secondary antibody used was DyLight® 488 goat anti-mouse IgG (H+L) ([ab96879](#)) at 1/500 dilution for 30 min at 22°C. Isotype control antibody (black line) was mouse IgG1 [ICIGG1] ([ab91353](#), 2µg/1x10⁶ cells) used under the same conditions. Acquisition of >5,000 events was performed. This antibody gave a positive signal in Ramos cells fixed with 4% paraformaldehyde (10 min)/permeabilized with 0.1% PBS-Tween for 20 min used under the same conditions.

Please note: All products are "FOR RESEARCH USE ONLY. NOT FOR USE IN DIAGNOSTIC PROCEDURES"

Our Abpromise to you: Quality guaranteed and expert technical support

- Replacement or refund for products not performing as stated on the datasheet
- Valid for 12 months from date of delivery
- Response to your inquiry within 24 hours
- We provide support in Chinese, English, French, German, Japanese and Spanish
- Extensive multi-media technical resources to help you
- We investigate all quality concerns to ensure our products perform to the highest standards

If the product does not perform as described on this datasheet, we will offer a refund or replacement. For full details of the Abpromise, please visit <https://www.abcam.co.jp/abpromise> or contact our technical team.

Terms and conditions

- Guarantee only valid for products bought direct from Abcam or one of our authorized distributors