


# Anti-CtIP antibody ab117722

**1 References** [画像数 4](#)

### 製品の概要

---

製品名	Anti-CtIP antibody
製品の詳細	Rabbit polyclonal to CtIP
由来種	Rabbit
アプリケーション	<b>適用あり:</b> WB, IHC-P
種交差性	<b>交差種:</b> Mouse, Human <b>交差が予測される動物種:</b> Rat 
免疫原	Synthetic peptide corresponding to Human CtIP (internal sequence) conjugated to keyhole limpet haemocyanin. Database link: <a href="#">Q99708</a>
ポジティブ・コントロール	Human Breast, Colon Myenteric Plexus and Pancreas tissues.
特記事項	<p>The Life Science industry has been in the grips of a reproducibility crisis for a number of years. Abcam is leading the way in addressing this with our range of recombinant monoclonal antibodies and knockout edited cell lines for gold-standard validation. Please check that this product meets your needs before purchasing.</p> <p>If you have any questions, special requirements or concerns, please send us an inquiry and/or contact our Support team ahead of purchase. Recommended alternatives for this product can be found below, along with publications, customer reviews and Q&amp;As</p>

### 製品の特性

---

製品の状態	Liquid
保存方法	Shipped at 4°C. Upon delivery aliquot and store at -20°C. Avoid freeze / thaw cycles.
バッファー	pH: 7.4 Preservative: 0.02% Sodium azide Constituent: PBS
精製度	Immunogen affinity purified
ポリ/モノ	ポリクローナル
アイソタイプ	IgG

アプリケーション

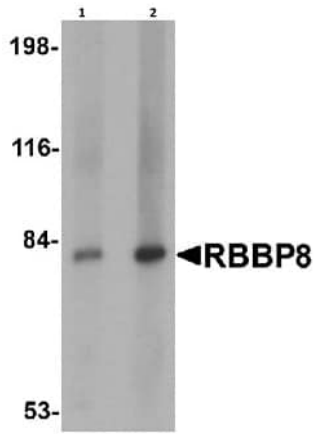
**The Abpromise guarantee** **Abpromise保証は、次のテスト済みアプリケーションにおけるab117722の使用に適用されず**  
 アプリケーションノートには、推奨の開始希釈率がありますが、適切な希釈率につきましてはご検討ください。

アプリケーション	Abreviews	特記事項
WB		Use a concentration of 1 - 2 µg/ml. Predicted molecular weight: 101 kDa.
IHC-P		Use a concentration of 5 µg/ml. Perform heat mediated antigen retrieval with citrate buffer pH 6 before commencing with IHC staining protocol.

## ターゲット情報

<b>機能</b>	Endonuclease that cooperates with the MRE11-RAD50-NBN (MRN) complex in processing meiotic and mitotic double-strand breaks (DSBs) by ensuring both resection and intrachromosomal association of the broken ends. Functions downstream of the MRN complex and ATM, promotes ATR activation and its recruitment to DSBs in the S/G2 phase facilitating the generation of ssDNA. Component of the BRCA1-RBBP8 complex that regulates CHEK1 activation and controls cell cycle G2/M checkpoints on DNA damage. Promotes microhomology-mediated alternative end joining (A-NHEJ) during class-switch recombination and plays an essential role in chromosomal translocations.
<b>関連疾患</b>	Seckel syndrome 2 Jawad syndrome Genetic variability in RBBP8 is noted as a factor in BRCA1-associated breast cancer risk (PubMed:21799032). Exhibits sensitivity to tamoxifen in certain breast cancer cell lines (PubMed:18171986).
<b>配列類似性</b>	Belongs to the COM1/SAE2/CtIP family.
<b>ドメイン</b>	The PXDLS motif binds to a cleft in CtBP proteins. The damage-recruitment motif is required for DNA binding and translocation to sites of DNA damage.
<b>翻訳後修飾</b>	Acetylated. Deacetylation by SIRT6 upon DNA damage promotes DNA end resection. Hyperphosphorylation upon ionizing radiation results in dissociation from BRCA1. Phosphorylation at Thr-847 by CDK1 is essential for the recruitment to DNA and the DNA repair function. Phosphorylated on Ser-327 as cells enter G2 phase. This phosphorylation is required for binding BRCA1 and for the G2/M DNA damage transition checkpoint control. Ubiquitinated (PubMed:14654780, PubMed:16818604). Ubiquitination at multiple sites by BRCA1 (via its N-terminal RING domain) does not lead to its proteosomal degradation but instead the ubiquitinated RBBP8 binds to chromatin following DNA damage and may play a role in G2/M checkpoint control (PubMed:16818604). Ubiquitinated by RNF138 at its N-terminus (PubMed:26502057).
<b>細胞内局在</b>	Nucleus. Chromosome. Associates with sites of DNA damage in S/G2 phase (PubMed:10764811). Ubiquitinated RBBP8 binds to chromatin following DNA damage (PubMed:16818604).

## 画像



Western blot - Anti-CtIP antibody (ab117722)

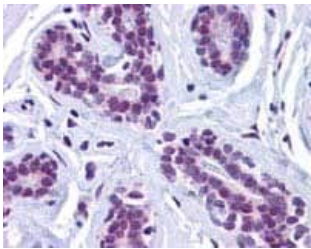
**Lane 1** : Anti-CtIP antibody (ab117722) at 1 µg/ml

**Lane 2** : Anti-CtIP antibody (ab117722) at 2 µg/ml

**Lane 1** : Mouse spleen tissue lystae

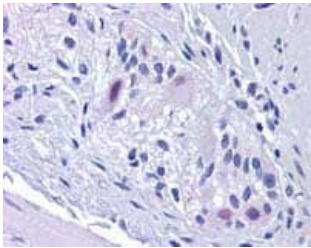
**Lane 2** : Mouse spleen tissue lysate

**Predicted band size:** 101 kDa



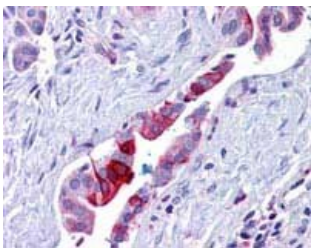
Immunohistochemistry (Formalin/PFA-fixed paraffin-embedded sections) - Anti-CtIP antibody (ab117722)

Immunohistochemistry Image of Human Breast: Formalin-Fixed, Paraffin-Embedded (FFPE) stained with anti-CTIP antibody (ab117722).



Immunohistochemistry (Formalin/PFA-fixed paraffin-embedded sections) - Anti-CtIP antibody (ab117722)

Immunohistochemistry Image of Human Colon, Myenteric Plexus: Formalin-Fixed, Paraffin-Embedded (FFPE) stained with anti-CTIP antibody (ab117722).



Immunohistochemistry (Formalin/PFA-fixed paraffin-embedded sections) - Anti-CtIP antibody (ab117722)

Immunohistochemistry Image of Human Pancreas, Duct: Formalin-Fixed, Paraffin-Embedded (FFPE) stained with anti-CTIP antibody (ab117722).

**Please note:** All products are "FOR RESEARCH USE ONLY. NOT FOR USE IN DIAGNOSTIC PROCEDURES"

### **Our Abpromise to you: Quality guaranteed and expert technical support**

---

- Replacement or refund for products not performing as stated on the datasheet
- Valid for 12 months from date of delivery
- Response to your inquiry within 24 hours
  
- We provide support in Chinese, English, French, German, Japanese and Spanish
- Extensive multi-media technical resources to help you
- We investigate all quality concerns to ensure our products perform to the highest standards

If the product does not perform as described on this datasheet, we will offer a refund or replacement. For full details of the Abpromise, please visit <https://www.abcam.co.jp/abpromise> or contact our technical team.

### **Terms and conditions**

---

- Guarantee only valid for products bought direct from Abcam or one of our authorized distributors