

### Anti-CtBP1 antibody [EPR6800] ab129181

リコンビナント RabMAb

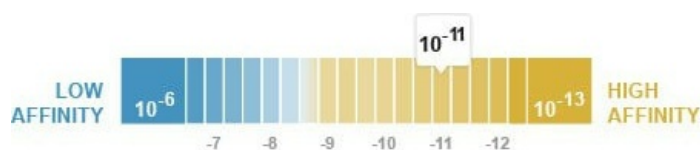
11 References 画像数 6

#### 製品の概要

製品名	Anti-CtBP1 antibody [EPR6800]
製品の詳細	Rabbit monoclonal [EPR6800] to CtBP1
由来種	Rabbit
アプリケーション	適用あり: Flow Cyt (Intra), WB, IHC-P, ICC/IF
種交差性	交差種: Human 交差が予測される動物種: Mouse, Rat 
免疫原	Synthetic peptide within Human CtBP1 aa 350-450. The exact sequence is proprietary.
ポジティブ・コントロール	IHC-P: Human colon tissue. WB: SH-SY5Y, Raji, A549 and HeLa whole cell lysate ( <a href="#">ab150035</a> ). ICC/IF: HeLa cells. Flow Cyt (intra): Raji cells.
特記事項	This product is a recombinant monoclonal antibody, which offers several advantages including: <ul style="list-style-type: none"> <li>- High batch-to-batch consistency and reproducibility</li> <li>- Improved sensitivity and specificity</li> <li>- Long-term security of supply</li> <li>- Animal-free production</li> </ul> For more information <a href="#">see here</a> . Our RabMAb <sup>®</sup> technology is a patented hybridoma-based technology for making rabbit monoclonal antibodies. For details on our patents, please refer to <a href="#">RabMAb<sup>®</sup> patents</a> .

#### 製品の特性

製品の状態	Liquid
保存方法	Shipped at 4°C. Store at -20°C. Stable for 12 months at -20°C.
解離定数 (K <sub>D</sub> 値)	K <sub>D</sub> = 1.50 x 10 <sup>-11</sup> M



[Learn more about K<sub>D</sub>](#)

バッファー	pH: 7.20
-------	----------

	Preservative: 0.01% Sodium azide
	Constituents: 9% PBS, 40% Glycerol (glycerin, glycerine), 0.05% BSA, 50% Tissue culture supernatant
精製度	Protein A purified
ポリ/モノ	モノクローナル
クローン名	EPR6800
アイソタイプ	IgG

## アプリケーション

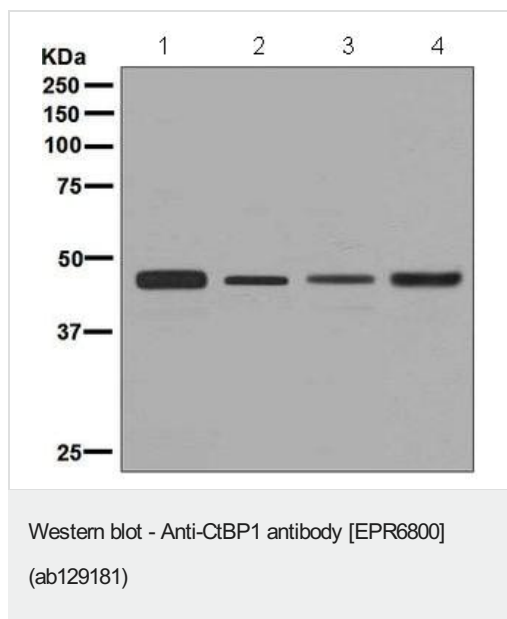
**The Abpromise guarantee**      **Abpromise保証は、** 次のテスト済みアプリケーションにおけるab129181の使用に適用されます  
アプリケーションノートには、推奨の開始希釈率がありますが、適切な希釈率につきましてはご検討ください。

アプリケーション	Abreviews	特記事項
Flow Cyt (Intra)		1/2000.
WB		1/1000 - 1/10000. Detects a band of approximately 48 kDa (predicted molecular weight: 48 kDa).
IHC-P		1/100 - 1/250. Perform heat mediated antigen retrieval before commencing with IHC staining protocol.
ICC/IF		1/100 - 1/250.

## ターゲット情報

機能	Involved in controlling the equilibrium between tubular and stacked structures in the Golgi complex. Functions in brown adipose tissue (BAT) differentiation. Corepressor targeting diverse transcription regulators such as GLIS2. Has dehydrogenase activity.
配列類似性	Belongs to the D-isomer specific 2-hydroxyacid dehydrogenase family.
翻訳後修飾	The level of phosphorylation appears to be regulated during the cell cycle. Phosphorylated upon DNA damage, probably by ATM or ATR. Phosphorylation by HIPK2 on Ser-422 induces proteasomal degradation. ADP-ribosylated; when cells are exposed to brefeldin A. Sumoylation on Lys-428 is promoted by the E3 SUMO-protein ligase CBX4.
細胞内局在	Cytoplasm. Nucleus.

## 画像



**All lanes** : Anti-CtBP1 antibody [EPR6800] (ab129181) at 1/1000 dilution

**Lane 1** : SH-SY5Y cell lysate

**Lane 2** : Raji cell lysate

**Lane 3** : A549 cell lysate

**Lane 4** : HeLa cell lysate

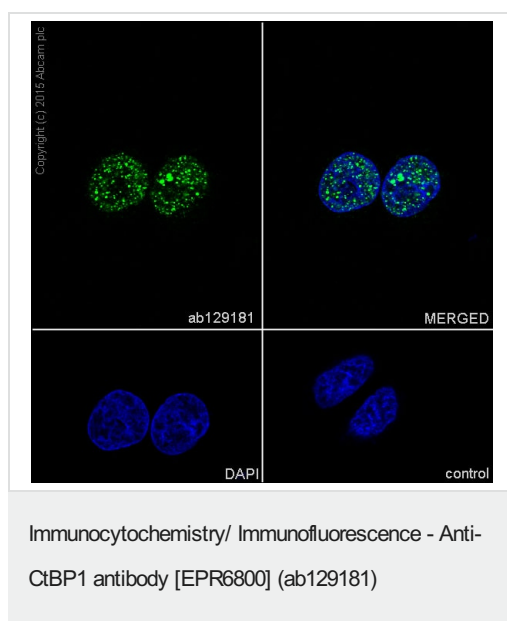
Lysates/proteins at 10 µg per lane.

### Secondary

**All lanes** : HRP-conjugated goat anti-rabbit IgG

**Predicted band size:** 48 kDa

**Observed band size:** 48 kDa

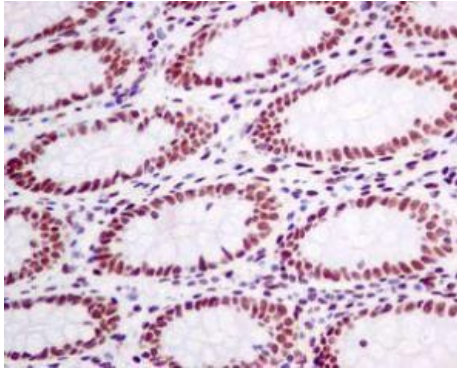


Immunocytochemistry/Immunofluorescence analysis of HeLa cells labelling CtBP1 with ab129181 at 1/500. Cells were fixed with 4% paraformaldehyde and permeabilized with 0.1% Triton X-100.

**ab150077**, an Alexa Fluor® 488-conjugated goat anti-rabbit IgG (1/1000) was used as the secondary antibody.

Control: PBS only.

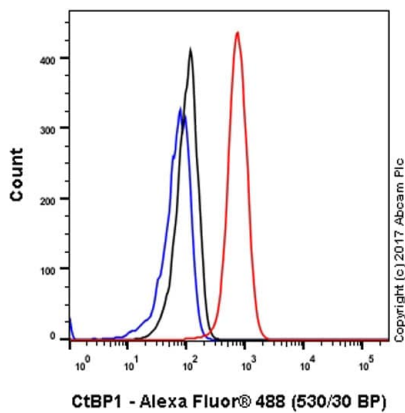
Nuclear counter stain: DAPI.



Immunohistochemistry (Formalin/PFA-fixed paraffin-embedded sections) - Anti-CtBP1 antibody  
[EPR6800] (ab129181)

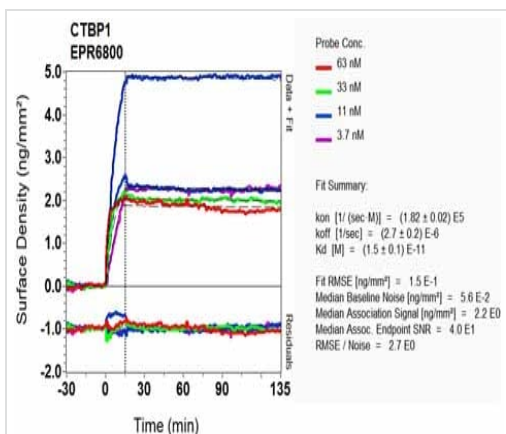
ab129181, at 1/100 dilution, staining CtBP1 in formalin-fixed, paraffin-embedded human colon tissue by immunohistochemistry.

Perform heat mediated antigen retrieval before commencing with IHC staining protocol.



Flow Cytometry (Intracellular) - Anti-CtBP1 antibody  
[EPR6800] (ab129181)

Intracellular Flow Cytometry analysis of Raji (Human Burkitt's lymphoma B lymphocyte) cells labeling CtBP1 (red) with ab129181 at a 1/2000 dilution. Cells were fixed with 4% paraformaldehyde and permeabilized with 90% methanol. A goat anti-rabbit IgG (Alexa Fluor® 488) (**ab150077**) was used as the secondary antibody at a 1/2000 dilution. Black - Rabbit monoclonal IgG (Black) (**ab172730**). Blue (unlabeled control) - Cell without incubation with primary antibody and secondary antibody (Blue).



SPR Scanning - Anti-CtBP1 antibody [EPR6800]  
(ab129181)

Equilibrium dissociation constant ( $K_D$ )

Learn more about  $K_D$

[Click here to learn more about  \$K\_D\$](#)

Why choose a recombinant antibody?

**Research with confidence**  
Consistent and reproducible results

**Long-term and scalable supply**  
Recombinant technology

**Success from the first experiment**  
Confirmed specificity

**Ethical standards compliant**  
Animal-free production

Anti-CtBP1 antibody [EPR6800] (ab129181)

**Please note:** All products are "FOR RESEARCH USE ONLY. NOT FOR USE IN DIAGNOSTIC PROCEDURES"

### Our Abpromise to you: Quality guaranteed and expert technical support

- Replacement or refund for products not performing as stated on the datasheet
- Valid for 12 months from date of delivery
- Response to your inquiry within 24 hours

- We provide support in Chinese, English, French, German, Japanese and Spanish
- Extensive multi-media technical resources to help you
- We investigate all quality concerns to ensure our products perform to the highest standards

If the product does not perform as described on this datasheet, we will offer a refund or replacement. For full details of the Abpromise, please visit <https://www.abcam.co.jp/abpromise> or contact our technical team.

#### **Terms and conditions**

---

- Guarantee only valid for products bought direct from Abcam or one of our authorized distributors