

Anti-CT A antibody [EPR3941] ab92440

リコンビナント **RabMAb**

★★★★★ **1 Abreviews** 画像数 3

製品の概要

製品名	Anti-CT A antibody [EPR3941]
製品の詳細	Rabbit monoclonal [EPR3941] to CT A
由来種	Rabbit
アプリケーション	適用あり: WB, ICC/IF 適用なし: IHC-P
種交差性	交差種: Human
免疫原	Synthetic peptide. This information is proprietary to Abcam and/or its suppliers.
ポジティブ・コントロール	A549, K562, HeLa and HepG2 cell lysates; HeLa cells
特記事項	<p>This product is a recombinant monoclonal antibody, which offers several advantages including:</p> <ul style="list-style-type: none"> - High batch-to-batch consistency and reproducibility - Improved sensitivity and specificity - Long-term security of supply - Animal-free production <p>For more information see here.</p> <p>Our RabMAb[®] technology is a patented hybridoma-based technology for making rabbit monoclonal antibodies. For details on our patents, please refer to RabMAb[®] patents.</p> <p>Mouse, Rat: We have preliminary internal testing data to indicate this antibody may not react with these species. Please contact us for more information.</p>

製品の特性

製品の状態	Liquid
保存方法	Shipped at 4°C. Store at -20°C. Stable for 12 months at -20°C.
バッファー	<p>pH: 7.20</p> <p>Preservative: 0.05% Sodium azide</p> <p>Constituents: 0.1% BSA, 40% Glycerol (glycerin, glycerine), 9.85% Tris glycine, 50% Tissue culture supernatant</p>
精製度	Tissue culture supernatant
ポリ/モノ	モノクローナル

クローン名 EPR3941
アイソタイプ IgG

アプリケーション

The Abpromise guarantee **Abpromise保証は、**次のテスト済みアプリケーションにおけるab92440の使用に適用されます
アプリケーションノートには、推奨の開始希釈率がありますが、適切な希釈率につきましてはご検討ください。

アプリケーション	Abreviews	特記事項
WB	★★★★☆ (1)	
ICC/IF		

追加情報

Flow Cyt: 1/500 - 1/1000.
ICC/IF: 1/100 - 1/250.
IP: 1/10 - 1/100.
WB: 1/1000 - 1/10000. Predicted molecular weight: 42 kDa.

Is unsuitable for IHC-P.

Not yet tested in other applications.
Optimal dilutions/concentrations should be determined by the end user.

ターゲット情報

機能 Controls phosphatidylcholine synthesis.

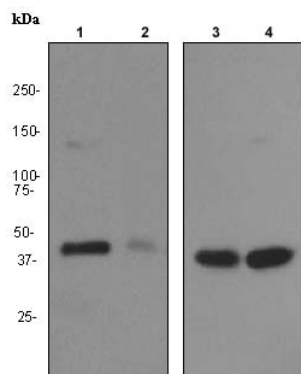
パスウェイ Phospholipid metabolism; phosphatidylcholine biosynthesis; phosphatidylcholine from phosphocholine: step 1/2.

配列類似性 Belongs to the cytidyltransferase family.

翻訳後修飾 The serine residues of the C-terminus are phosphorylated. The inactive soluble form is stabilized by phosphorylation, the active membrane bound form is promoted by anionic lipids or diacylglycerol, and is stabilized by dephosphorylation.

細胞内局在 Cytoplasm > cytosol. Membrane. It can interconvert between an inactive cytosolic form and an active membrane-bound form.

画像



Western blot - Anti-CT A antibody [EPR3941]
(ab92440)

All lanes : Anti-CT A antibody [EPR3941] (ab92440) at 1/1000 dilution

Lane 1 : A549 cell lysate

Lane 2 : K562 cell lysate

Lane 3 : HeLa cell lysate

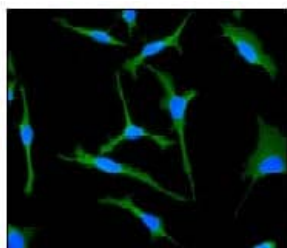
Lane 4 : HepG2 cell lysate

Lysates/proteins at 10 µg per lane.

Secondary

All lanes : HRP labelled goat anti-rabbit at 1/2000 dilution

Predicted band size: 42 kDa



Immunocytochemistry/ Immunofluorescence - Anti-
CT A antibody [EPR3941] (ab92440)

ab92440, at 1/100 dilution, staining CT A in HeLa cells by Immunofluorescence.

Why choose a recombinant antibody?



Research with confidence
Consistent and reproducible results



Long-term and scalable supply
Recombinant technology



Success from the first experiment
Confirmed specificity



Ethical standards compliant
Animal-free production

Anti-CT A antibody [EPR3941] (ab92440)

Please note: All products are "FOR RESEARCH USE ONLY. NOT FOR USE IN DIAGNOSTIC PROCEDURES"

Our Abpromise to you: Quality guaranteed and expert technical support

- Replacement or refund for products not performing as stated on the datasheet
- Valid for 12 months from date of delivery
- Response to your inquiry within 24 hours
- We provide support in Chinese, English, French, German, Japanese and Spanish
- Extensive multi-media technical resources to help you
- We investigate all quality concerns to ensure our products perform to the highest standards

If the product does not perform as described on this datasheet, we will offer a refund or replacement. For full details of the Abpromise, please visit <https://www.abcam.co.jp/abpromise> or contact our technical team.

Terms and conditions

- Guarantee only valid for products bought direct from Abcam or one of our authorized distributors