

Anti-CT A antibody [EPR3940(2)] ab109263

リコンビナント **RabMAb**

9 References [画像数 9](#)

製品の概要

製品名	Anti-CT A antibody [EPR3940(2)]
製品の詳細	Rabbit monoclonal [EPR3940(2)] to CT A
由来種	Rabbit
アプリケーション	適用あり: WB, IHC-P, ICC/IF 適用なし: Flow Cyt or IP
種交差性	交差種: Mouse, Human
免疫原	Synthetic peptide. This information is proprietary to Abcam and/or its suppliers.
ポジティブ・コントロール	WB: HeLa, HepG2, A549, K562 , Mouse brain, and RAW 264.7 lysates. IHC-P: human colon, human prostatic hyperplasia tissue and mouse pancreas tissues. ICC/IF: HeLa cells.
特記事項	<p>This product is a recombinant monoclonal antibody, which offers several advantages including:</p> <ul style="list-style-type: none"> - High batch-to-batch consistency and reproducibility - Improved sensitivity and specificity - Long-term security of supply - Animal-free production <p>For more information see here.</p> <p>Our RabMAb[®] technology is a patented hybridoma-based technology for making rabbit monoclonal antibodies. For details on our patents, please refer to RabMAb[®] patents.</p> <p>Rat: We have preliminary internal testing data to indicate this antibody may not react with this species. Please contact us for more information.</p>

製品の特性

製品の状態	Liquid
保存方法	Shipped at 4°C. Store at -20°C. Stable for 12 months at -20°C.
バッファー	pH: 7.20 Preservative: 0.01% Sodium azide Constituents: 59% PBS, 40% Glycerol (glycerin, glycerine), 0.05% BSA
精製度	Protein A purified
ポリ/モノ	モノクローナル

クローン名	EPR3940(2)
アイソタイプ	IgG

アプリケーション

The Abpromise guarantee Abpromise保証は、 次のテスト済みアプリケーションにおけるab109263の使用に適用されます
アプリケーションノートには、推奨の開始希釈率がありますが、適切な希釈率につきましてはご確認ください。

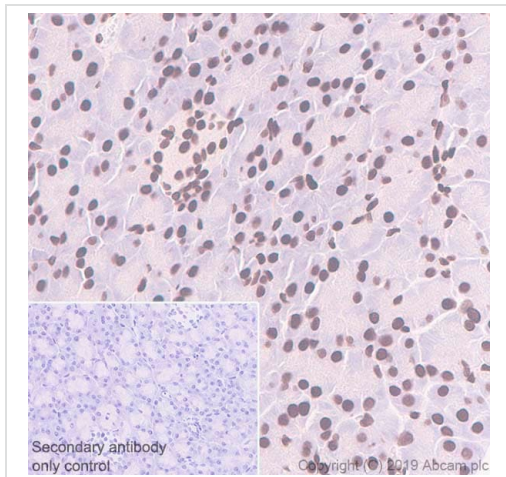
アプリケーション	Abreviews	特記事項
WB		1/1000 - 1/10000. Predicted molecular weight: 42 kDa.
IHC-P		1/500 - 1/1000. Perform heat mediated antigen retrieval before commencing with IHC staining protocol. 1:500 in human tissues / 1:1000 in mouse tissues See <u>IHC antigen retrieval protocols.</u>
ICC/IF		1/50.

追加情報 Is unsuitable for Flow Cyt or IP.

ターゲット情報

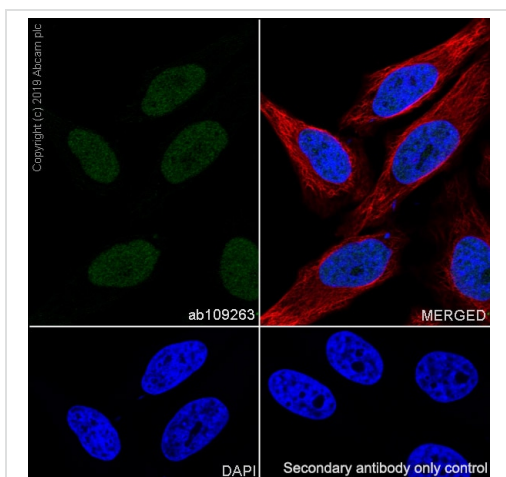
機能	Controls phosphatidylcholine synthesis.
パスウェイ	Phospholipid metabolism; phosphatidylcholine biosynthesis; phosphatidylcholine from phosphocholine: step 1/2.
配列類似性	Belongs to the cytidyltransferase family.
翻訳後修飾	The serine residues of the C-terminus are phosphorylated. The inactive soluble form is stabilized by phosphorylation, the active membrane bound form is promoted by anionic lipids or diacylglycerol, and is stabilized by dephosphorylation.
細胞内局在	Cytoplasm > cytosol. Membrane. It can interconvert between an inactive cytosolic form and an active membrane-bound form.

画像



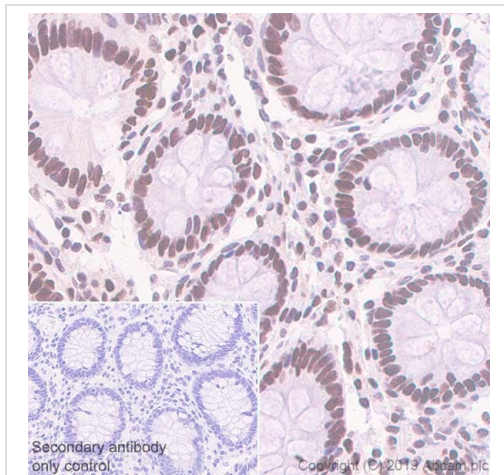
Immunohistochemistry (Formalin/PFA-fixed paraffin-embedded sections) - Anti-CT A antibody [EPR3940(2)] (ab109263)

Immunohistochemistry (Formalin/PFA-fixed paraffin-embedded sections) analysis of mouse pancreas tissue sections labeling CT A with Purified ab109263 at 1:1000 dilution (0.53 µg/ml). Perform heat mediated antigen retrieval using **ab93684** (Tris/EDTA buffer, pH 9.0). Purified ImmunoHistoProbe one step HRP Polymer (ready to use) was used for detection. Negative control: PBS instead of the primary antibody. Hematoxylin was used as a counterstain.



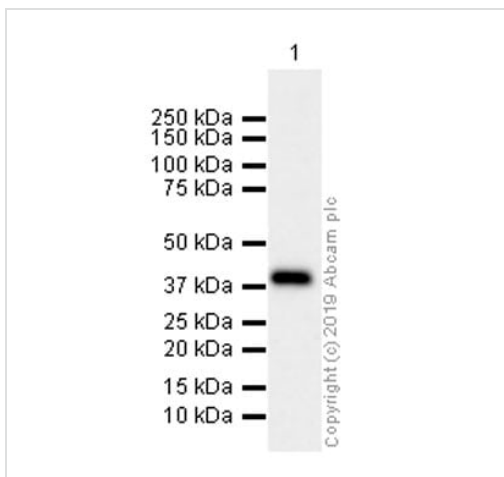
Immunocytochemistry/ Immunofluorescence - Anti-CT A antibody [EPR3940(2)] (ab109263)

Immunocytochemistry/ Immunofluorescence analysis of HeLa (Human cervix adenocarcinoma epithelial cell) cells labeling CT A with Purified ab109263 at 1:50 dilution (10 µg/ml). Cells were fixed in 4% Paraformaldehyde and permeabilized with 0.1% tritonX-100. Cells were counterstained with Ab195889 Anti-alpha Tubulin antibody [DM1A] - Microtubule Marker (Alexa Fluor® 594) 1:200 (2.5 µg/ml). Goat anti rabbit IgG (Alexa Fluor® 488, **ab150077**) was used as the secondary antibody at 1:1000 (2 µg/ml) dilution. DAPI (blue) was used as nuclear counterstain. PBS instead of the primary antibody was used as the secondary antibody only control.



Immunohistochemistry (Formalin/PFA-fixed paraffin-embedded sections) - Anti-CT A antibody [EPR3940(2)] (ab109263)

Immunohistochemistry (Formalin/PFA-fixed paraffin-embedded sections) analysis of human colon tissue sections labeling CT A with Purified ab109263 at 1:500 dilution (1.06 µg/ml). Perform heat mediated antigen retrieval using [ab93684](#) (Tris/EDTA buffer, pH 9.0). Purified)ImmunoHistoProbe one step HRP Polymer (ready to use) was used for detection. Negative control: PBS instead of the primary antibody. Hematoxylin was used as a counterstain.



Western blot - Anti-CT A antibody [EPR3940(2)] (ab109263)

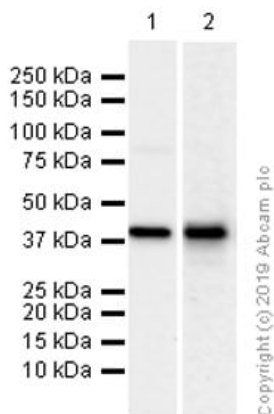
Anti-CT A antibody [EPR3940(2)] (ab109263) at 1/5000 dilution (Purified) + RAW 264.7 (Mouse Abelson murine leukemia virus-induced tumor macrophage) whole cell lysates at 20 µg

Secondary

Goat Anti-Rabbit IgG H&L (HRP) ([ab97051](#)) at 1/20000 dilution

Predicted band size: 42 kDa

Observed band size: 42 kDa



Western blot - Anti-CT A antibody [EPR3940(2)]
(ab109263)

All lanes : Anti-CT A antibody [EPR3940(2)] (ab109263) at 1/5000 dilution (Purified)

Lane 1 : HeLa (Human cervix adenocarcinoma epithelial cell) whole cell lysates

Lane 2 : Mouse brain lysates

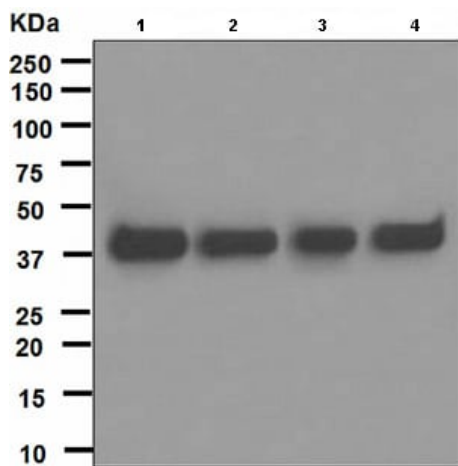
Lysates/proteins at 15 µg per lane.

Secondary

All lanes : Goat Anti-Rabbit IgG H&L (HRP) ([ab97051](#)) at 1/20000 dilution

Predicted band size: 42 kDa

Observed band size: 42 kDa



Western blot - Anti-CT A antibody [EPR3940(2)]
(ab109263)

All lanes : Anti-CT A antibody [EPR3940(2)] (ab109263) at 1/1000 dilution

Lane 1 : HepG2 cell lysate

Lane 2 : HeLa cell lysate

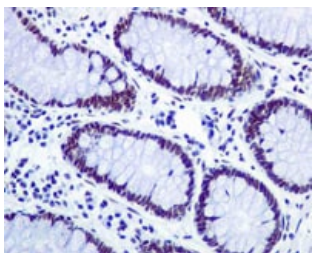
Lane 3 : A549 cell lysate

Lane 4 : K562 cell lysate

Lysates/proteins at 10 µg per lane.

Predicted band size: 42 kDa

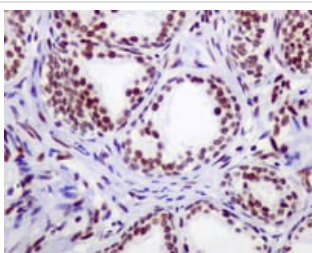
Observed band size: 42 kDa



Immunohistochemistry (Formalin/PFA-fixed paraffin-embedded sections) - Anti-CT A antibody [EPR3940(2)] (ab109263)

ab109263, at a 1/50 dilution, staining CT A in paraffin embedded Human colon tissue by Immunohistochemistry.

Perform heat mediated antigen retrieval before commencing with IHC staining protocol.



Immunohistochemistry (Formalin/PFA-fixed paraffin-embedded sections) - Anti-CT A antibody [EPR3940(2)] (ab109263)

ab109263, at a 1/50 dilution, staining CT A in paraffin embedded Human prostatic hyperplasia by Immunohistochemistry.

Perform heat mediated antigen retrieval before commencing with IHC staining protocol.

Why choose a recombinant antibody?



Research with confidence
Consistent and reproducible results



Long-term and scalable supply
Recombinant technology



Success from the first experiment
Confirmed specificity



Ethical standards compliant
Animal-free production

Anti-CT A antibody [EPR3940(2)] (ab109263)

Please note: All products are "FOR RESEARCH USE ONLY. NOT FOR USE IN DIAGNOSTIC PROCEDURES"

Our Abpromise to you: Quality guaranteed and expert technical support

- Replacement or refund for products not performing as stated on the datasheet

- Valid for 12 months from date of delivery
- Response to your inquiry within 24 hours
- We provide support in Chinese, English, French, German, Japanese and Spanish
- Extensive multi-media technical resources to help you
- We investigate all quality concerns to ensure our products perform to the highest standards

If the product does not perform as described on this datasheet, we will offer a refund or replacement. For full details of the Abpromise, please visit <https://www.abcam.co.jp/abpromise> or contact our technical team.

Terms and conditions

- Guarantee only valid for products bought direct from Abcam or one of our authorized distributors