


Anti-CSRP1 antibody ab70010

5 References **画像数 2**

製品の概要

製品名	Anti-CSRP1 antibody
製品の詳細	Rabbit polyclonal to CSRP1
由来種	Rabbit
アプリケーション	適用あり: WB, IHC-P
種交差性	交差種: Human 交差が予測される動物種: Rat 
免疫原	Synthetic peptide (Human) from an internal region
ポジティブ・コントロール	IHC-P: Human brain tissue. WB: HeLa, HepG2, COLO, Jurkat cells.
特記事項	<p>The Life Science industry has been in the grips of a reproducibility crisis for a number of years. Abcam is leading the way in addressing this with our range of recombinant monoclonal antibodies and knockout edited cell lines for gold-standard validation. Please check that this product meets your needs before purchasing.</p> <p>If you have any questions, special requirements or concerns, please send us an inquiry and/or contact our Support team ahead of purchase. Recommended alternatives for this product can be found below, along with publications, customer reviews and Q&As</p>

製品の特性

製品の状態	Liquid
保存方法	Shipped at 4°C. Upon delivery aliquot and store at -20°C. Avoid freeze / thaw cycles.
バッファー	<p>pH: 7.40</p> <p>Preservative: 0.02% Sodium azide</p> <p>Constituents: 50% Glycerol (glycerin, glycerine), 0.87% Sodium chloride, PBS</p>
精製度	Without Mg ²⁺ and Ca ²⁺
ポリ/モノ	ポリクローナル
アイソタイプ	IgG

アプリケーション

The Abpromise guarantee

Abpromise保証は、次のテスト済みアプリケーションにおけるab70010の使用に適用されます

アプリケーションノートには、推奨の開始希釈率がありますが、適切な希釈率につきましてはご確認ください。

アプリケーション	Abreviews	特記事項
WB		1/500 - 1/1000. Detects a band of approximately 21 kDa (predicted molecular weight: 21 kDa).
IHC-P		1/50 - 1/100.

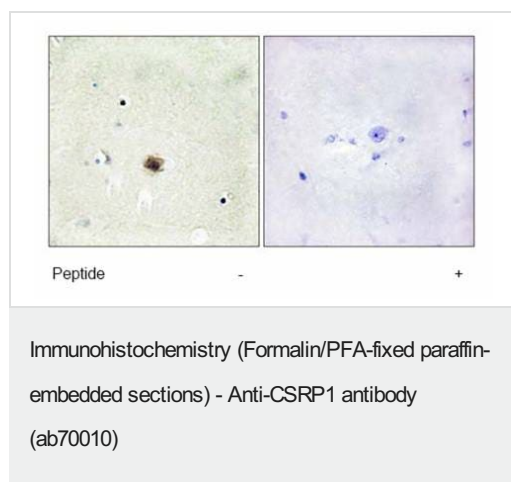
ターゲット情報

機能 Could play a role in neuronal development.

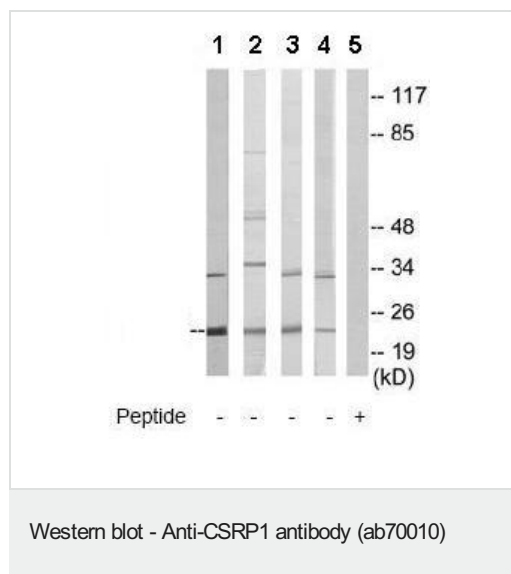
配列類似性 Contains 2 LIM zinc-binding domains.

細胞内局在 Nucleus.

画像



immunohistochemical analysis of paraffin embedded human brain tissue using ab70010 at 1/50 dilution. Right panel was treated with immunising peptide.



All lanes : Anti-CSRP1 antibody (ab70010) at 1/500 dilution

Lane 1 : HeLa cell extract

Lane 2 : HepG2 cell extract

Lane 3 : COLO cell extract

Lane 4 : Jurkat cell extract

Lane 5 : HeLa cell extract with immunising peptide at 10 µg

Lysates/proteins at 30 µg per lane.

Predicted band size: 21 kDa

Observed band size: 21 kDa

Additional bands at: 33 kDa, 50 kDa, 80 kDa. We are unsure as

to the identity of these extra bands.

Please note: All products are "FOR RESEARCH USE ONLY. NOT FOR USE IN DIAGNOSTIC PROCEDURES"

Our Abpromise to you: Quality guaranteed and expert technical support

- Replacement or refund for products not performing as stated on the datasheet
- Valid for 12 months from date of delivery
- Response to your inquiry within 24 hours
- We provide support in Chinese, English, French, German, Japanese and Spanish
- Extensive multi-media technical resources to help you
- We investigate all quality concerns to ensure our products perform to the highest standards

If the product does not perform as described on this datasheet, we will offer a refund or replacement. For full details of the Abpromise, please visit <https://www.abcam.co.jp/abpromise> or contact our technical team.

Terms and conditions

- Guarantee only valid for products bought direct from Abcam or one of our authorized distributors