

Anti-CSP-C antibody ab69876

[1 Abreviews](#) [1 References](#) [画像数 2](#)

製品の概要

製品名	Anti-CSP-C antibody
製品の詳細	Rabbit polyclonal to CSP-C
由来種	Rabbit
特異性	This antibody detects endogenous levels of total GZMH protein.
アプリケーション	適用あり: WB, ICC/IF
種交差性	交差種: Human
免疫原	Synthetic peptide corresponding to Human CSP-C (internal sequence).
ポジティブ・コントロール	A549 cells and extracts from K562 cells
特記事項	<p>The Life Science industry has been in the grips of a reproducibility crisis for a number of years. Abcam is leading the way in addressing this with our range of recombinant monoclonal antibodies and knockout edited cell lines for gold-standard validation. Please check that this product meets your needs before purchasing.</p> <p>If you have any questions, special requirements or concerns, please send us an inquiry and/or contact our Support team ahead of purchase. Recommended alternatives for this product can be found below, along with publications, customer reviews and Q&As</p>

製品の特性

製品の状態	Liquid
保存方法	Shipped at 4°C. Store at -20°C. Stable for 12 months at -20°C.
バッファー	<p>pH: 7.40</p> <p>Preservative: 0.02% Sodium azide</p> <p>Constituents: 0.87% Sodium chloride, 50% Glycerol (glycerin, glycerine), PBS</p>
精製度	Immunogen affinity purified
特記事項 (精製)	The antibody was affinity-purified from rabbit antiserum by affinity-chromatography using epitope-specific immunogen.
ポリ/モノ	ポリクローナル
アイソタイプ	IgG

The Abpromise guarantee Abpromise保証は、 次のテスト済みアプリケーションにおけるab69876の使用に適用されます
アプリケーションノートには、推奨の開始希釈率がありますが、適切な希釈率につきましてはご検討ください。

アプリケーション	Abreviews	特記事項
WB		
ICC/IF		

追加情報

ICC/IF: 1/500 - 1/1000.
 ELISA: 1/5000.
 WB: 1/500 - 1/1000. Detects bands of approximately 21 and 54 kDa (predicted molecular weight: 27 kDa).

Not yet tested in other applications.
 Optimal dilutions/concentrations should be determined by the end user.

ターゲット情報

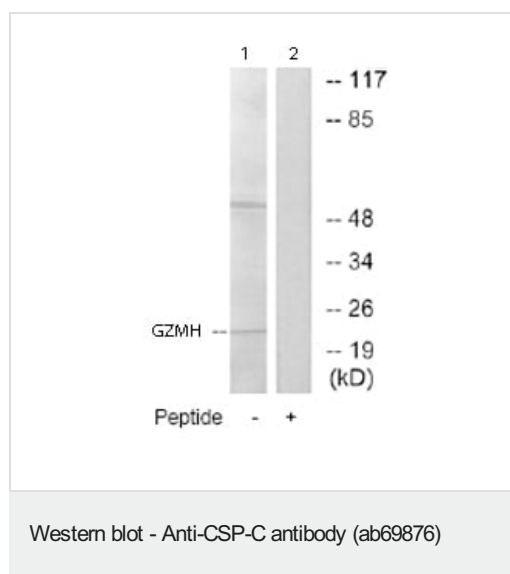
機能 Cytotoxic chymotrypsin-like serine protease with preference for bulky and aromatic residues at the P1 position and acidic residues at the P3' and P4' sites. Probably necessary for target cell lysis in cell-mediated immune responses. Participates in the antiviral response via direct cleavage of several proteins essential for viral replication.

組織特異性 Constitutively expressed in NK cells.

配列類似性 Belongs to the peptidase S1 family. Granzyme subfamily.
 Contains 1 peptidase S1 domain.

細胞内局在 Cytoplasmic granule. Cytoplasmic granules of cytolytic T-lymphocytes.

画像



All lanes : Anti-CSP-C antibody (ab69876) at 1/500 dilution

Lane 1 : Extracts from K562 cells

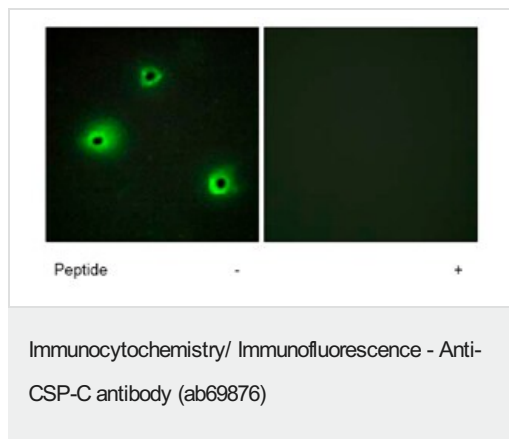
Lane 2 : Extracts from K562 cells with immunizing peptide at 10 µg

Lysates/proteins at 30 µg per lane.

Predicted band size: 27 kDa

Observed band size: 21 kDa

Additional bands at: 54 kDa. We are unsure as to the identity of these extra bands.



Immunofluorescence analysis of A549 cells using ab69876 at 1/500-1/1000 dilution.

Left image un-treated.

Right image treated with immunizing peptide.

Please note: All products are "FOR RESEARCH USE ONLY. NOT FOR USE IN DIAGNOSTIC PROCEDURES"

Our Abpromise to you: Quality guaranteed and expert technical support

- Replacement or refund for products not performing as stated on the datasheet
- Valid for 12 months from date of delivery
- Response to your inquiry within 24 hours
- We provide support in Chinese, English, French, German, Japanese and Spanish
- Extensive multi-media technical resources to help you
- We investigate all quality concerns to ensure our products perform to the highest standards

If the product does not perform as described on this datasheet, we will offer a refund or replacement. For full details of the Abpromise, please visit <https://www.abcam.co.jp/abpromise> or contact our technical team.

Terms and conditions

- Guarantee only valid for products bought direct from Abcam or one of our authorized distributors