


Anti-CSK antibody [EPR6771] ab125005

KO 評価済 リコンビナント RabMAb

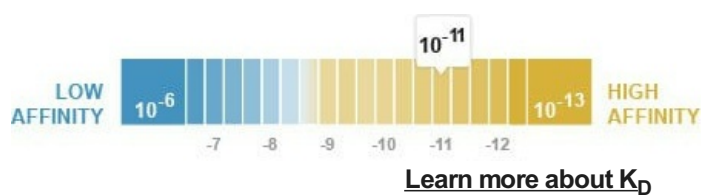
2 References 画像数 5

製品の概要

製品名	Anti-CSK antibody [EPR6771]
製品の詳細	Rabbit monoclonal [EPR6771] to CSK
由来種	Rabbit
アプリケーション	適用あり: WB, IHC-P 適用なし: Flow Cyt, ICC/IF or IP
種交差性	交差種: Mouse, Human 交差が予測される動物種: Rat 
免疫原	Synthetic peptide within Human CSK aa 50-150. The exact sequence is proprietary.
ポジティブ・コントロール	Jurkat, Ramos and RAW 264.7 cell lysates; Human tonsil tissue.
特記事項	<p>This product is a recombinant monoclonal antibody, which offers several advantages including:</p> <ul style="list-style-type: none"> - High batch-to-batch consistency and reproducibility - Improved sensitivity and specificity - Long-term security of supply - Animal-free production <p>For more information see here.</p> <p>Our RabMAb[®] technology is a patented hybridoma-based technology for making rabbit monoclonal antibodies. For details on our patents, please refer to RabMAb[®] patents.</p>

製品の特性

製品の状態	Liquid
保存方法	Shipped at 4°C. Store at -20°C. Stable for 12 months at -20°C.
解離定数 (K _D 値)	K _D = 5.10 x 10 ⁻¹¹ M



バッファー	pH: 7.20
-------	----------

	Preservative: 0.01% Sodium azide Constituents: 9% PBS, 40% Glycerol (glycerin, glycerine), 0.05% BSA, 50% Tissue culture supernatant
精製度	Protein A purified
ポリ/モノ	モノクローナル
クローン名	EPR6771
アイソタイプ	IgG

アプリケーション

The Abpromise guarantee **Abpromise保証は、** 次のテスト済みアプリケーションにおけるab125005の使用に適用されます
アプリケーションノートには、推奨の開始希釈率がありますが、適切な希釈率につきましてはご検討ください。

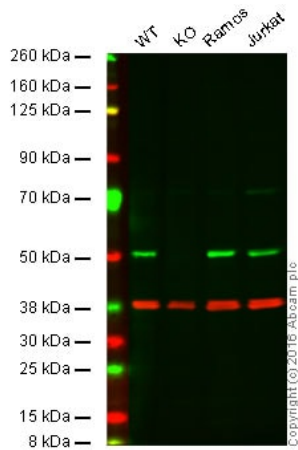
アプリケーション	Abreviews	特記事項
WB		1/1000 - 1/10000. Detects a band of approximately 50 kDa (predicted molecular weight: 50 kDa).
IHC-P		1/50 - 1/100. Perform heat mediated antigen retrieval before commencing with IHC staining protocol. Heat up to 98 degrees C, below boiling, and then let cool for 10-20 min.

追加情報 Is unsuitable for Flow Cyt, ICC/IF or IP.

ターゲット情報

機能	Specifically phosphorylates 'Tyr-504' on LCK, which acts as a negative regulatory site. Can also act on the LYN and FYN kinases.
組織特異性	Expressed in lung and macrophages.
配列類似性	Belongs to the protein kinase superfamily. Tyr protein kinase family. CSK subfamily. Contains 1 protein kinase domain. Contains 1 SH2 domain. Contains 1 SH3 domain.
翻訳後修飾	Autophosphorylation of Tyr-304 occurs only at abnormally high CSK concentrations in vitro.
細胞内局在	Cytoplasm. Cell membrane. Mainly cytoplasmic, also present in lipid rafts.

画像



Western blot - Anti-CSK antibody [EPR6771]
(ab125005)

Lane 1: Wild-type HAP1 cell lysate (20 µg)

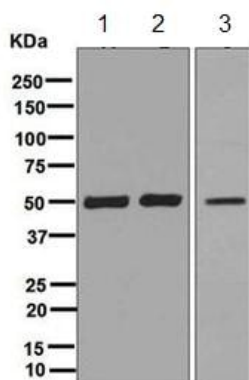
Lane 2: CSK knockout HAP1 cell lysate (20 µg)

Lane 3: Ramos cell lysate (20 µg)

Lane 4: Jurkat cell lysate (20 µg)

Lanes 1 - 4: Merged signal (red and green). Green - ab125005 observed at 50 kDa. Red - loading control, **ab8245**, observed at 37 kDa.

ab125005 was shown to specifically react with CSK when CSK knockout samples were used. Wild-type and CSK knockout samples were subjected to SDS-PAGE. ab125005 and **ab8245** (loading control to GAPDH) were diluted 1/1000 and 1/10000 respectively and incubated overnight at 4°C. Blots were developed with Goat anti-Rabbit IgG H&L (IRDye® 800CW) preadsorbed **ab216773** and Goat anti-Mouse IgG H&L (IRDye® 680RD) preadsorbed **ab216776** secondary antibodies at 1/10000 dilution for 1 h at room temperature before imaging.



Western blot - Anti-CSK antibody [EPR6771]
(ab125005)

All lanes : Anti-CSK antibody [EPR6771] (ab125005) at 1/1000 dilution

Lane 1 : Jurkat cell lysate

Lane 2 : Ramos cell lysate

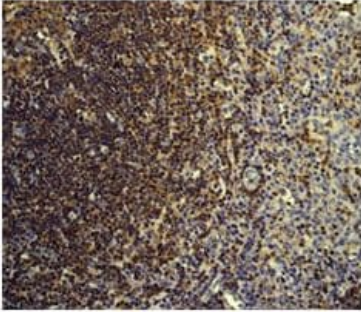
Lane 3 : RAW 264.7 cell lysate

Lysates/proteins at 10 µg per lane.

Secondary

All lanes : Goat anti-Rabbit HRP at 1/2000 dilution

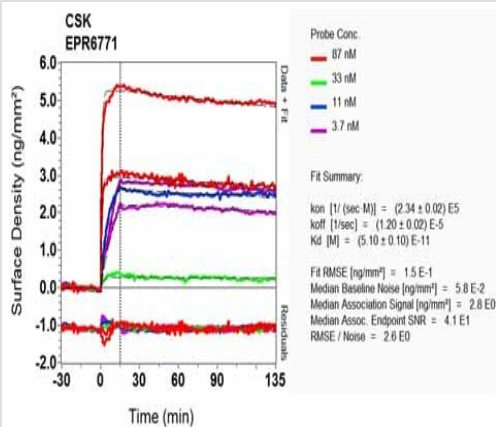
Predicted band size: 50 kDa



Immunohistochemistry (Formalin/PFA-fixed paraffin-embedded sections) - Anti-CSK antibody [EPR6771] (ab125005)

ab125005 at 1/50 dilution staining CSK in paraffin-embedded Human tonsil tissue by Immunohistochemistry.

Perform heat mediated antigen retrieval before commencing with IHC staining protocol.



OR-D Scanning - Anti-CSK antibody [EPR6771] (ab125005)

Equilibrium dissociation constant (K_D)

Learn more about K_D

[Click here to learn more about \$K_D\$](#)

Why choose a recombinant antibody?



Research with confidence
Consistent and reproducible results



Long-term and scalable supply
Recombinant technology



Success from the first experiment
Confirmed specificity



Ethical standards compliant
Animal-free production

Anti-CSK antibody [EPR6771] (ab125005)

Please note: All products are "FOR RESEARCH USE ONLY. NOT FOR USE IN DIAGNOSTIC PROCEDURES"

Our Abpromise to you: Quality guaranteed and expert technical support

- Replacement or refund for products not performing as stated on the datasheet
- Valid for 12 months from date of delivery
- Response to your inquiry within 24 hours
- We provide support in Chinese, English, French, German, Japanese and Spanish
- Extensive multi-media technical resources to help you
- We investigate all quality concerns to ensure our products perform to the highest standards

If the product does not perform as described on this datasheet, we will offer a refund or replacement. For full details of the Abpromise, please visit <https://www.abcam.co.jp/abpromise> or contact our technical team.

Terms and conditions

- Guarantee only valid for products bought direct from Abcam or one of our authorized distributors