

Anti-CSDE1/NRU antibody [EPR17414] ab201688

リコンビナント RabMAb

7 References [画像数 9](#)

製品の概要

製品名	Anti-CSDE1/NRU antibody [EPR17414]
製品の詳細	Rabbit monoclonal [EPR17414] to CSDE1/NRU
由来種	Rabbit
アプリケーション	適用あり: ICC/IF, IP, WB, IHC-P
種交差性	交差種: Mouse, Rat, Human
免疫原	Synthetic peptide. This information is proprietary to Abcam and/or its suppliers.
ポジティブ・コントロール	WB: K562, HEK293, Raw264.7 and HeLa cell lysate. Human testis, mouse and rat lysate. IHC-P: Human breast carcinoma and Human kidney tissue. ICC/IF: HeLa and MCF7 cells. IP: K562 cells.
特記事項	<p>This product is a recombinant monoclonal antibody, which offers several advantages including:</p> <ul style="list-style-type: none">- High batch-to-batch consistency and reproducibility- Improved sensitivity and specificity- Long-term security of supply- Animal-free production <p>For more information see here.</p> <p>Our RabMAb[®] technology is a patented hybridoma-based technology for making rabbit monoclonal antibodies. For details on our patents, please refer to RabMAb[®] patents.</p>

製品の特性

製品の状態	Liquid
保存方法	Shipped at 4°C. Store at +4°C short term (1-2 weeks). Upon delivery aliquot. Store at -20°C long term. Avoid freeze / thaw cycle.
バッファー	pH: 7.2 Preservative: 0.01% Sodium azide Constituents: PBS, 40% Glycerol, 0.05% BSA
精製度	Protein A purified
ポリ/モノ	モノクローナル
クローン名	EPR17414
アイソタイプ	IgG

アプリケーション

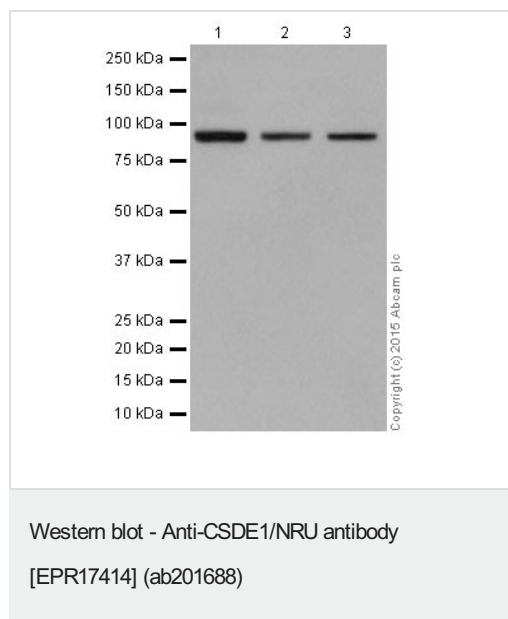
The Abpromise guarantee **Abpromise保証は、** 次のテスト済みアプリケーションにおけるab201688の使用に適用されず
アプリケーションノートには、推奨の開始希釈率がありますが、適切な希釈率につきましてはご確認ください。

アプリケーション	Abreviews	特記事項
ICC/IF		1/500.
IP		1/40.
WB		1/1000. Detects a band of approximately 89 kDa (predicted molecular weight: 89 kDa).
IHC-P		1/100. Perform heat mediated antigen retrieval with Tris/EDTA buffer pH 9.0 before commencing with IHC staining protocol.

ターゲット情報

機能	RNA-binding protein. Required for internal initiation of translation of human rhinovirus RNA. May be involved in translationally coupled mRNA turnover. Implicated with other RNA-binding proteins in the cytoplasmic deadenylation/translational and decay interplay of the FOS mRNA mediated by the major coding-region determinant of instability (mCRD) domain.
配列類似性	Contains 9 CSD (cold-shock) domains.
細胞内局在	Cytoplasm.

画像



All lanes : Anti-CSDE1/NRU antibody [EPR17414] (ab201688) at 1/10000 dilution

Lane 1 : K562 (Human chronic myelogenous leukemia cells from bone marrow) lysate

Lane 2 : HEK293 (Human embryonic kidney)

Lane 3 : HeLa (Human epithelial cells from cervix adenocarcinoma) lysate

Lysates/proteins at 20 µg per lane.

Secondary

All lanes : Goat Anti-Rabbit IgG, (H+L), Peroxidase conjugated at 1/1000 dilution

Predicted band size: 89 kDa

Observed band size: 89 kDa

Exposure time: 1 minute

Blocking/Dilution buffer: 5% NFDM/TBST.

Anti-CSDE1/NRU antibody [EPR17414] (ab201688) at 1/1000 dilution + Human testis at 10 µg

Secondary

Anti-Rabbit IgG (HRP), specific to the non-reduced form of IgG at 1/1000 dilution

Predicted band size: 89 kDa

Observed band size: 89 kDa

Exposure time: 3 minutes

Blocking/Dilution buffer: 5% NFDM/TBST.

All lanes : Anti-CSDE1/NRU antibody [EPR17414] (ab201688) at 1/1000 dilution

Lane 1 : Mouse brain

Lane 2 : Rat brain

Lane 3 : Raw264.7 (Mouse macrophage cells transformed with Abelson murine leukemia virus)

Lysates/proteins at 10 µg per lane.

Secondary

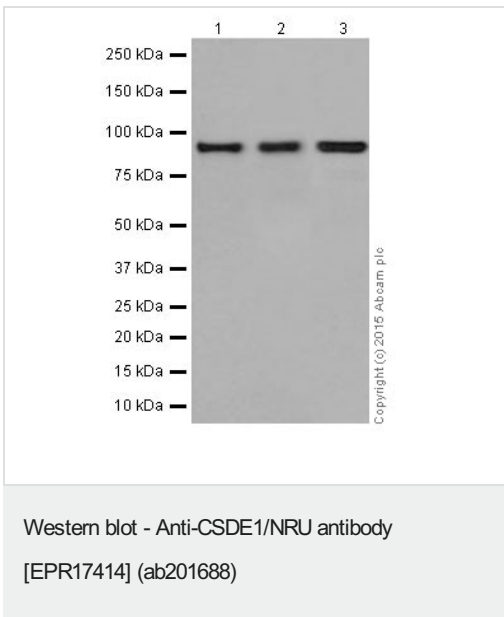
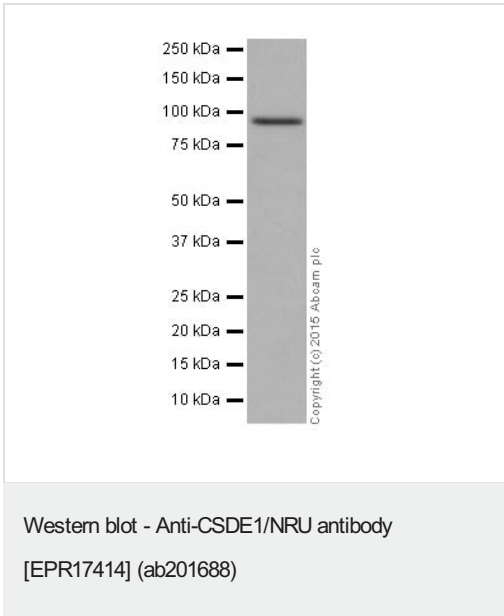
All lanes : Goat Anti-Rabbit IgG, (H+L), Peroxidase conjugated at 1/1000 dilution

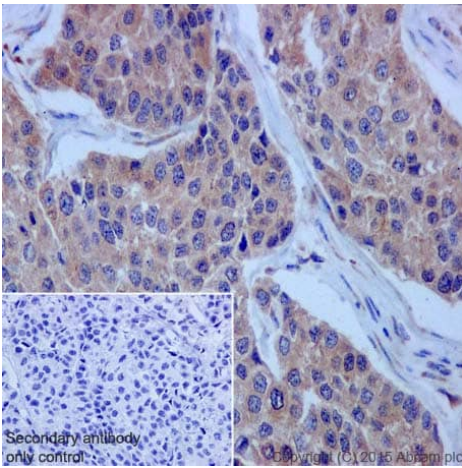
Predicted band size: 89 kDa

Observed band size: 89 kDa

Exposure time: 1 minute

Blocking/Dilution buffer: 5% NFDM/TBST.





Immunohistochemistry (Formalin/PFA-fixed paraffin-embedded sections) - Anti-CSDE1/NRU antibody [EPR17414] (ab201688)

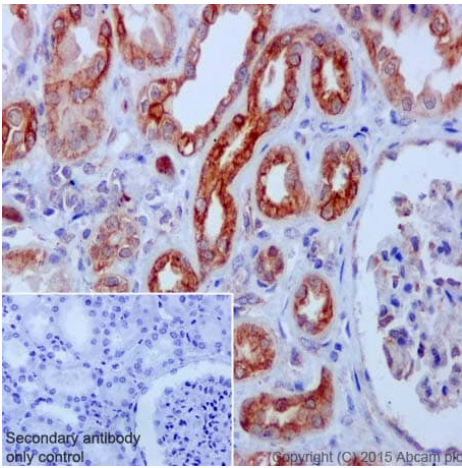
Immunohistochemical analysis of paraffin-embedded Human breast carcinoma tissue labeling CSDE1/NRU with ab201688 at 1/100 dilution, followed by Goat Anti-Rabbit IgG H&L (HRP) ([ab97051](#)) at 1/500 dilution.

Cytoplasmic staining on Human breast carcinoma tissue is observed.

Counter stained with Hematoxylin.

Negative control: Using PBS instead of primary antibody, secondary antibody is Goat Anti-Rabbit IgG H&L (HRP) ([ab97051](#)).

Perform heat mediated antigen retrieval with Tris/EDTA buffer pH 9.0 before commencing with IHC staining protocol.



Immunohistochemistry (Formalin/PFA-fixed paraffin-embedded sections) - Anti-CSDE1/NRU antibody [EPR17414] (ab201688)

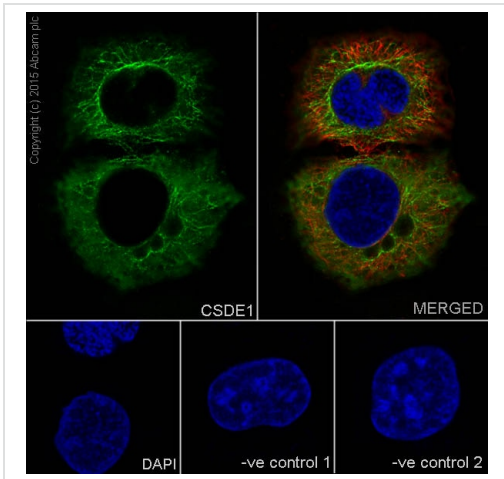
Immunohistochemical analysis of paraffin-embedded human kidney tissue labeling CSDE1/NRU with ab201688 at 1/100 dilution, followed by Goat Anti-Rabbit IgG H&L (HRP) ([ab97051](#)) at 1/500 dilution.

Cytoplasmic staining on Human kidney tissue is observed.

Counter stained with Hematoxylin.

Negative control: Using PBS instead of primary antibody, secondary antibody is Goat Anti-Rabbit IgG H&L (HRP) ([ab97051](#)).

Perform heat mediated antigen retrieval with Tris/EDTA buffer pH 9.0 before commencing with IHC staining protocol.



Immunocytochemistry/ Immunofluorescence - Anti-CSDE1/NRU antibody [EPR17414] (ab201688)

Immunofluorescent analysis of 4% paraformaldehyde-fixed, 0.1% Triton X-100 permeabilized HeLa (Human epithelial cells from cervix adenocarcinoma) cells labeling CSDE1/NRU with ab201688 at 1/500 dilution, followed by Goat anti-rabbit IgG (Alexa Fluor® 488) (**ab150077**) secondary antibody at 1/500 dilution (green).

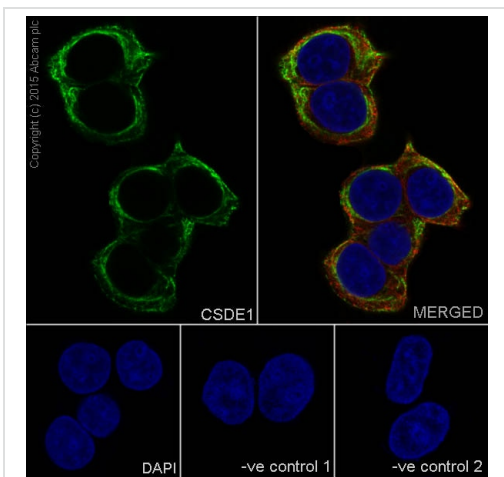
Confocal image showing cytoplasmic staining on HeLa cell line is observed.

The nuclear counter stain is DAPI (blue).

Tubulin is detected with **ab7291** (anti-Tubulin mouse mAb) at 1/1000 dilution and **ab150120** (AlexaFluor®594 Goat anti-Mouse secondary) at 1/500 dilution (red).

The negative controls are as follows;

1. ab201688 at 1/500 dilution followed by **ab150120** (AlexaFluor®594 Goat anti-Mouse secondary) at 1/500 dilution.
2. **ab7291** (anti-Tubulin mouse mAb) at 1/1000 dilution followed by **ab150077** (Alexa Fluor®488 Goat Anti-Rabbit IgG H&L) at 1/400 dilution.



Immunocytochemistry/ Immunofluorescence - Anti-CSDE1/NRU antibody [EPR17414] (ab201688)

Immunofluorescent analysis of 4% paraformaldehyde-fixed, 0.1% Triton X-100 permeabilized MCF7 (Human breast adenocarcinoma cell line) cells labeling CSDE1/NRU with ab201688 at 1/500 dilution, followed by Goat anti-rabbit IgG (Alexa Fluor® 488) (**ab150077**) secondary antibody at 1/500 dilution (green).

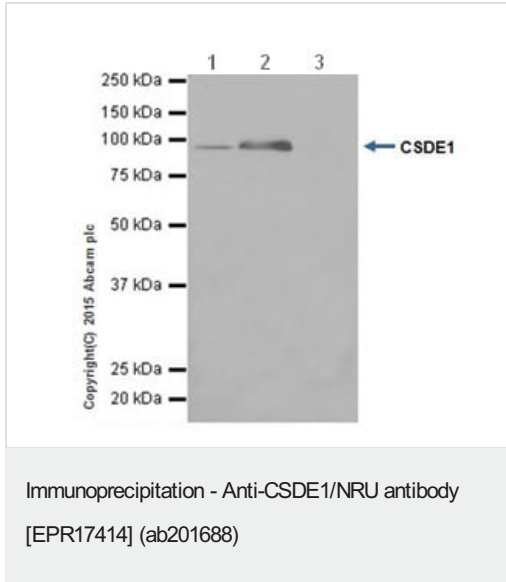
Confocal image showing cytoplasmic staining on MCF7 cell line is observed.

The nuclear counter stain is DAPI (blue).

Tubulin is detected with **ab7291** (anti-Tubulin mouse mAb) at 1/1000 dilution and **ab150120** (AlexaFluor®594 Goat anti-Mouse secondary) at 1/500 dilution (red).

The negative controls are as follows;

1. ab201688 at 1/500 dilution followed by **ab150120** (AlexaFluor®594 Goat anti-Mouse secondary) at 1/500 dilution.
2. **ab7291** (anti-Tubulin mouse mAb) at 1/1000 dilution followed by **ab150077** (Alexa Fluor®488 Goat Anti-Rabbit IgG H&L) at 1/400 dilution.



CSDE1/NRU was immunoprecipitated from 1mg of K562 (Human chronic myelogenous leukemia cells from bone marrow) whole cell extract with ab201688 at 1/40 dilution.

Western blot was performed from the immunoprecipitate using ab201688 at 1/1500 dilution.

VeriBlot for IP Detection Reagent (HRP) ([ab131366](#)) was used for detection at 1/1500 dilution.

Lane 1: K562 whole cell extract 10 µg (Input).





Lane 2: ab201688 IP in K562 whole cell extract.

Lane 3: Rabbit monoclonal IgG ([ab172730](#)) instead of [ab20688](#) in K562 whole cell extract.

Blocking and dilution buffer and concentration: 5% NFDm/TBST.

Exposure time: 1 second

Why choose a recombinant antibody?

 <p>Research with confidence Consistent and reproducible results</p>	 <p>Long-term and scalable supply Recombinant technology</p>
 <p>Success from the first experiment Confirmed specificity</p>	 <p>Ethical standards compliant Animal-free production</p>

Anti-CSDE1/NRU antibody [EPR17414] (ab201688)

Please note: All products are "FOR RESEARCH USE ONLY. NOT FOR USE IN DIAGNOSTIC PROCEDURES"

Our Abpromise to you: Quality guaranteed and expert technical support

- Replacement or refund for products not performing as stated on the datasheet
- Valid for 12 months from date of delivery
- Response to your inquiry within 24 hours

- We provide support in Chinese, English, French, German, Japanese and Spanish
- Extensive multi-media technical resources to help you
- We investigate all quality concerns to ensure our products perform to the highest standards

If the product does not perform as described on this datasheet, we will offer a refund or replacement. For full details of the Abpromise, please visit <https://www.abcam.co.jp/abpromise> or contact our technical team.

Terms and conditions

- Guarantee only valid for products bought direct from Abcam or one of our authorized distributors