

### Anti-CRMP5 antibody ab36203

★★★★★ [1 Abreviews](#) [6 References](#) [画像数 2](#)

#### 製品の概要

製品名	Anti-CRMP5 antibody
製品の詳細	Rabbit polyclonal to CRMP5
由来種	Rabbit
特異性	No cross reactivity was detected with CRMP1, CRMP2, CRMP3 or CRMP4.
アプリケーション	<b>適用あり:</b> WB, IHC-P
種交差性	<b>交差種:</b> Human
免疫原	A 15 residue synthetic peptide derived from C-terminal domain of human collapsing-response mediator.
特記事項	<p>The Life Science industry has been in the grips of a reproducibility crisis for a number of years. Abcam is leading the way in addressing this with our range of recombinant monoclonal antibodies and knockout edited cell lines for gold-standard validation. Please check that this product meets your needs before purchasing.</p> <p>If you have any questions, special requirements or concerns, please send us an inquiry and/or contact our Support team ahead of purchase. Recommended alternatives for this product can be found below, along with publications, customer reviews and Q&amp;As</p>

#### 製品の特性

製品の状態	Liquid
保存方法	Shipped at 4°C. Store at +4°C short term (1-2 weeks). Upon delivery aliquot. Store at -20°C long term.
バッファー	Constituent: Whole serum
精製度	Whole antiserum
ポリ/モノ	ポリクローナル
アイソタイプ	IgG

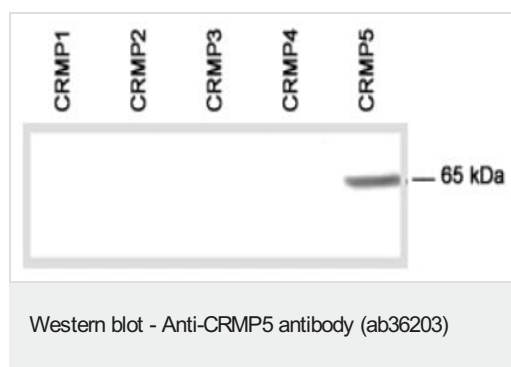
#### アプリケーション

**The Abpromise guarantee**      **Abpromise保証は、**次のテスト済みアプリケーションにおけるab36203の使用に適用されます  
アプリケーションノートには、推奨の開始希釈率がありますが、適切な希釈率につきましてはご検討ください。

アプリケーション	Abreviews	特記事項
WB	★★★★★ (1)	1/2000. Predicted molecular weight: 65 kDa.
IHC-P		Use at an assay dependent concentration.

## ターゲット情報

## 画像



**All lanes :** Anti-CRMP5 antibody (ab36203)

**Lane 1 :** E.coli lysate transformed with cDNA of human CRMP1

**Lane 2 :** E.coli lysate transformed with cDNA of human CRMP2

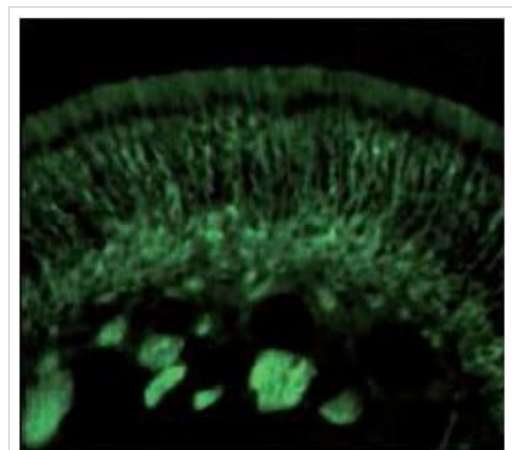
**Lane 3 :** E.coli lysate transformed with cDNA of human CRMP3

**Lane 4 :** E.coli lysate transformed with cDNA of human CRMP4

**Lane 5 :** E.coli lysate transformed with cDNA of human CRMP5

**Predicted band size:** 65 kDa

**Observed band size:** 65 kDa



Ab36203 staining human CRMP5 in olfactory receptor neurons within the olfactory mucosa by immunohistochemistry.

Immunohistochemistry (Formalin/PFA-fixed paraffin-embedded sections) - Anti-CRMP5 antibody (ab36203)

**Please note:** All products are "FOR RESEARCH USE ONLY. NOT FOR USE IN DIAGNOSTIC PROCEDURES"

**Our Abpromise to you: Quality guaranteed and expert technical support**

- Replacement or refund for products not performing as stated on the datasheet
- Valid for 12 months from date of delivery
- Response to your inquiry within 24 hours
- We provide support in Chinese, English, French, German, Japanese and Spanish
- Extensive multi-media technical resources to help you
- We investigate all quality concerns to ensure our products perform to the highest standards

If the product does not perform as described on this datasheet, we will offer a refund or replacement. For full details of the Abpromise, please visit <https://www.abcam.co.jp/abpromise> or contact our technical team.

#### **Terms and conditions**

---

- Guarantee only valid for products bought direct from Abcam or one of our authorized distributors