

# Anti-CRMP2 (phospho T514) antibody ab62478

[12 References](#) [画像数 4](#)

### 製品の概要

---

製品名	Anti-CRMP2 (phospho T514) antibody
製品の詳細	Rabbit polyclonal to CRMP2 (phospho T514)
由来種	Rabbit
アプリケーション	<b>適用あり:</b> ELISA, ICC/IF, IHC-P, WB
種交差性	<b>交差種:</b> Mouse, Rat, Human
免疫原	Synthetic peptide corresponding to Human CRMP2 aa 450-550 (phospho T514). Database link: <a href="#">Q16555</a>
特記事項	<p>The Life Science industry has been in the grips of a reproducibility crisis for a number of years. Abcam is leading the way in addressing this with our range of recombinant monoclonal antibodies and knockout edited cell lines for gold-standard validation. Please check that this product meets your needs before purchasing.</p> <p>If you have any questions, special requirements or concerns, please send us an inquiry and/or contact our Support team ahead of purchase. Recommended alternatives for this product can be found below, along with publications, customer reviews and Q&amp;As</p>

### 製品の特性

---

製品の状態	Liquid
保存方法	Shipped at 4°C. Store at -20°C. Stable for 12 months at -20°C.
バッファー	pH: 7.40 Preservative: 0.02% Sodium azide Constituents: PBS, 50% Glycerol (glycerin, glycerine), 0.87% Sodium chloride
精製度	Without Mg <sup>2+</sup> and Ca <sup>2+</sup> Immunogen affinity purified
特記事項 (精製)	ab62478 was affinity purified from rabbit antiserum by affinity chromatography using epitope specific phosphopeptide. The antibody against non phosphopeptide was removed by chromatography using non phosphopeptide corresponding to the phosphorylation site.
ポリ/モノ	ポリクローナル
アイソタイプ	IgG

## アプリケーション

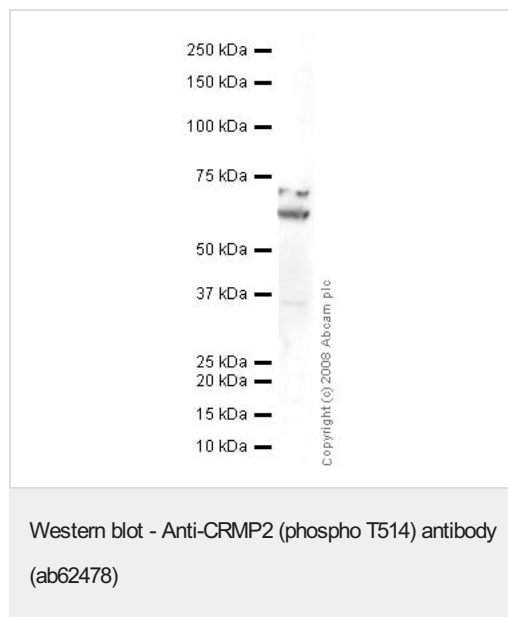
The Abpromise guarantee **Abpromise保証は、次のテスト済みアプリケーションにおけるab62478の使用に適用されず**  
アプリケーションノートには、推奨の開始希釈率がありますが、適切な希釈率につきましてはご確認ください。

アプリケーション	Abreviews	特記事項
ELISA		Use at an assay dependent concentration.
ICC/IF		1/500 - 1/1000.
IHC-P		1/50 - 1/100.
WB		Use a concentration of 1 µg/ml. Detects a band of approximately 63 kDa (predicted molecular weight: 63 kDa).

## ターゲット情報

機能	Necessary for signaling by class 3 semaphorins and subsequent remodeling of the cytoskeleton. Plays a role in axon guidance, neuronal growth cone collapse and cell migration.
組織特異性	Ubiquitous.
配列類似性	Belongs to the DHOase family. Hydantoinase/dihydropyrimidinase subfamily.
翻訳後修飾	3F4, a monoclonal antibody which strongly stains neurofibrillary tangles in Alzheimer disease brains, specifically labels DPYSL2 when phosphorylated on Ser-518, Ser-522 and Thr-509.
細胞内局在	Cytoplasm.

## 画像



Anti-CRMP2 (phospho T514) antibody (ab62478) at 1 µg/ml +  
Human brain tissue lysate - total protein (**ab29466**) at 10 µg

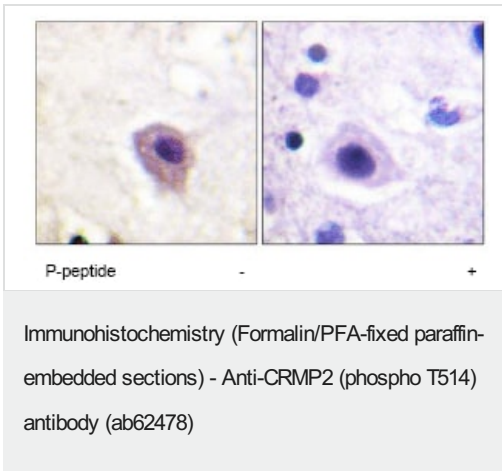
### Secondary

Goat polyclonal to Rabbit IgG - H&L - Pre-Adsorbed (HRP) at  
1/3000 dilution

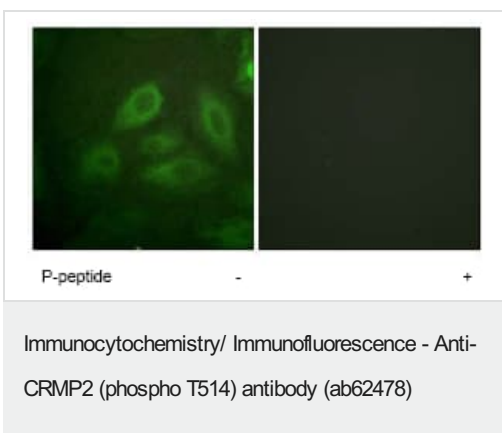
**Predicted band size:** 63 kDa

**Observed band size:** 63 kDa

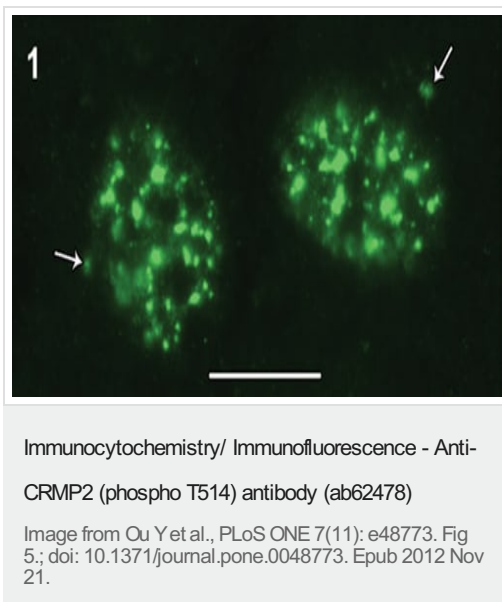
**Additional bands at:** 70 kDa. We are unsure as to the identity of these extra bands.



ab62478, at 1/50 dilution, staining CRMP2 in paraffin embedded human brain tissue by Immunohistochemistry in the absence (left image) or presence (right image) of the immunising peptide.



ab62478, at 1/500 dilution, staining CRMP2 in HeLa cells by Immunofluorescence, in the absence or presence of the immunising peptide.



Immunofluorescence analysis of RPE (human retinal pigmented epithelium) cells, staining CRMP2 (phospho T514) with ab62478. Cells were fixed in cold methanol and incubated with primary antibody, followed by an AlexaFluor<sup>®</sup>488-conjugated anti rabbit IgG.

**Please note:** All products are "FOR RESEARCH USE ONLY. NOT FOR USE IN DIAGNOSTIC PROCEDURES"

#### Our Abpromise to you: Quality guaranteed and expert technical support

- Replacement or refund for products not performing as stated on the datasheet

- Valid for 12 months from date of delivery
- Response to your inquiry within 24 hours
  
- We provide support in Chinese, English, French, German, Japanese and Spanish
- Extensive multi-media technical resources to help you
- We investigate all quality concerns to ensure our products perform to the highest standards

If the product does not perform as described on this datasheet, we will offer a refund or replacement. For full details of the Abpromise, please visit <https://www.abcam.co.jp/abpromise> or contact our technical team.

### **Terms and conditions**

---

- Guarantee only valid for products bought direct from Abcam or one of our authorized distributors