




Anti-CRM1 antibody ab84375

1 [References](#) **2** [画像数](#)

製品の概要

製品名	Anti-CRM1 antibody
製品の詳細	Rabbit polyclonal to CRM1
由来種	Rabbit
アプリケーション	適用あり: IHC-P
種交差性	交差種: Mouse, Human 交差が予測される動物種: Chimpanzee, Rhesus monkey, Gorilla, Orangutan 
免疫原	Synthetic peptide corresponding to a region within C terminal amino acids 1025-1071 (FAGEDTSDLF LEEREIALRQ ADEEKHKRQM SVPGIFNPHE IPEEMCD) of human CRM1 (NP_003391.1).  Run BLAST with Expasy  Run BLAST with NCBI
ポジティブ・コントロール	Human breast tumor; mouse squamous cell carcinoma.
特記事項	<p>The Life Science industry has been in the grips of a reproducibility crisis for a number of years. Abcam is leading the way in addressing this with our range of recombinant monoclonal antibodies and knockout edited cell lines for gold-standard validation. Please check that this product meets your needs before purchasing.</p> <p>If you have any questions, special requirements or concerns, please send us an inquiry and/or contact our Support team ahead of purchase. Recommended alternatives for this product can be found below, along with publications, customer reviews and Q&As</p>

製品の特性

製品の状態	Liquid
保存方法	Shipped at 4°C. Upon delivery aliquot and store at -20°C. Avoid freeze / thaw cycles.
バッファー	pH: 6.8 Preservative: 0.09% Sodium azide Constituents: 0.1% BSA, Tris buffered saline
精製度	Immunogen affinity purified
特記事項 (精製)	The antibody was affinity purified using an epitope specific to CRM1 immobilized on solid support.
ポリ/モノ	ポリクローナル

アプリケーション

The Abpromise guarantee **Abpromise保証は、** 次のテスト済みアプリケーションにおけるab84375の使用に適用されます
アプリケーションノートには、推奨の開始希釈率がありますが、適切な希釈率につきましてはご確認ください。

アプリケーション	Abreviews	特記事項
IHC-P		

追加情報

IHC-P: 1/100 - 1/500.
Epitope exposure is recommended.
Epitope exposure with citrate buffer will enhance staining.

Likely to work with frozen sections.

Not yet tested in other applications.
Optimal dilutions/concentrations should be determined by the end user.

ターゲット情報

機能

Mediates the nuclear export of cellular proteins (cargos) bearing a leucine-rich nuclear export signal (NES) and of RNAs. In the nucleus, in association with RANBP3, binds cooperatively to the NES on its target protein and to the GTPase RAN in its active GTP-bound form (Ran-GTP). Docking of this complex to the nuclear pore complex (NPC) is mediated through binding to nucleoporins. Upon transit of an nuclear export complex into the cytoplasm, disassembling of the complex and hydrolysis of Ran-GTP to Ran-GDP (induced by RANBP1 and RANGAP1, respectively) cause release of the cargo from the export receptor. The directionality of nuclear export is thought to be conferred by an asymmetric distribution of the GTP- and GDP-bound forms of Ran between the cytoplasm and nucleus. Involved in U3 snoRNA transport from Cajal bodies to nucleoli. Binds to late precursor U3 snoRNA bearing a TMG cap. Several viruses, among them HIV-1, HTLV-1 and influenza A use it to export their unspliced or incompletely spliced RNAs out of the nucleus. Interacts with, and mediates the nuclear export of HIV-1 Rev and HTLV-1 Rex proteins. Involved in HTLV-1 Rex multimerization.

組織特異性

Expressed in heart, brain, placenta, lung, liver, skeletal muscle, pancreas, spleen, thymus, prostate, testis, ovary, small intestine, colon and peripheral blood leukocytes. Not expressed in the kidney.

配列類似性

Belongs to the exportin family.
Contains 10 HEAT repeats.
Contains 1 importin N-terminal domain.

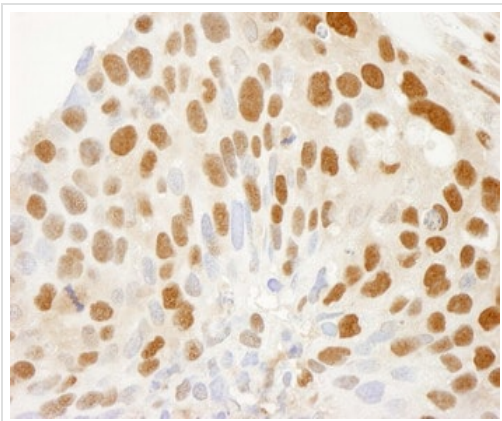
翻訳後修飾

Phosphorylated upon DNA damage, probably by ATM or ATR.

細胞内局在

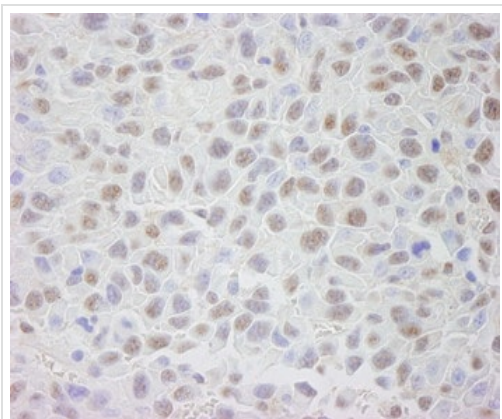
Cytoplasm. Nucleus > nucleoplasm. Nucleus > Cajal body. Nucleus > nucleolus. Located in the nucleoplasm, Cajal bodies and nucleoli. Shuttles between the nucleus/nucleolus and the cytoplasm.

画像



Immunohistochemistry (Formalin/PFA-fixed paraffin-embedded sections) - Anti-CRM1 antibody (ab84375)

ab84375, at a 1/250 dilution, staining CRM1 in formalin fixed, paraffin embedded human breast tumor section by immunohistochemistry.
Detection: DAB staining



Immunohistochemistry (Formalin/PFA-fixed paraffin-embedded sections) - Anti-CRM1 antibody (ab84375)

ab84375, at a 1/250 dilution, staining CRM1 in formalin fixed, paraffin embedded mouse squamous cell carcinoma by immunohistochemistry. Detection: DAB staining

Please note: All products are "FOR RESEARCH USE ONLY. NOT FOR USE IN DIAGNOSTIC PROCEDURES"

Our Abpromise to you: Quality guaranteed and expert technical support

- Replacement or refund for products not performing as stated on the datasheet
- Valid for 12 months from date of delivery
- Response to your inquiry within 24 hours
- We provide support in Chinese, English, French, German, Japanese and Spanish
- Extensive multi-media technical resources to help you
- We investigate all quality concerns to ensure our products perform to the highest standards

If the product does not perform as described on this datasheet, we will offer a refund or replacement. For full details of the Abpromise, please visit <https://www.abcam.co.jp/abpromise> or contact our technical team.

Terms and conditions

- Guarantee only valid for products bought direct from Abcam or one of our authorized distributors