

# Anti-CRLF2 antibody ab109626

**2 References**   [画像数 3](#)

### 製品の概要

|              |   |
|--------------|---|
| 製品名          | Anti-CRLF2 antibody   |
| 製品の詳細        | Rabbit polyclonal to CRLF2  |
| 由来種          | Rabbit  |
| アプリケーション     | <b>適用あり:</b> WB, IHC-P  |
| 種交差性         | <b>交差種:</b> Human   |
| 免疫原          | KLH conjugated synthetic peptide of 19 amino acids in length from near the center of Human CRLF2.   |
| ポジティブ・コントロール | Human liver tissue, Human kidney tissue   |
| 特記事項         | <p>The Life Science industry has been in the grips of a reproducibility crisis for a number of years. Abcam is leading the way in addressing this with our range of recombinant monoclonal antibodies and knockout edited cell lines for gold-standard validation. Please check that this product meets your needs before purchasing.</p> <p>If you have any questions, special requirements or concerns, please send us an inquiry and/or contact our Support team ahead of purchase. Recommended alternatives for this product can be found below, along with publications, customer reviews and Q&amp;As</p> |

### 製品の特性

|        |   |
|--------|---|
| 製品の状態  | Liquid  |
| 保存方法   | Shipped at 4°C. Store at +4°C short term (1-2 weeks). Store at -20°C or -80°C. Avoid freeze / thaw cycle. |
| バッファー  | <p>pH: 7.4</p> <p>Preservative: 0.02% Sodium azide</p> <p>Constituent: PBS</p>                            |
| 精製度    | Immunogen affinity purified   |
| ポリ/モノ  | ポリクローナル   |
| アイソタイプ | IgG   |

### アプリケーション

## The Abpromise guarantee

**Abpromise保証は、次のテスト済みアプリケーションにおけるab109626の使用に適用されます**

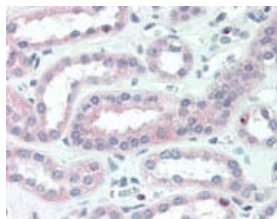
アプリケーションノートには、推奨の開始希釈率がありますが、適切な希釈率につきましてはご検討ください。

| アプリケーション | Abreviews | 特記事項   |
|----------|-----------|--|
| WB       |           | Use a concentration of 1 µg/ml. Predicted molecular weight: 42 kDa.  |
| IHC-P    |           | Use a concentration of 5 µg/ml. Perform heat mediated antigen retrieval with citrate buffer pH 6 before commencing with IHC staining protocol. |

## ターゲット情報

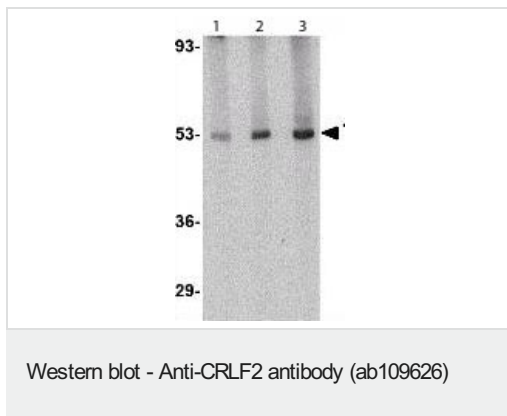
|       |   |
|-------|---|
| 機能    | Receptor for thymic stromal lymphopoietin (TSLP). Forms a functional complex with TSLP and IL7R which is capable of stimulating cell proliferation through activation of STAT3 and STAT5. Also activates JAK2 (By similarity). Implicated in the development of the hematopoietic system. |
| 組織特異性 | Expressed in heart, skeletal muscle, kidney and adult and fetal liver. Primarily expressed in dendrites and monocytes. Weakly expressed in T-cells.   |
| 配列類似性 | Belongs to the type I cytokine receptor family. Type 5 subfamily. Contains 1 fibronectin type-III domain.   |
| ドメイン  | The WSXWS motif appears to be necessary for proper protein folding and thereby efficient intracellular transport and cell-surface receptor binding.<br>The box 1 motif is important for association with JAKs.  |
| 細胞内局在 | Secreted and Cell membrane.   |

## 画像



Human kidney tissue (formalin-fixed, paraffin-embedded) stained with ab109626 at a concentration of 5 µg/ml.

Immunohistochemistry (Formalin/PFA-fixed paraffin-embedded sections) - Anti-CRLF2 antibody (ab109626)



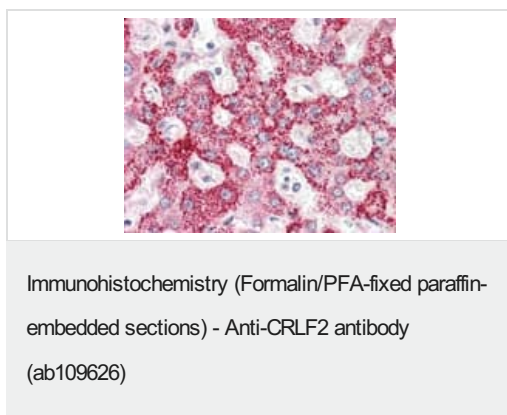
**Lane 1 :** Anti-CRLF2 antibody (ab109626) at 0.5 µg/ml

**Lane 2 :** Anti-CRLF2 antibody (ab109626) at 1 µg/ml

**Lane 3 :** Anti-CRLF2 antibody (ab109626) at 2 µg/ml

**All lanes :** Human liver tissue lysate

**Predicted band size:** 42 kDa



Human liver tissue (formalin-fixed, paraffin-embedded) stained with ab109626 at a concentration of 5 µg/ml.

**Please note:** All products are "FOR RESEARCH USE ONLY. NOT FOR USE IN DIAGNOSTIC PROCEDURES"

### Our Abpromise to you: Quality guaranteed and expert technical support

- Replacement or refund for products not performing as stated on the datasheet
- Valid for 12 months from date of delivery
- Response to your inquiry within 24 hours
- We provide support in Chinese, English, French, German, Japanese and Spanish
- Extensive multi-media technical resources to help you
- We investigate all quality concerns to ensure our products perform to the highest standards

If the product does not perform as described on this datasheet, we will offer a refund or replacement. For full details of the Abpromise, please visit <https://www.abcam.co.jp/abpromise> or contact our technical team.

### Terms and conditions

- Guarantee only valid for products bought direct from Abcam or one of our authorized distributors