

### Anti-Crk p38 antibody [EP242Y] ab45136

リコンビナント **RabMAb**

★★★★★ **1 Abreviews** **2 References** 画像数 3

#### 製品の概要

製品名	Anti-Crk p38 antibody [EP242Y]
製品の詳細	Rabbit monoclonal [EP242Y] to Crk p38
由来種	Rabbit
アプリケーション	<b>適用あり:</b> WB, ICC/IF, Flow Cyt (Intra) <b>適用なし:</b> Flow Cyt or IP
種交差性	<b>交差種:</b> Mouse, Rat, Human
免疫原	Synthetic peptide. This information is proprietary to Abcam and/or its suppliers.
ポジティブ・コントロール	WB: K-562, C6, and NIH/3T3 whole cell lysates. ICC/IF: HepG2 cells. Flow Cyt (Intra): HeLa cells.
特記事項	This product has switched from a hybridoma to recombinant production method on 9th June 2023. This product is a recombinant monoclonal antibody, which offers several advantages including: - High batch-to-batch consistency and reproducibility - Improved sensitivity and specificity - Long-term security of supply - Animal-free production For more information <a href="#">see here</a> . Our RabMAb <sup>®</sup> technology is a patented hybridoma-based technology for making rabbit monoclonal antibodies. For details on our patents, please refer to <a href="#">RabMAb<sup>®</sup> patents</a> .

#### 製品の特性

製品の状態	Liquid
保存方法	Shipped at 4°C. Upon delivery aliquot and store at -20°C. Avoid freeze / thaw cycles.
バッファー	pH: 7.20 Preservative: 0.01% Sodium azide Constituents: 0.05% BSA, 40% Glycerol (glycerin, glycerine), 59% PBS
精製度	Protein A purified
ポリ/モノ	モノクローナル
クローン名	EP242Y
アイソタイプ	IgG

## アプリケーション

**The Abpromise guarantee**      **Abpromise保証は、次のテスト済みアプリケーションにおけるab45136の使用に適用されます**  
アプリケーションノートには、推奨の開始希釈率がありますが、適切な希釈率につきましてはご検討ください。

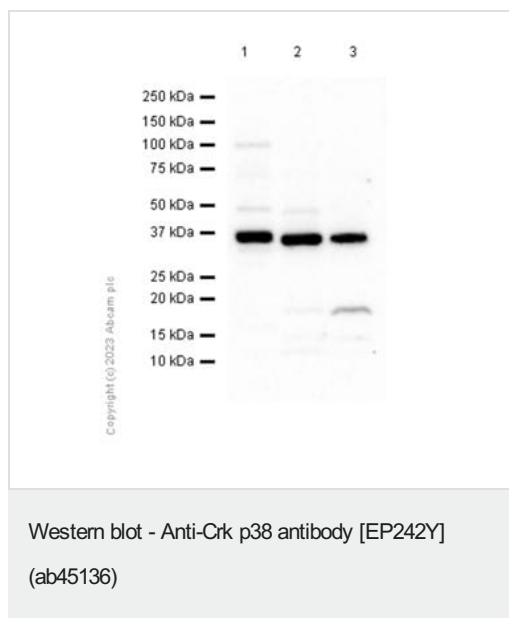
アプリケーション	Abreviews	特記事項
WB	★★★★★ (1)	1/1000. Detects a band of approximately 37 kDa (predicted molecular weight: 34 kDa).
ICC/IF		1/50.
Flow Cyt (Intra)		1/50.

**追加情報**      Is unsuitable for Flow Cyt or IP.

## ターゲット情報

<b>機能</b>	The Crk-I and Crk-II forms differ in their biological activities. Crk-II has less transforming activity than Crk-I. Crk-II mediates attachment-induced MAPK8 activation, membrane ruffling and cell motility in a Rac-dependent manner. Involved in phagocytosis of apoptotic cells and cell motility via its interaction with DOCK1 and DOCK4.
<b>配列類似性</b>	Belongs to the CRK family. Contains 1 SH2 domain. Contains 2 SH3 domains.
<b>ドメイン</b>	The C-terminal SH3 domain function as a negative modulator for transformation and the N-terminal SH3 domain appears to function as a positive regulator for transformation. The SH2 domain mediates interaction with SHB.
<b>翻訳後修飾</b>	Phosphorylation of Crk-II (40 kDa) gives rise to a 42 kDa form. Phosphorylated on Tyr-221 upon cell adhesion. Results in the negative regulation of the association with SH2- and SH3-binding partners, possibly by the formation of an intramolecular interaction of phosphorylated Tyr-221 with the SH2 domain. This leads finally to the down-regulation of the Crk signaling pathway.
<b>細胞内局在</b>	Cytoplasm. Cell membrane. Translocated to the plasma membrane upon cell adhesion.

## 画像



**All lanes :** Anti-Crk p38 antibody [EP242Y] (ab45136) at 1/1000 dilution

**Lane 1 :** K-562 (Human chronic myelogenous leukemia lymphoblast) whole cell lysate

**Lane 2 :** C6 (Rat glial tumor glial cell) whole cell lysate

**Lane 3 :** NIH/3T3 (Mouse embryonic fibroblast) whole cell lysate

Lysates/proteins at 15 µg per lane.

### Secondary

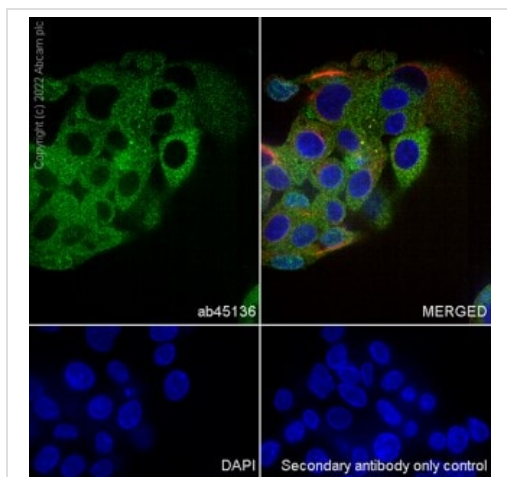
**All lanes :** Goat Anti-Rabbit IgG H&L (HRP) ([ab97051](#)) at 1/20000 dilution

**Predicted band size:** 34 kDa

**Observed band size:** 37 kDa

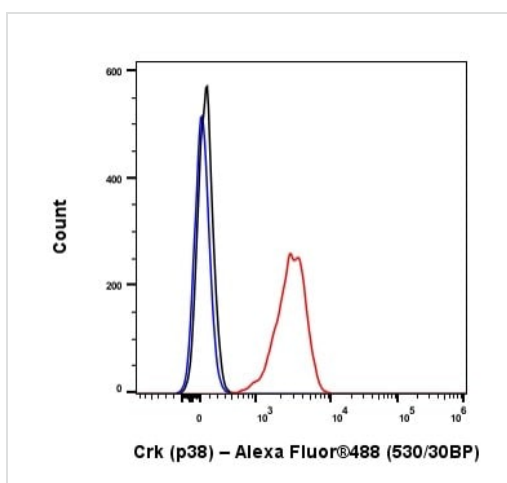
**Exposure time:** 40 seconds

Blocking and diluting buffer and concentration: 5% NFDM/TBST.



Immunocytochemistry/ Immunofluorescence - Anti-Crk p38 antibody [EP242Y] (ab45136)

Immunofluorescent analysis of 4% Paraformaldehyde-fixed, 0.1% TritonX-100 permeabilized HepG2 cells labelling Crk with ab45136 at 1/50 dilution. Confocal image showing cytoplasmic and membranous staining in subsets of HepG2 cells. **ab195889** AlexaFluor® 594-conjugated Anti-alpha Tubulin was used to counterstain tubulin at 1/200 dilution. The Nuclear counterstain was DAPI (Blue). Secondary antibody only control: Secondary antibody is **ab150081** Goat Anti-Rabbit IgG H&L (Alexa Fluor® 488) preadsorbed at 1/1000 dilution.



Flow Cytometry (Intracellular) - Anti-Crk p38 antibody [EP242Y] (ab45136)

Flow cytometric analysis of 4% paraformaldehyde fixed 90% methanol permeabilized HeLa cells labelling Crk with ab45136 at 1/50 dilution (Red) compared with an isotype control (Black) and an unlabelled control (Cell without incubation with primary antibody and secondary antibody (Blue)). A Goat Anti-Rabbit IgG (Alexa Fluor® 488, **ab150081**) was used as the secondary antibody.

**Please note:** All products are "FOR RESEARCH USE ONLY. NOT FOR USE IN DIAGNOSTIC PROCEDURES"

### Our Abpromise to you: Quality guaranteed and expert technical support

- Replacement or refund for products not performing as stated on the datasheet
- Valid for 12 months from date of delivery
- Response to your inquiry within 24 hours
- We provide support in Chinese, English, French, German, Japanese and Spanish
- Extensive multi-media technical resources to help you
- We investigate all quality concerns to ensure our products perform to the highest standards

If the product does not perform as described on this datasheet, we will offer a refund or replacement. For full details of the Abpromise, please visit <https://www.abcam.co.jp/abpromise> or contact our technical team.

## Terms and conditions

---

- Guarantee only valid for products bought direct from Abcam or one of our authorized distributors