

Anti-Cripto1/CRIPTO antibody [mAbcam60626] ab60626

画像数 1

製品の概要

製品名	Anti-Cripto1/CRIPTO antibody [mAbcam60626]
製品の詳細	Mouse monoclonal [mAbcam60626] to Cripto1/CRIPTO
由来種	Mouse
アプリケーション	適用あり: WB
種交差性	交差種: Recombinant fragment 交差が予測される動物種: Mouse, Cow, Human 
免疫原	Synthetic peptide corresponding to Human Cripto1/CRIPTO aa 100 to the C-terminus conjugated to keyhole limpet haemocyanin. (Peptide available as ab23310)
ポジティブ・コントロール	This antibody gave a positive signal in Cripto1/CRIPTO (Human) Recombinant Protein.
特記事項	<p>This antibody clone is manufactured by Abcam. If you require a custom buffer formulation or conjugation for your experiments, please contact orders@abcam.com.</p> <p>The Life Science industry has been in the grips of a reproducibility crisis for a number of years. Abcam is leading the way in addressing this with our range of recombinant monoclonal antibodies and knockout edited cell lines for gold-standard validation. Please check that this product meets your needs before purchasing.</p> <p>If you have any questions, special requirements or concerns, please send us an inquiry and/or contact our Support team ahead of purchase. Recommended alternatives for this product can be found below, along with publications, customer reviews and Q&As</p>

製品の特性

製品の状態	Liquid
保存方法	Shipped at 4°C. Store at +4°C short term (1-2 weeks). Upon delivery aliquot. Store at -20°C or -80°C. Avoid freeze / thaw cycle.
バッファー	pH: 7.40 Preservative: 0.02% Sodium azide Constituents: 6.97% L-Arginine, PBS
精製度	Protein G purified
ポリ/モノ	モノクローナル

クローン名 mAbcam60626
ミエローマ Sp2/0-Ag14
アイソタイプ IgG2a

アプリケーション

The Abpromise guarantee **Abpromise保証は、次のテスト済みアプリケーションにおけるab60626の使用に適用されず**
アプリケーションノートには、推奨の開始希釈率がありますが、適切な希釈率につきましてはご検討ください。

アプリケーション	Abreviews	特記事項
WB		

追加情報

WB: Use at a concentration of 10 µg/ml. Detects a band of approximately 21 kDa using a Cripto1 Recombinant Protein (predicted molecular weight: 16-20 kDa).

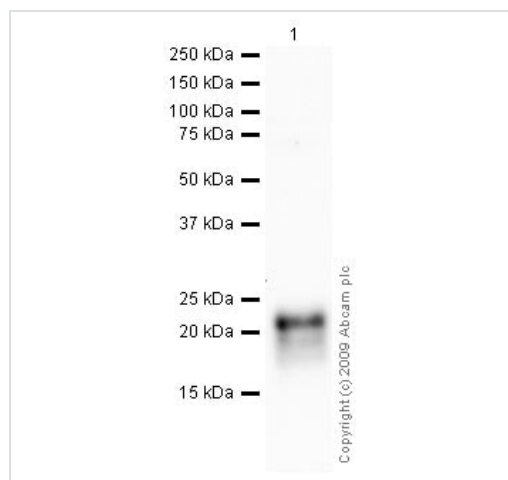
Not yet tested in other applications.

Optimal dilutions/concentrations should be determined by the end user.

ターゲット情報

機能 Could play a role in the determination of the epiblastic cells that subsequently give rise to the mesoderm.
組織特異性 Preferentially expressed in gastric and colorectal carcinomas than in their normal counterparts.
配列類似性 Contains 1 EGF-like domain.
細胞内局在 Cell membrane.

画像



Anti-Cripto1/CRIPTO antibody [mAbcam60626] (ab60626) at 10 µg/ml + Cripto1/CRIPTO Recombinant Protein at 0.1 µg

Secondary

Goat polyclonal to Mouse IgG - H&L - Pre-Adsorbed (HRP) at 1/3000 dilution

Performed under reducing conditions.

Predicted band size: 16-20 kDa

Observed band size: 21 kDa

Western blot - Anti-Cripto1/CRIPTO antibody
[mAbcam60626] (ab60626)

Please note: All products are "FOR RESEARCH USE ONLY. NOT FOR USE IN DIAGNOSTIC PROCEDURES"

Our Abpromise to you: Quality guaranteed and expert technical support

- Replacement or refund for products not performing as stated on the datasheet
- Valid for 12 months from date of delivery
- Response to your inquiry within 24 hours

- We provide support in Chinese, English, French, German, Japanese and Spanish
- Extensive multi-media technical resources to help you
- We investigate all quality concerns to ensure our products perform to the highest standards

If the product does not perform as described on this datasheet, we will offer a refund or replacement. For full details of the Abpromise, please visit <https://www.abcam.co.jp/abpromise> or contact our technical team.

Terms and conditions

- Guarantee only valid for products bought direct from Abcam or one of our authorized distributors