


Anti-CRHR2 antibody ab104368

★★★★★ [1 Abreviews](#) [4 References](#) [画像数 1](#)

製品の概要

製品名	Anti-CRHR2 antibody
製品の詳細	Rabbit polyclonal to CRHR2
由来種	Rabbit
アプリケーション	適用あり: WB
種交差性	交差種: Mouse, Rat 交差が予測される動物種: Horse, Hamster, Cow, Dog, Human 
免疫原	Synthetic peptide corresponding to Rat CRHR2 aa 50-150 conjugated to keyhole limpet haemocyanin. (Peptide available as ab125890)
ポジティブ・コントロール	This antibody gave a positive signal in the following tissue lysates: Rat Brain; Rat Forebrain; Rat Dorsal Root Ganglion; Mouse Dopaminergic Nucleus.
特記事項	<p>The Life Science industry has been in the grips of a reproducibility crisis for a number of years. Abcam is leading the way in addressing this with our range of recombinant monoclonal antibodies and knockout edited cell lines for gold-standard validation. Please check that this product meets your needs before purchasing.</p> <p>If you have any questions, special requirements or concerns, please send us an inquiry and/or contact our Support team ahead of purchase. Recommended alternatives for this product can be found below, along with publications, customer reviews and Q&As</p>

製品の特性

製品の状態	Liquid
保存方法	Shipped at 4°C. Store at +4°C short term (1-2 weeks). Upon delivery aliquot. Store at -20°C or -80°C. Avoid freeze / thaw cycle.
バッファー	pH: 7.40 Preservative: 0.02% Sodium azide Constituents: 1% BSA, PBS Batches of this product that have a concentration < 1mg/ml may have BSA added as a stabilising agent. If you would like information about the formulation of a specific lot, please contact our scientific support team who will be happy to help.

精製度	Immunogen affinity purified
ポリ/モノ	ポリクローナル
アイソタイプ	IgG

アプリケーション

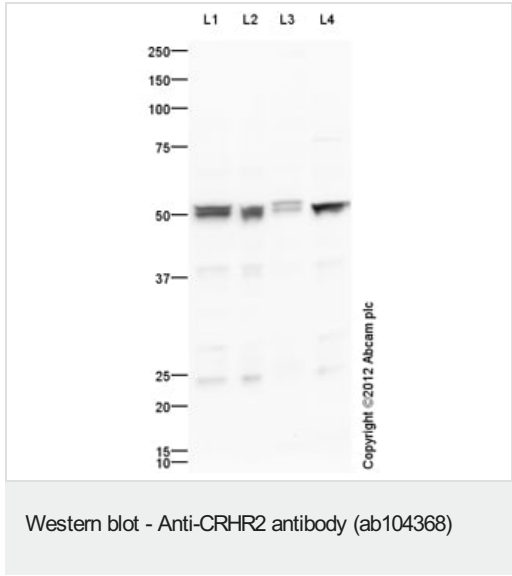
The Abpromise guarantee **Abpromise保証は、**次のテスト済みアプリケーションにおけるab104368の使用に適用されます
 アプリケーションノートには、推奨の開始希釈率がありますが、適切な希釈率につきましてはご検討ください。

アプリケーション	Abreviews	特記事項
WB	★★★★★ (1)	Use a concentration of 1 µg/ml. Detects a band of approximately 51,54 kDa (predicted molecular weight: 48 kDa).

ターゲット情報

機能	This is a receptor for corticotropin releasing factor. Shows high-affinity CRF binding. Also binds to urocortin I, II and III. The activity of this receptor is mediated by G proteins which activate adenylyl cyclase.
配列類似性	Belongs to the G-protein coupled receptor 2 family.
細胞内局在	Cell membrane.

画像



All lanes : Anti-CRHR2 antibody (ab104368) at 1 µg/ml

- Lane 1 :** Brain (Rat) Tissue Lysate
- Lane 2 :** Rat Forebrain
- Lane 3 :** Dorsal Root Ganglia (Rat) Tissue Lysate
- Lane 4 :** Dopaminergic nucleus Mouse Tissue Lysate

Lysates/proteins at 10 µg per lane.

Secondary
All lanes : Goat Anti-Rabbit IgG H&L (HRP) preadsorbed
 ([ab97080](#)) at 1/5000 dilution

Developed using the ECL technique.

Performed under reducing conditions.

Predicted band size: 48 kDa
Observed band size: 51,54 kDa

Exposure time: 30 seconds

CRHR2 contains a number of potential glycosylation sites (SwissProt) which may explain its migration at a higher molecular weight than predicted. This antibody was raised against an immunogen that is predicted to recognize both alpha and beta isoforms of Corticotropin Releasing Factor Receptor 2. The predicted molecular weights of the alpha and beta isoforms are 48 kDa and 50 kDa respectively.

Please note: All products are "FOR RESEARCH USE ONLY. NOT FOR USE IN DIAGNOSTIC PROCEDURES"

Our Abpromise to you: Quality guaranteed and expert technical support

- Replacement or refund for products not performing as stated on the datasheet
- Valid for 12 months from date of delivery
- Response to your inquiry within 24 hours
- We provide support in Chinese, English, French, German, Japanese and Spanish
- Extensive multi-media technical resources to help you
- We investigate all quality concerns to ensure our products perform to the highest standards

If the product does not perform as described on this datasheet, we will offer a refund or replacement. For full details of the Abpromise, please visit <https://www.abcam.co.jp/abpromise> or contact our technical team.

Terms and conditions

- Guarantee only valid for products bought direct from Abcam or one of our authorized distributors