




Anti-CRF1/CRHR1 antibody ab77686

5 References **画像数 3**

製品の概要

製品名	Anti-CRF1/CRHR1 antibody
製品の詳細	Goat polyclonal to CRF1/CRHR1
由来種	Goat
アプリケーション	適用あり: WB, ICC/IF
種交差性	交差種: Mouse, Rat, Human 交差が予測される動物種: Rhesus monkey 
免疫原	Synthetic peptide corresponding to Human CRF1/CRHR1 aa 107-117 (internal sequence). Sequence: C-NEEKKSKVHYH Database link: NP_004373.2 <div>  Run BLAST with  Run BLAST with </div>
特記事項	<p>The Life Science industry has been in the grips of a reproducibility crisis for a number of years. Abcam is leading the way in addressing this with our range of recombinant monoclonal antibodies and knockout edited cell lines for gold-standard validation. Please check that this product meets your needs before purchasing.</p> <p>If you have any questions, special requirements or concerns, please send us an inquiry and/or contact our Support team ahead of purchase. Recommended alternatives for this product can be found below, along with publications, customer reviews and Q&As</p>

製品の特性

製品の状態	Liquid
保存方法	Shipped at 4°C. Upon delivery aliquot and store at -20°C. Avoid repeated freeze / thaw cycles.
バッファー	pH: 7.30 Preservative: 0.02% Sodium azide Constituents: 0.5% BSA, 99% Tris buffered saline
精製度	Immunogen affinity purified
特記事項 (精製)	ab77686 was purified from goat serum by ammonium sulphate precipitation followed by antigen affinity chromatography using the immunizing peptide.
ポリ/モノ	ポリクローナル

アイソタイプIgG

アプリケーション

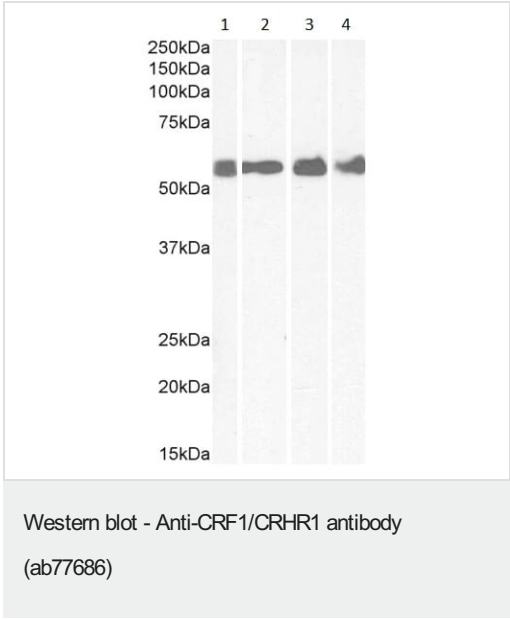
The Abpromise guarantee **Abpromise保証は、次のテスト済みアプリケーションにおけるab77686の使用に適用されます**
アプリケーションノートには、推奨の開始希釈率がありますが、適切な希釈率につきましてはご検討ください。

アプリケーション	Abreviews	特記事項
WB		Use a concentration of 0.1 - 0.3 µg/ml. Detects a band of approximately 60 kDa (predicted molecular weight: 48 kDa). 1 hour primary incubation is recommended for this product.
ICC/IF		Use a concentration of 0.3 µg/ml.

ターゲット情報

機能	This is a receptor for corticotropin releasing factor. Shows high-affinity CRF binding. The activity of this receptor is mediated by G proteins which activate adenylyl cyclase.
組織特異性	Predominantly expressed in the cerebellum, pituitary, cerebral cortex and olfactory lobe.
配列類似性	Belongs to the G-protein coupled receptor 2 family.
翻訳後修飾	C-terminal Ser or Thr residues may be phosphorylated.
細胞内局在	Cell membrane.

画像



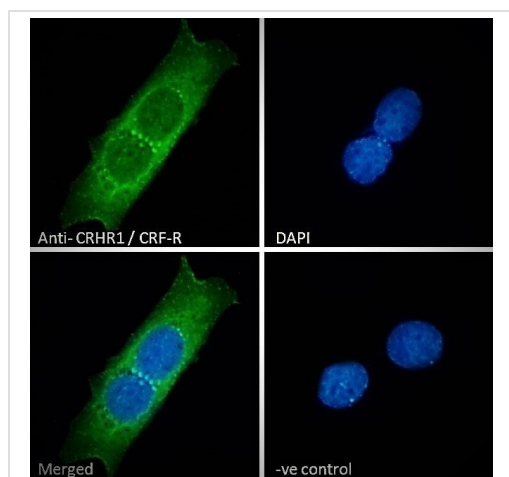
All lanes : Anti-CRF1/CRHR1 antibody (ab77686) at 1 µg/ml

- Lane 1 :** Human colon tissue lysate in RIPA buffer
- Lane 2 :** Human cerebellum tissue lysate in RIPA buffer
- Lane 3 :** Rat brain tissue lysate in RIPA buffer
- Lane 4 :** Mouse spinal cord tissue lysate in RIPA buffer

Lysates/proteins at 35 µg per lane.

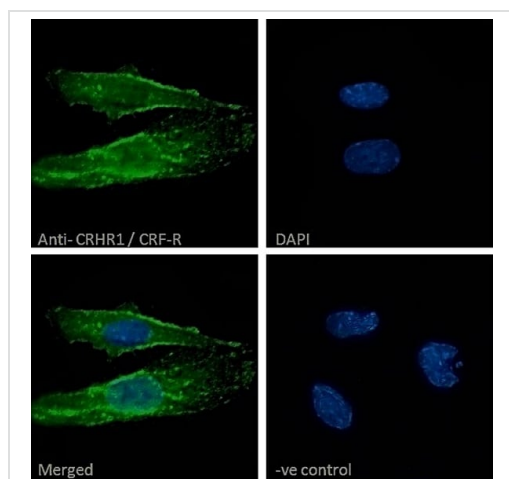
Predicted band size: 48 kDa

Incubated with the primary antibody for 1 hour. Detected by chemiluminescence.



Immunocytochemistry/ Immunofluorescence - Anti-CRF1/CRHR1 antibody (ab77686)

Immunocytochemistry/immunofluorescence analysis of MCF7 cells labelling CRF1 with ab77686 at 10µg/mL. Cells were fixed with 4% paraformaldehyde and permeabilized with 0.15% Triton X-100. Anti-goat Alexa Fluor® 488 antibody was used as the secondary antibody (green) showing cytoplasmic, and vesicle staining. Nuclear DNA was labelled with DAPI (blue). Negative control: Unimmunized goat IgG (10µg/mL) followed by Alexa Fluor® 488 secondary antibody (2µg/mL).



Immunocytochemistry/ Immunofluorescence - Anti-CRF1/CRHR1 antibody (ab77686)

Immunocytochemistry/immunofluorescence analysis of Neuro2a cells labelling CRF1 with ab77686 at 10µg/mL. Cells were fixed with 4% paraformaldehyde and permeabilized with 0.15% Triton X-100. Anti-goat Alexa Fluor® 488 antibody at 2ug/ml was used as the secondary antibody (green) showing plasma membrane, and vesicle staining. Nuclear DNA was labelled with DAPI (blue). Negative control: Unimmunized goat IgG (10ug/ml) followed by Alexa Fluor® 488 secondary antibody (2ug/ml).

Please note: All products are "FOR RESEARCH USE ONLY. NOT FOR USE IN DIAGNOSTIC PROCEDURES"

Our Abpromise to you: Quality guaranteed and expert technical support

- Replacement or refund for products not performing as stated on the datasheet
- Valid for 12 months from date of delivery
- Response to your inquiry within 24 hours
- We provide support in Chinese, English, French, German, Japanese and Spanish
- Extensive multi-media technical resources to help you
- We investigate all quality concerns to ensure our products perform to the highest standards

If the product does not perform as described on this datasheet, we will offer a refund or replacement. For full details of the Abpromise, please visit <https://www.abcam.co.jp/abpromise> or contact our technical team.

Terms and conditions

- Guarantee only valid for products bought direct from Abcam or one of our authorized distributors