

### Anti-CRF antibody ab80360

画像数 1

#### 製品の概要

製品名	Anti-CRF antibody
製品の詳細	Chicken polyclonal to CRF
由来種	Chicken
アプリケーション	<b>適用あり:</b> WB
種交差性	<b>交差種:</b> Human <b>交差が予測される動物種:</b> Mouse, Rat, Dog, Pig 
免疫原	Recombinant fragment corresponding to Human CRF aa 146-196. Sequence: EAPERERRSEPPISLDLTFHLLREVLEMARAEQLAQQAHSN RKLMEIIG K <div>  <a href="#">Run BLAST with</a>  <a href="#">Run BLAST with</a> </div>
ポジティブ・コントロール	E. coli derived CRF fusion protein.
特記事項	<p>The Life Science industry has been in the grips of a reproducibility crisis for a number of years. Abcam is leading the way in addressing this with our range of recombinant monoclonal antibodies and knockout edited cell lines for gold-standard validation. Please check that this product meets your needs before purchasing.</p> <p>If you have any questions, special requirements or concerns, please send us an inquiry and/or contact our Support team ahead of purchase. Recommended alternatives for this product can be found below, along with publications, customer reviews and Q&amp;As</p>

#### 製品の特性

製品の状態	Liquid
保存方法	Shipped at 4°C. Upon delivery aliquot and store at -20°C. Avoid freeze / thaw cycles.
バッファー	Constituent: 2.68% PBS
精製度	Immunogen affinity purified
ポリ/モノ	ポリクローナル
アイソタイプ	IgY

#### アプリケーション

**The Abpromise guarantee**      Abpromise保証は、次のテスト済みアプリケーションにおけるab80360の使用に適用されます  
 アプリケーションノートには、推奨の開始希釈率がありますが、適切な希釈率につきましてはご検討ください。

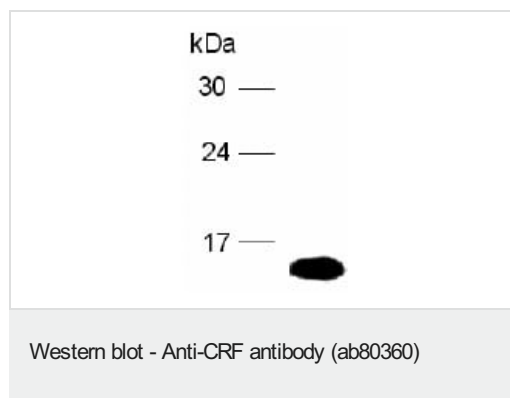
アプリケーション	Abreviews	特記事項
WB		1/3000. Predicted molecular weight: 21 kDa.

## ターゲット情報

**関連性**      CRF precursor is a 41-amino acid peptide derived from a 196-amino acid preprohormone. CRF is a neuroendocrine hormone secreted by the paraventricular nucleus (PVN) of the hypothalamus and is a key player in the hypothalamic pituitary adrenal axis. It is also synthesized in peripheral tissues, such as T lymphocytes and is highly expressed in the placenta. Neuronal CRF is important in a variety of diverse roles including, memory, depression, stress, kidney function, parturition, metabolism and feeding (to mention a few).

**細胞内局在**      Cytoplasmic and Secreted

## 画像



Anti-CRF antibody (ab80360) at 1/3000 dilution + E. coli derived CRF fusion protein at 0.4 µg

### Secondary

goat-anti-IgY/Fc-HRP at 1/10000 dilution

Developed using the ECL technique.

**Predicted band size:** 21 kDa

**Observed band size:** 15 kDa

**Please note:** All products are "FOR RESEARCH USE ONLY. NOT FOR USE IN DIAGNOSTIC PROCEDURES"

## Our Abpromise to you: Quality guaranteed and expert technical support

- Replacement or refund for products not performing as stated on the datasheet
- Valid for 12 months from date of delivery
- Response to your inquiry within 24 hours
- We provide support in Chinese, English, French, German, Japanese and Spanish
- Extensive multi-media technical resources to help you
- We investigate all quality concerns to ensure our products perform to the highest standards

If the product does not perform as described on this datasheet, we will offer a refund or replacement. For full details of the Abpromise, please visit <https://www.abcam.co.jp/abpromise> or contact our technical team.

#### **Terms and conditions**

---

- Guarantee only valid for products bought direct from Abcam or one of our authorized distributors