

Anti-CREBBP antibody [CBP5I001] ab50702

KO 評価済

★★★★★ [1 Abreviews](#) [12 References](#) [画像数 6](#)

製品の概要

製品名	Anti-CREBBP antibody [CBP5I001]
製品の詳細	Mouse monoclonal [CBP5I001] to CREBBP
由来種	Mouse
アプリケーション	適用あり: IHC-P, WB, ICC/IF
種交差性	交差種: Mouse, Human
免疫原	Recombinant full length protein corresponding to Human CREBBP.
ポジティブ・コントロール	HeLa whole cell lysate (ab150035); NIH3T3 whole cell lysate. IHC-P: Human pancreas FFPE tissue sections.
特記事項	<p>The Life Science industry has been in the grips of a reproducibility crisis for a number of years. Abcam is leading the way in addressing this with our range of recombinant monoclonal antibodies and knockout edited cell lines for gold-standard validation. Please check that this product meets your needs before purchasing.</p> <p>If you have any questions, special requirements or concerns, please send us an inquiry and/or contact our Support team ahead of purchase. Recommended alternatives for this product can be found below, along with publications, customer reviews and Q&As</p>

製品の特性

製品の状態	Liquid
保存方法	Shipped at 4°C. Store at +4°C short term (1-2 weeks). Upon delivery aliquot. Store at -20°C or -80°C. Avoid freeze / thaw cycle.
バッファー	<p>pH: 7.40</p> <p>Preservative: 0.05% Sodium azide</p> <p>Constituents: PBS, 1% BSA</p>
精製度	Protein G purified
特記事項 (精製)	This antibody was purified using protein G column chromatography from culture supernatant of hybridoma cultured in a medium containing bovine IgG depleted (approximately 95%) fetal bovine serum, and filtered through a 0.22 µm membrane.
ポリ/モノ	モノクローナル

クローン名 CBP5I001
アイソタイプ IgG1

アプリケーション

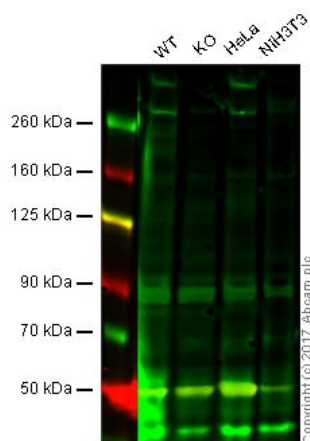
The Abpromise guarantee **Abpromise保証は、** 次のテスト済みアプリケーションにおけるab50702の使用に適用されます
アプリケーションノートには、推奨の開始希釈率がありますが、適切な希釈率につきましてはご検討ください。

アプリケーション	Abreviews	特記事項
IHC-P	★★★★★ (1)	Use a concentration of 10 µg/ml. Perform heat mediated antigen retrieval with citrate buffer pH 6 before commencing with IHC staining protocol.
WB		1/50 - 1/100. Predicted molecular weight: 265 kDa.
ICC/IF		1/5.

ターゲット情報

機能	Acetylates histones, giving a specific tag for transcriptional activation. Also acetylates non-histone proteins, like NCOA3 coactivator. Binds specifically to phosphorylated CREB and enhances its transcriptional activity toward cAMP-responsive genes. Acts as a coactivator of ALX1 in the presence of EP300.
関連疾患	Note=Chromosomal aberrations involving CREBBP may be a cause of acute myeloid leukemias. Translocation t(8;16)(p11;p13) with MYST3/MOZ; translocation t(11;16)(q23;p13.3) with MLL/HRX; translocation t(10;16)(q22;p13) with MYST4/MORF. MYST3-CREBBP may induce leukemia by inhibiting RUNX1-mediated transcription. Defects in CREBBP are a cause of Rubinstein-Taybi syndrome type 1 (RSTS1) [MIM:180849]. RSTS1 is an autosomal dominant disorder characterized by craniofacial abnormalities, broad thumbs, broad big toes, mental retardation and a propensity for development of malignancies.
配列類似性	Contains 1 bromo domain. Contains 1 KIX domain. Contains 2 TAZ-type zinc fingers. Contains 1 ZZ-type zinc finger.
ドメイン	The KIX domain mediates binding to HIV-1 Tat.
翻訳後修飾	Methylation of the KIX domain by CARM1 blocks association with CREB. This results in the blockade of CREB signaling, and in activation of apoptotic response. Phosphorylated upon DNA damage, probably by ATM or ATR. Sumoylation negatively regulates transcriptional activity via the recruitment of DAAX.
細胞内局在	Cytoplasm. Nucleus. Recruited to nuclear bodies by SS18L1/CREST. In the presence of ALX1 relocalizes from the cytoplasm to the nucleus.

画像



Western blot - Anti-CREBBP antibody [CBP51001] (ab50702)

Lane 1: Wild-type HAP1 whole cell lysate (40 µg)

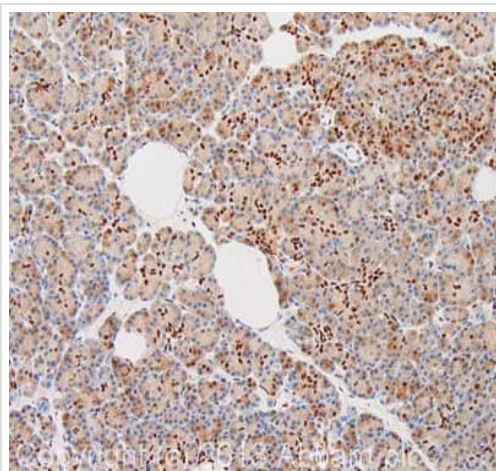
Lane 2: CREBBP knockout HAP1 whole cell lysate (40 µg)

Lane 3: HeLa whole cell lysate (40 µg)

Lane 4: NIH3T3 whole cell lysate (40 µg)

Lanes 1 - 4: Merged signal (red and green). Green - ab50702 observed at 265 kDa. Red - loading control, **ab176560**, observed at 50 kDa.

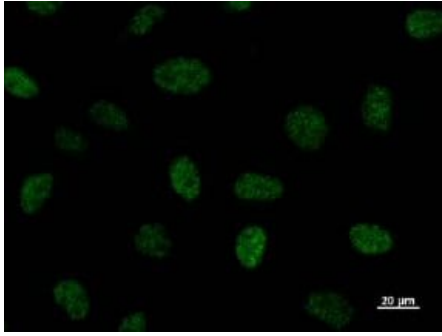
ab50702 was shown to specifically recognize CREBBP in wild-type HAP1 cells along with additional cross-reactive bands. No band was observed when CREBBP knockout samples were examined. Wild-type and CREBBP knockout samples were subjected to SDS-PAGE. Ab50702 and **ab176560** (Rabbit anti-alpha Tubulin loading control) were incubated overnight at 4°C at 1/100 dilution and 1/10,000 dilution respectively. Blots were developed with Goat anti-Mouse IgG H&L (IRDye® 800CW) preabsorbed **ab216772** and Goat anti-Rabbit IgG H&L (IRDye® 680RD) preabsorbed **ab216777** secondary antibodies at 1/10,000 dilution for 1 hour at room temperature before imaging.



Immunohistochemistry (Formalin/PFA-fixed paraffin-embedded sections) - Anti-CREBBP antibody [CBP51001] (ab50702)

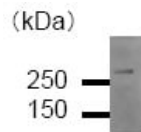
IHC image of CREBBP staining in human pancreas formalin fixed paraffin embedded tissue section, performed on a Leica Bond system using the standard protocol F. The section was pre-treated using heat mediated antigen retrieval with sodium citrate buffer (pH6, epitope retrieval solution 1) for 20 mins. The section was then incubated with ab50702, 10µg/ml, for 15 mins at room temperature and detected using an HRP conjugated compact polymer system. DAB was used as the chromogen. The section was then counterstained with haematoxylin and mounted with DPX.

For other IHC staining systems (automated and non-automated) customers should optimize variable parameters such as antigen retrieval conditions, primary antibody concentration and antibody incubation times.



Immunocytochemistry/ Immunofluorescence - Anti-CREBBP antibody [CBP5I001] (ab50702)

Staining of HeLa cell lysate with ab50702 at a dilution of 1/5 and Goat anti-mouse secondary at 1/200.



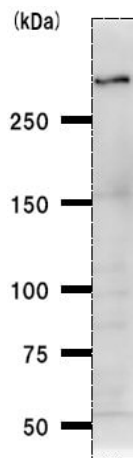
Western blot - Anti-CREBBP antibody [CBP5I001] (ab50702)

Anti-CREBBP antibody [CBP5I001] (ab50702) at 1/30 dilution + RIPA lysate of HeLa cells at 500 μg

Secondary

Mouse IgG antibody at 1/2500 dilution

Predicted band size: 265 kDa



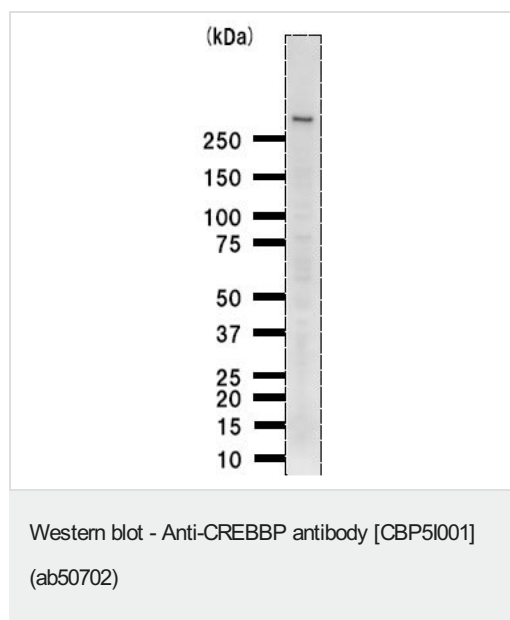
Western blot - Anti-CREBBP antibody [CBP5I001] (ab50702)

Anti-CREBBP antibody [CBP5I001] (ab50702) at 1/50 dilution + NIH3T3 whole cell lysate at 50 μg

Secondary

Mouse IgG antibody at 1/2500 dilution

Predicted band size: 265 kDa



Anti-CREBBP antibody [CBP5I001] (ab50702) at 1/100 dilution +
HeLa whole cell lysate at 50 µg

Secondary

Mouse IgG antibody at 1/2500 dilution

Predicted band size: 265 kDa

Please note: All products are "FOR RESEARCH USE ONLY. NOT FOR USE IN DIAGNOSTIC PROCEDURES"

Our Abpromise to you: Quality guaranteed and expert technical support

- Replacement or refund for products not performing as stated on the datasheet
- Valid for 12 months from date of delivery
- Response to your inquiry within 24 hours
- We provide support in Chinese, English, French, German, Japanese and Spanish
- Extensive multi-media technical resources to help you
- We investigate all quality concerns to ensure our products perform to the highest standards

If the product does not perform as described on this datasheet, we will offer a refund or replacement. For full details of the Abpromise, please visit <https://www.abcam.co.jp/abpromise> or contact our technical team.

Terms and conditions

- Guarantee only valid for products bought direct from Abcam or one of our authorized distributors