


Anti-CREBBP antibody ab10489

4 References [画像数 2](#)

製品の概要

製品名	Anti-CREBBP antibody
製品の詳細	Rabbit polyclonal to CREBBP
由来種	Rabbit
アプリケーション	適用あり: IP, WB
種交差性	交差種: Human 交差が予測される動物種: Chimpanzee 
免疫原	Synthetic peptide corresponding to Human CREBBP. Within exon 17.
ポジティブ・コントロール	Lysate from HeLa cells.
特記事項	<p>Cyclic AMP-responsive enhancer binding protein (CREB) binding protein (CBP) and p300 are closely related transcriptional coactivators that have been shown to directly interact with many different DNA-binding transcription factors including nuclear hormone receptors, CREB (cyclic AMP-responsive enhancer binding protein), c-Fos, c-Jun/v-Jun, c-Myb/v-Myb, TFIIIB and MyoD. Both CBP and p300 have been shown to display histone acetyltransferase (HAT) activity, capable of acetylating all four core histone particles in nucleosomes. As a result of HAT activity, it has been suggested CBP and p300 may play a direct role in activating chromatin for transcription. Single point mutations in CBP have been proposed as causative factors in the developmental abnormalities of Rubinstein-Taybi syndrome (RTS). Although both CBP and p300 appear to function similarly, the inability of p300 to rescue CBP malfunction iRTS suggests intrinsic functional differences between CBP and p300.</p> <p>The Life Science industry has been in the grips of a reproducibility crisis for a number of years. Abcam is leading the way in addressing this with our range of recombinant monoclonal antibodies and knockout edited cell lines for gold-standard validation. Please check that this product meets your needs before purchasing.</p> <p>If you have any questions, special requirements or concerns, please send us an inquiry and/or contact our Support team ahead of purchase. Recommended alternatives for this product can be found below, along with publications, customer reviews and Q&As</p>

製品の特性

製品の状態	Liquid
保存方法	Shipped at 4°C. Store at +4°C short term (1-2 weeks). Upon delivery aliquot. Store at -20°C. Avoid freeze / thaw cycle.

バッファー	pH: 7 Preservative: 0.1% Sodium azide Constituents: 0.021% PBS, 1.764% Sodium citrate, 1.815% Tris
精製度	Immunogen affinity purified
特記事項 (精製)	Antibodies were affinity purified using the peptide immobilized on solid support.
一次抗体 備考	Cyclic AMP-responsive enhancer binding protein (CREB) binding protein (CBP) and p300 are closely related transcriptional coactivators that have been shown to directly interact with many different DNA-binding transcription factors including nuclear hormone receptors, CREB (cyclic AMP-responsive enhancer binding protein), c-Fos, c-Jun/v-Jun, c-Myb/v-Myb, TFIIIB and MyoD. Both CBP and p300 have been shown to display histone acetyltransferase (HAT) activity, capable of acetylating all four core histone particles in nucleosomes. As a result of HAT activity, it has been suggested CBP and p300 may play a direct role in activating chromatin for transcription. Single point mutations in CBP have been proposed as causative factors in the developmental abnormalities of Rubinstein-Taybi syndrome (RTS). Although both CBP and p300 appear to function similarly, the inability of p300 to rescue CBP malfunction in RTS suggests intrinsic functional differences between CBP and p300.
ポリ/モノ	ポリクローナル
アイソタイプ	IgG

アプリケーション

The Abpromise guarantee **Abpromise保証は、次のテスト済みアプリケーションにおけるab10489の使用に適用されます**
 アプリケーションノートには、推奨の開始希釈率がありますが、適切な希釈率につきましてはご検討ください。

アプリケーション	Abreviews	特記事項
IP		Use a concentration of 1 - 4 µg/ml.
WB		Use a concentration of 0.4 µg/ml. Predicted molecular weight: 265 kDa.

ターゲット情報

機能	Acetylates histones, giving a specific tag for transcriptional activation. Also acetylates non-histone proteins, like NCOA3 coactivator. Binds specifically to phosphorylated CREB and enhances its transcriptional activity toward cAMP-responsive genes. Acts as a coactivator of ALX1 in the presence of EP300.
関連疾患	Note=Chromosomal aberrations involving CREBBP may be a cause of acute myeloid leukemias. Translocation t(8;16)(p11;p13) with MYST3/MOZ; translocation t(11;16)(q23;p13.3) with MLL/HRX; translocation t(10;16)(q22;p13) with MYST4/MORF. MYST3-CREBBP may induce leukemia by inhibiting RUNX1-mediated transcription. Defects in CREBBP are a cause of Rubinstein-Taybi syndrome type 1 (RSTS1) [MIM:180849]. RSTS1 is an autosomal dominant disorder characterized by craniofacial abnormalities, broad thumbs, broad big toes, mental retardation and a propensity for development of malignancies.
配列類似性	Contains 1 bromo domain. Contains 1 KIX domain. Contains 2 TAZ-type zinc fingers.

ドメイン

Contains 1 ZZ-type zinc finger.

翻訳後修飾

The KIX domain mediates binding to HIV-1 Tat.

Methylation of the KIX domain by CARM1 blocks association with CREB. This results in the blockade of CREB signaling, and in activation of apoptotic response.

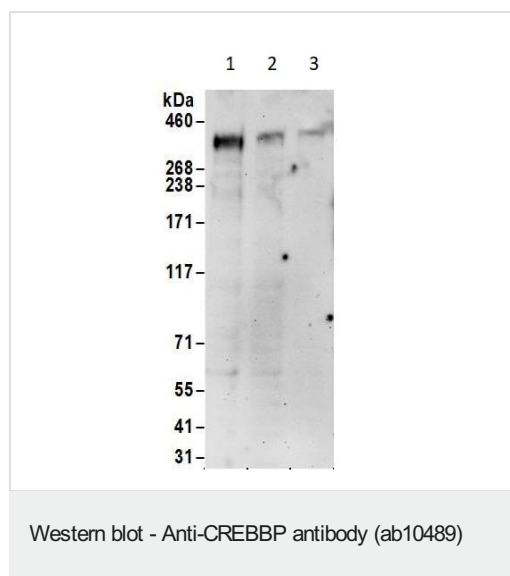
Phosphorylated upon DNA damage, probably by ATM or ATR.

Sumoylation negatively regulates transcriptional activity via the recruitment of DAAX.

細胞内局在

Cytoplasm. Nucleus. Recruited to nuclear bodies by SS18L1/CREST. In the presence of ALX1 relocalizes from the cytoplasm to the nucleus.

画像



All lanes : Anti-CREBBP antibody (ab10489) at 0.4 µg/ml

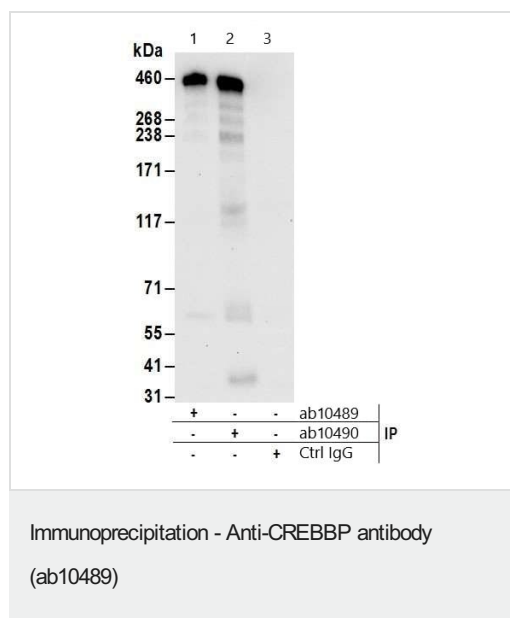
Lane 1 : HeLa cell lysate at 50 µg

Lane 2 : HeLa cell lysate at 15 µg

Lane 3 : HeLa cell lysate at 5 µg

Predicted band size: 265 kDa

Exposure time: 3 minutes



ab10489 immunoprecipitating CREBBP at 6 µg/ml lysate.

Lane 1: Anti-CREBBP antibody ab10489 in HeLa whole cell extract (1 mg per IP reaction; 20% of IP loaded).

Lane 2: Anti-CREBBP antibody **ab10490** in HeLa whole cell extract (1 mg per IP reaction; 20% of IP loaded).

Lane 3: IgG control.

For blotting immunoprecipitated CREBBP, ab10489 was used at 1 µg/mL.

Detection: Chemiluminescence with an exposure time of 30 seconds.

Please note: All products are "FOR RESEARCH USE ONLY. NOT FOR USE IN DIAGNOSTIC PROCEDURES"

Our Abpromise to you: Quality guaranteed and expert technical support

-
- Replacement or refund for products not performing as stated on the datasheet
 - Valid for 12 months from date of delivery
 - Response to your inquiry within 24 hours

 - We provide support in Chinese, English, French, German, Japanese and Spanish
 - Extensive multi-media technical resources to help you
 - We investigate all quality concerns to ensure our products perform to the highest standards

If the product does not perform as described on this datasheet, we will offer a refund or replacement. For full details of the Abpromise, please visit <https://www.abcam.co.jp/abpromise> or contact our technical team.

Terms and conditions

- Guarantee only valid for products bought direct from Abcam or one of our authorized distributors