


Anti-CREB antibody [E306] ab32515

KO 評価済 リコンビナント RabMAb

★★★★★ [3 Abreviews](#) [126 References](#) [画像数 4](#)

製品の概要

製品名	Anti-CREB antibody [E306]
製品の詳細	Rabbit monoclonal [E306] to CREB
由来種	Rabbit
特異性	This antibody recognizes CREB, and can also recognize the splice isoform of CREB.
アプリケーション	適用あり: WB, IHC-P 適用なし: Flow Cyt
種交差性	交差種: Mouse, Rat, Human 交差が予測される動物種: Cow 
免疫原	Synthetic peptide within Human CREB aa 250-350. The exact sequence is proprietary.
ポジティブ・コントロール	ICC/IF: PC 12 cells. WB: A431 cell lysate. IHC-P: Prostatic carcinoma tissue.
特記事項	This product is a recombinant monoclonal antibody, which offers several advantages including: <ul style="list-style-type: none"> - High batch-to-batch consistency and reproducibility - Improved sensitivity and specificity - Long-term security of supply - Animal-free production For more information see here . Our RabMAb [®] technology is a patented hybridoma-based technology for making rabbit monoclonal antibodies. For details on our patents, please refer to RabMAb[®] patents .

製品の特性

製品の状態	Liquid
保存方法	Shipped at 4°C. Store at +4°C short term (1-2 weeks). Upon delivery aliquot. Store at -20°C. Avoid freeze / thaw cycle.
バッファー	pH: 7.20 Preservative: 0.01% Sodium azide Constituents: 49% PBS, 50% Glycerol (glycerin, glycerine), 0.05% BSA
精製度	Protein A purified
ポリ/モノ	モノクローナル

クローン名	E306
アイソタイプ	IgG

アプリケーション

The Abpromise guarantee Abpromise保証は、次のテスト済みアプリケーションにおけるab32515の使用に適用されます
アプリケーションノートには、推奨の開始希釈率がありますが、適切な希釈率につきましてはご検討ください。

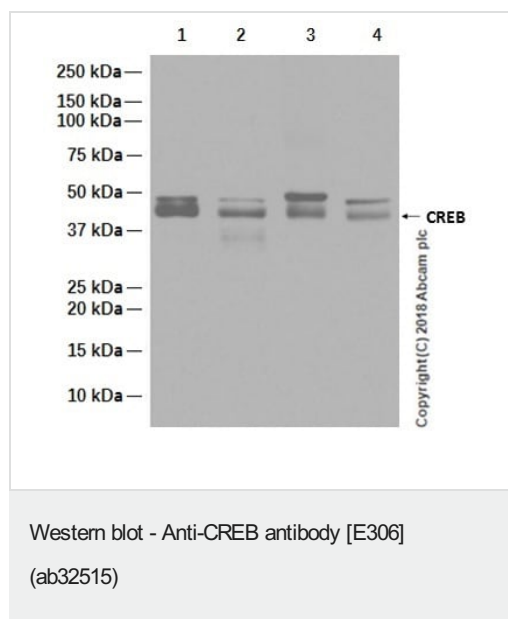
アプリケーション	Abreviews	特記事項
WB	★★★★★ (2)	1/500 - 1/1000. Detects a band of approximately 40 kDa (predicted molecular weight: 37 kDa).
IHC-P		1/500. Perform heat mediated antigen retrieval with citrate buffer pH 6 before commencing with IHC staining protocol.

追加情報 Is unsuitable for Flow Cyt.

ターゲット情報

機能	This protein binds the cAMP response element (CRE), a sequence present in many viral and cellular promoters. CREB stimulates transcription on binding to the CRE. Transcription activation is enhanced by the TORC coactivators which act independently of Ser-133 phosphorylation. Implicated in synchronization of circadian rhythmicity.
関連疾患	Defects in CREB1 may be a cause of angiomatoid fibrous histiocytoma (AFH) [MIM:612160]. A distinct variant of malignant fibrous histiocytoma that typically occurs in children and adolescents and is manifest by nodular subcutaneous growth. Characteristic microscopic features include lobulated sheets of histiocyte-like cells intimately associated with areas of hemorrhage and cystic pseudovascular spaces, as well as a striking cuffing of inflammatory cells, mimicking a lymph node metastasis. Note=A chromosomal aberration involving CREB1 is found in a patient with angiomatoid fibrous histiocytoma. Translocation t(2;22)(q33;q12) with CREB1 generates a EWSR1/CREB1 fusion gene that is most common genetic abnormality in this tumor type.
配列類似性	Belongs to the bZIP family. Contains 1 bZIP domain. Contains 1 KID (kinase-inducible) domain.
翻訳後修飾	Stimulated by phosphorylation. Phosphorylation of both Ser-133 and Ser-142 in the SCN regulates the activity of CREB and participates in circadian rhythm generation. Phosphorylation of Ser-133 allows CREBBP binding (By similarity). Phosphorylated upon DNA damage, probably by ATM or ATR. Sumoylated by SUMO1. Sumoylation on Lys-304, but not on Lys-285, is required for nuclear localization of this protein. Sumoylation is enhanced under hypoxia, promoting nuclear localization and stabilization.
細胞内局在	Nucleus.

画像



All lanes : Anti-CREB antibody [E306] (ab32515) at 0.03 µg/ml

Lane 1 : HeLa (Human cervix adenocarcinoma epithelial cell) whole cell lysate at 20 µg

Lane 2 : A431 (Human epidermoid carcinoma epithelial cell) whole cell lysate at 20 µg

Lane 3 : PC-12 (Rat adrenal gland pheochromocytoma) whole cell lysate at 20 µg

Lane 4 : NIH/3T3 (Mouse embryonic fibroblast) whole cell lysate

Secondary

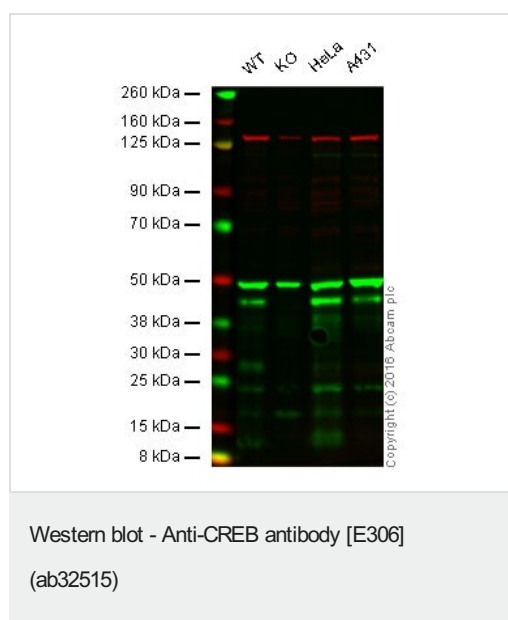
All lanes : Goat Anti-Rabbit IgG H&L (HRP) ([ab97051](#)) at 1/20000 dilution

Predicted band size: 37 kDa

Observed band size: 40 kDa

Exposure time: 15 seconds

Blocking and diluting buffer: 5% NFDM/TBST.



Lane 1: Wild-type HAP1 cell lysate (20 µg)

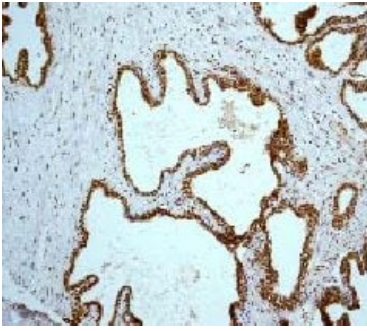
Lane 2: CREB knockout HAP1 cell lysate (20 µg)

Lane 3: HeLa cell lysate (20 µg)

Lane 4: A431 cell lysate (20 µg)

Lanes 1 - 4: Merged signal (red and green). Green - ab32515 observed at 44 kDa. Red - loading control, [ab18058](#), observed at 214 kDa.

ab32515 was shown to recognize CREB in wild-type HAP1 cells along with additional cross-reactive bands. No band was observed when CREB knockout samples examined. Wild-type and knockout samples were subjected to SDS-PAGE. ab32515 and [ab18058](#) (loading control to Vinculin) diluted to 1/500 and 1/10000 respectively and incubated overnight at 4°C. Blots were developed with Goat anti-Rabbit IgG H&L (IRDye® 800CW) preadsorbed ([ab216773](#)) and Goat anti-Mouse IgG H&L (IRDye® 680RD) preadsorbed ([ab216776](#)) secondary antibodies at 1/10000 dilution for 1 hour at room temperature before imaging.



Ab32515, at a 1/500 dilution, staining CREB in paraffin embedded prostatic carcinoma tissue sections by Immunohistochemistry.

Perform heat mediated antigen retrieval with citrate buffer pH 6 before commencing with IHC staining protocol.

Immunohistochemistry (Formalin/PFA-fixed paraffin-embedded sections) - Anti-CREB antibody [E306] (ab32515)

Why choose a recombinant antibody?



Research with confidence
Consistent and reproducible results



Long-term and scalable supply
Recombinant technology



Success from the first experiment
Confirmed specificity



Ethical standards compliant
Animal-free production

Anti-CREB antibody [E306] (ab32515)

Please note: All products are "FOR RESEARCH USE ONLY. NOT FOR USE IN DIAGNOSTIC PROCEDURES"

Our Abpromise to you: Quality guaranteed and expert technical support

- Replacement or refund for products not performing as stated on the datasheet
- Valid for 12 months from date of delivery
- Response to your inquiry within 24 hours
- We provide support in Chinese, English, French, German, Japanese and Spanish
- Extensive multi-media technical resources to help you
- We investigate all quality concerns to ensure our products perform to the highest standards

If the product does not perform as described on this datasheet, we will offer a refund or replacement. For full details of the Abpromise, please visit <https://www.abcam.co.jp/abpromise> or contact our technical team.

Terms and conditions

- Guarantee only valid for products bought direct from Abcam or one of our authorized distributors