

Anti-CREB antibody ab31387

★★★★★ [4 Abreviews](#) [63 References](#) [画像数 3](#)

製品の概要

製品名	Anti-CREB antibody
製品の詳細	Rabbit polyclonal to CREB
由来種	Rabbit
特異性	Immunogen has 92% alignment to ATF-1
アプリケーション	適用あり: WB, IHC-P
種交差性	交差種: Human
免疫原	Synthetic peptide (Human) - non-phosphopeptide derived from human CREB around the phosphorylation site of Serine 133.
特記事項	<p>The Life Science industry has been in the grips of a reproducibility crisis for a number of years. Abcam is leading the way in addressing this with our range of recombinant monoclonal antibodies and knockout edited cell lines for gold-standard validation. Please check that this product meets your needs before purchasing.</p> <p>If you have any questions, special requirements or concerns, please send us an inquiry and/or contact our Support team ahead of purchase. Recommended alternatives for this product can be found below, along with publications, customer reviews and Q&As</p>

製品の特性

製品の状態	Liquid
保存方法	Shipped at 4°C. Store at +4°C short term (1-2 weeks). Upon delivery aliquot. Store at -20°C. Avoid freeze / thaw cycle.
バッファー	<p>pH: 7</p> <p>Preservative: 0.02% Sodium azide</p> <p>Constituents: PBS, 50% Glycerol, 0.87% Sodium chloride</p>
精製度	Without Mg ²⁺ and Ca ²⁺
ポリモノ	Immunogen affinity purified
アイソタイプ	ポリクローナル
	IgG

アプリケーション

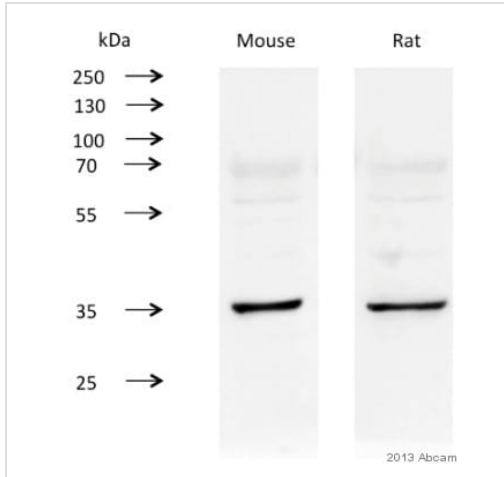
The Abpromise guarantee Abpromise保証は、 次のテスト済みアプリケーションにおけるab31387の使用に適用されます
アプリケーションノートには、推奨の開始希釈率がありますが、適切な希釈率につきましてはご検討ください。

アプリケーション	Abreviews	特記事項
WB	★★★★★ (1)	1/500 - 1/1000. Predicted molecular weight: 37 kDa.
IHC-P		Use at an assay dependent concentration.

ターゲット情報

機能	This protein binds the cAMP response element (CRE), a sequence present in many viral and cellular promoters. CREB stimulates transcription on binding to the CRE. Transcription activation is enhanced by the TORC coactivators which act independently of Ser-133 phosphorylation. Implicated in synchronization of circadian rhythmicity.
関連疾患	Defects in CREB1 may be a cause of angiomatoid fibrous histiocyoma (AFH) [MIM:612160]. A distinct variant of malignant fibrous histiocyoma that typically occurs in children and adolescents and is manifest by nodular subcutaneous growth. Characteristic microscopic features include lobulated sheets of histiocyte-like cells intimately associated with areas of hemorrhage and cystic pseudovascular spaces, as well as a striking cuffing of inflammatory cells, mimicking a lymph node metastasis. Note=A chromosomal aberration involving CREB1 is found in a patient with angiomatoid fibrous histiocyoma. Translocation t(2;22)(q33;q12) with CREB1 generates a EWSR1/CREB1 fusion gene that is most common genetic abnormality in this tumor type.
配列類似性	Belongs to the bZIP family. Contains 1 bZIP domain. Contains 1 KID (kinase-inducible) domain.
翻訳後修飾	Stimulated by phosphorylation. Phosphorylation of both Ser-133 and Ser-142 in the SCN regulates the activity of CREB and participates in circadian rhythm generation. Phosphorylation of Ser-133 allows CREBBP binding (By similarity). Phosphorylated upon DNA damage, probably by ATM or ATR. Sumoylated by SUMO1. Sumoylation on Lys-304, but not on Lys-285, is required for nuclear localization of this protein. Sumoylation is enhanced under hypoxia, promoting nuclear localization and stabilization.
細胞内局在	Nucleus.

画像



Western blot - Anti-CREB antibody (ab31387)

This image is courtesy of an anonymous Abreview

All lanes : Anti-CREB antibody (ab31387) at 1/1000 dilution

Lane 1 : Mouse primary hippocampal neurons whole cell lysate

Lane 2 : Rat primary hippocampal neurons whole cell lysate

Lysates/proteins at 30 µg per lane.

Secondary

All lanes : Undiluted HRP-conjugated Goat anti-rabbit IgG polyclonal

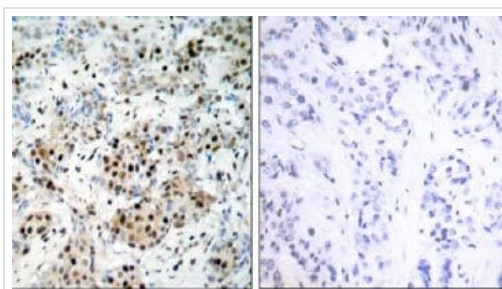
Developed using the ECL technique.

Performed under reducing conditions.

Predicted band size: 37 kDa

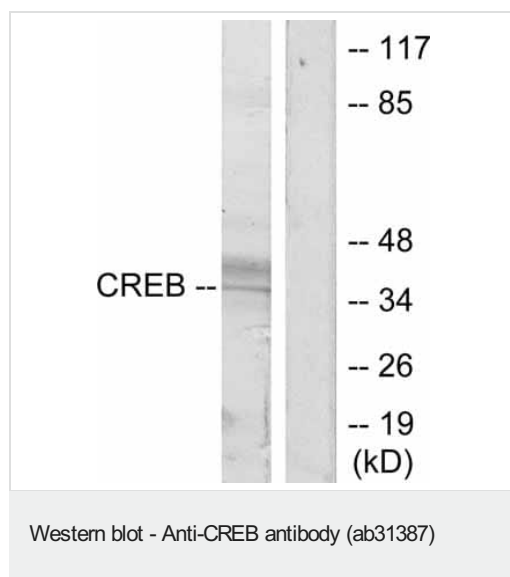
Observed band size: 37 kDa

Exposure time: 10 seconds



Immunohistochemistry (Formalin/PFA-fixed paraffin-embedded sections) - Anti-CREB antibody (ab31387)

Immunohistochemical analysis of paraffin embedded breast carcinoma tissue sections, using 1/50 ab31387. Left: Untreated sample; Right: Sample treated with synthesized peptide (negative control).



Lane 1 : Anti-CREB antibody (ab31387) at 1/500 dilution

Lane 2 : Anti-CREB antibody (ab31387) at 1/500 dilution (treated with synthesized peptide)

All lanes : HeLa cell extract

Predicted band size: 37 kDa

Please note: All products are "FOR RESEARCH USE ONLY. NOT FOR USE IN DIAGNOSTIC PROCEDURES"

Our Abpromise to you: Quality guaranteed and expert technical support

- Replacement or refund for products not performing as stated on the datasheet
- Valid for 12 months from date of delivery
- Response to your inquiry within 24 hours
- We provide support in Chinese, English, French, German, Japanese and Spanish
- Extensive multi-media technical resources to help you
- We investigate all quality concerns to ensure our products perform to the highest standards

If the product does not perform as described on this datasheet, we will offer a refund or replacement. For full details of the Abpromise, please visit <https://www.abcam.co.jp/abpromise> or contact our technical team.

Terms and conditions

- Guarantee only valid for products bought direct from Abcam or one of our authorized distributors