

### Anti-Creatine kinase B type antibody [EPR3926] ab108388

KO 評価済 リコンビナント RabMAb

7 References 画像数 6

#### 製品の概要

製品名	Anti-Creatine kinase B type antibody [EPR3926]
製品の詳細	Rabbit monoclonal [EPR3926] to Creatine kinase B type
由来種	Rabbit
特異性	The mouse and rat recommendation is based on the WB results. We do not guarantee IHC-P for mouse and rat.
アプリケーション	<b>適用あり:</b> WB, IHC-P
種交差性	<b>交差種:</b> Mouse, Rat, Human
免疫原	Synthetic peptide. This information is proprietary to Abcam and/or its suppliers.
ポジティブ・コントロール	IHC-P: Human heart and cerebrum tissue. WB: 293T, SH SY5Y, Y79, HeLa cell lysates Mouse brain lysates and Rat brain lysates.
特記事項	<p>This product is a recombinant monoclonal antibody, which offers several advantages including:</p> <ul style="list-style-type: none"> <li>- High batch-to-batch consistency and reproducibility</li> <li>- Improved sensitivity and specificity</li> <li>- Long-term security of supply</li> <li>- Animal-free production</li> </ul> <p>For more information <a href="#">see here</a>.</p> <p>Our RabMAb<sup>®</sup> technology is a patented hybridoma-based technology for making rabbit monoclonal antibodies. For details on our patents, please refer to <a href="#">RabMAb<sup>®</sup> patents</a>.</p>

#### 製品の特性

製品の状態	Liquid
保存方法	Shipped at 4°C. Store at +4°C short term (1-2 weeks). Upon delivery aliquot. Store at -20°C. Stable for 12 months at -20°C.
バッファー	<p>pH: 7.20</p> <p>Preservative: 0.01% Sodium azide</p> <p>Constituents: 59% PBS, 40% Glycerol (glycerin, glycerine), 0.05% BSA</p>
精製度	Protein A purified
ポリ/モノ	モノクローナル

クローン名                      EPR3926  
アイソタイプ                    IgG

#### アプリケーション

**The Abpromise guarantee**           **Abpromise保証は、** 次のテスト済みアプリケーションにおけるab108388の使用に適用されます  
アプリケーションノートには、推奨の開始希釈率がありますが、適切な希釈率につきましてはご検討ください。

アプリケーション	Abreviews	特記事項
WB		1/50000 - 1/200000. Predicted molecular weight: 43 kDa.
IHC-P		1/500. Perform heat mediated antigen retrieval with citrate buffer pH 6 before commencing with IHC staining protocol. See <b><u>IHC antigen retrieval protocols</u></b> .  <b>For unpurified use at 1/100 - 1/250.</b>  The mouse and rat recommendation is based on the WB results. We do not guarantee IHC-P for mouse and rat.

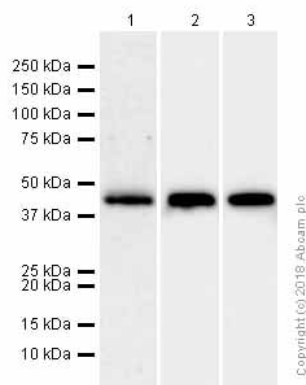
#### ターゲット情報

**機能**                                      Reversibly catalyzes the transfer of phosphate between ATP and various phosphogens (e.g. creatine phosphate). Creatine kinase isoenzymes play a central role in energy transduction in tissues with large, fluctuating energy demands, such as skeletal muscle, heart, brain and spermatozoa.

**配列類似性**                                Belongs to the ATP:guanido phosphotransferase family.  
Contains 1 phosphagen kinase C-terminal domain.  
Contains 1 phosphagen kinase N-terminal domain.

**細胞内局在**                                Cytoplasm.

#### 画像



Western blot - Anti-Creatine kinase B type antibody [EPR3926] (ab108388)

**All lanes :** Anti-Creatine kinase B type antibody [EPR3926] (ab108388) at 1/50000 dilution (Purified)

**Lane 1 :** HeLa (Human cervix adenocarcinoma epithelial cell) whole cell lysates

**Lane 2 :** Mouse brain lysates

**Lane 3 :** Rat brain lysates

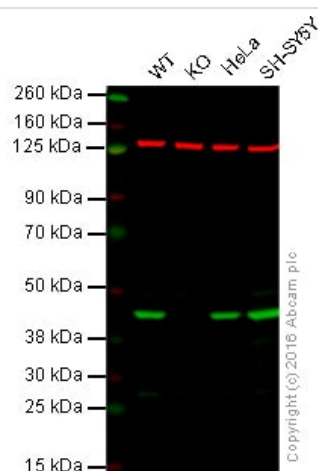
Lysates/proteins at 20 µg per lane.

### Secondary

**All lanes :** Goat Anti-Rabbit IgG H&L (HRP) ([ab97051](#)) at 1/20000 dilution

**Predicted band size:** 43 kDa

**Observed band size:** 43 kDa



Western blot - Anti-Creatine kinase B type antibody [EPR3926] (ab108388)

**Lane 1:** Wild-type HAP1 cell lysate (20 µg)

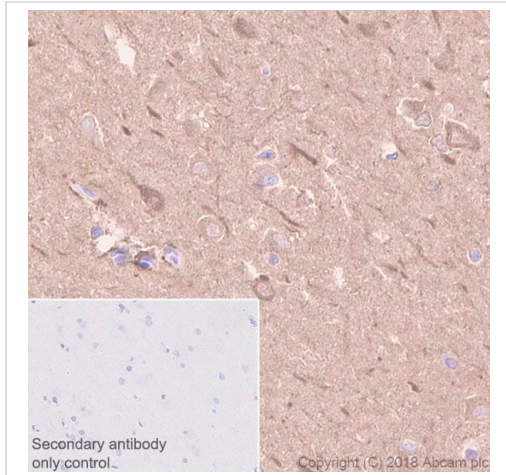
**Lane 2:** Creatine kinase B knockout HAP1 cell lysate (20 µg)

**Lane 3:** HeLa cell lysate (20 µg)

**Lane 4:** SH-SY5Y cell lysate (20 µg)

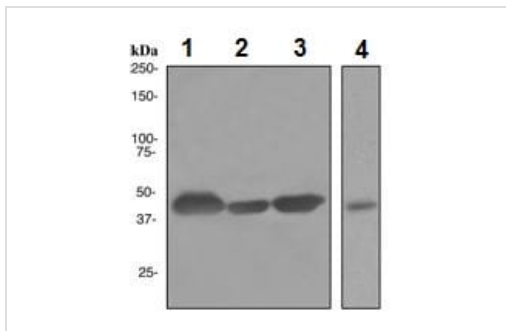
**Lanes 1 - 4:** Merged signal (red and green). Green - ab108388 observed at 45 kDa. Red - loading control, [ab18058](#), observed at 124 kDa.

ab108388 was shown to specifically react with Creatine kinase B when Creatine kinase B knockout samples were used. Wild-type and Creatine kinase B knockout samples were subjected to SDS-PAGE. ab108388 and [ab18058](#) (loading control to vinculin) were diluted 1/50000 and 1/10000 respectively and incubated overnight at 4°C. Blots were developed with Goat anti-Rabbit IgG H&L (IRDye® 800CW) preadsorbed ([ab216773](#)) and Goat anti-Mouse IgG H&L (IRDye® 680RD) preadsorbed ([ab216776](#)) secondary antibodies at 1/10000 dilution for 1 hour at room temperature before imaging.



Immunohistochemistry (Formalin/PFA-fixed paraffin-embedded sections) analysis of Human cerebrum tissue sections labeling Creatine kinase B type with purified ab108388 at 1/500 dilution (1.14 µg/ml). Perform heat mediated antigen retrieval using Citrate buffer, pH 6.0. ImmunoHistoProbe one step HRP Polymer (ready to use) was used as the secondary antibody. Negative control: PBS instead of the primary antibody. Hematoxylin was used as a counterstain.

Immunohistochemistry (Formalin/PFA-fixed paraffin-embedded sections) - Anti-Creatine kinase B type antibody [EPR3926] (ab108388)



Western blot - Anti-Creatine kinase B type antibody [EPR3926] (ab108388)

**All lanes :** Anti-Creatine kinase B type antibody [EPR3926] (ab108388) at 1/50000 dilution

**Lane 1 :** 293T cell lysate

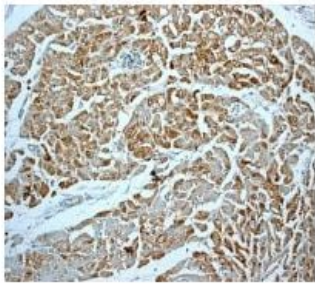
**Lane 2 :** SH SY5Y cell lysate

**Lane 3 :** Y79 cell lysate

**Lane 4 :** HeLa cell lysate

Lysates/proteins at 10 µg per lane.

**Predicted band size:** 43 kDa



ab108388, at 1/100 dilution, staining Creatine Kinase BB in Human heart by Immunohistochemistry, Paraffin-embedded tissue.

Immunohistochemistry (Formalin/PFA-fixed paraffin-embedded sections) - Anti-Creatine kinase B type antibody [EPR3926] (ab108388)

Why choose a recombinant antibody?



Research with confidence  
Consistent and reproducible results



Long-term and scalable supply  
Recombinant technology



Success from the first experiment  
Confirmed specificity



Ethical standards compliant  
Animal-free production

Anti-Creatine kinase B type antibody [EPR3926] (ab108388)

**Please note:** All products are "FOR RESEARCH USE ONLY. NOT FOR USE IN DIAGNOSTIC PROCEDURES"

### Our Abpromise to you: Quality guaranteed and expert technical support

- Replacement or refund for products not performing as stated on the datasheet
- Valid for 12 months from date of delivery
- Response to your inquiry within 24 hours
- We provide support in Chinese, English, French, German, Japanese and Spanish
- Extensive multi-media technical resources to help you
- We investigate all quality concerns to ensure our products perform to the highest standards

If the product does not perform as described on this datasheet, we will offer a refund or replacement. For full details of the Abpromise, please visit <https://www.abcam.co.jp/abpromise> or contact our technical team.

### Terms and conditions

- Guarantee only valid for products bought direct from Abcam or one of our authorized distributors