




Anti-Creatine kinase B type antibody [CK-BYK/21E10] ab125114

KO 評価済

4 References 画像数 1

製品の概要

製品名	Anti-Creatine kinase B type antibody [CK-BYK/21E10]
製品の詳細	Mouse monoclonal [CK-BYK/21E10] to Creatine kinase B type
由来種	Mouse
アプリケーション	適用あり: WB
種交差性	交差種: Mouse, Human 交差が予測される動物種: Rat, Rabbit, Cow, Dog 
免疫原	Synthetic peptide: SNSHNALKLRFPAEDEF , corresponding to N terminal amino acids 4-20 of Human Creatine kinase B type.  Run BLAST with  Run BLAST with
ポジティブ・コントロール	Human Purkinje cells.
特記事項	<p>The Life Science industry has been in the grips of a reproducibility crisis for a number of years. Abcam is leading the way in addressing this with our range of recombinant monoclonal antibodies and knockout edited cell lines for gold-standard validation. Please check that this product meets your needs before purchasing.</p> <p>If you have any questions, special requirements or concerns, please send us an inquiry and/or contact our Support team ahead of purchase. Recommended alternatives for this product can be found below, along with publications, customer reviews and Q&As</p>

製品の特性

製品の状態	Liquid
保存方法	Shipped at 4°C. Upon delivery aliquot and store at -20°C. Avoid freeze / thaw cycles.
バッファー	Preservative: 0.02% Sodium azide Constituents: 99% PBS, 0.1% BSA
精製度	Protein G purified
ポリ/モノ	モノクローナル
クローン名	CK-BYK/21E10

アプリケーション

The Abpromise guarantee

Abpromise保証は、次のテスト済みアプリケーションにおけるab125114の使用に適用されます

アプリケーションノートには、推奨の開始希釈率がありますが、適切な希釈率につきましてはご確認ください。

アプリケーション	Abreviews	特記事項
WB		1/50. Detects a band of approximately 43-46 kDa (predicted molecular weight: 43 kDa).

ターゲット情報

機能

Reversibly catalyzes the transfer of phosphate between ATP and various phosphagens (e.g. creatine phosphate). Creatine kinase isoenzymes play a central role in energy transduction in tissues with large, fluctuating energy demands, such as skeletal muscle, heart, brain and spermatozoa.

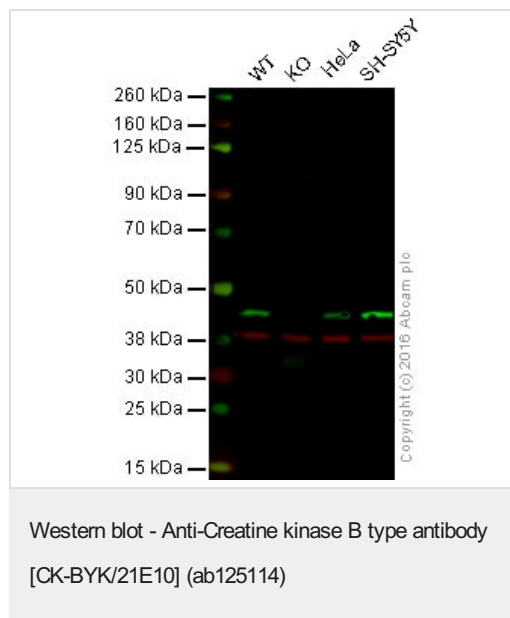
配列類似性

Belongs to the ATP:guanido phosphotransferase family.
Contains 1 phosphagen kinase C-terminal domain.
Contains 1 phosphagen kinase N-terminal domain.

細胞内局在

Cytoplasm.

画像



Lane 1: Wild-type HAP1 cell lysate (20 µg)

Lane 2: Creatine kinase B knockout HAP1 cell lysate (20 µg)

Lane 3: HeLa cell lysate (20 µg)

Lane 4: SH-SY5Y cell lysate (20 µg)

Lanes 1 - 4: Merged signal (red and green). Green - ab125114 observed at 45 kDa. Red - loading control, **ab181602**, observed at 37 kDa.

ab125114 was shown to recognize Creatine kinase

B when Creatine kinase B knockout samples were used, along with additional cross-reactive bands. Wild-type and Creatine kinase B knockout samples were subjected to SDS-PAGE. ab125114 and **ab181602** (loading control to GAPDH) were diluted 1/50 and 1/10000 respectively and incubated overnight at 4°C. Blots were developed with Goat anti-Mouse IgG H&L (IRDye® 800CW) preadsorbed (**ab216772**) and Goat Anti-Rabbit IgG H&L (IRDye® 680RD) preadsorbed (**ab216777**) secondary antibodies at 1/10000 dilution for 1 hour at room temperature before imaging.

Please note: All products are "FOR RESEARCH USE ONLY. NOT FOR USE IN DIAGNOSTIC PROCEDURES"

Our Abpromise to you: Quality guaranteed and expert technical support

- Replacement or refund for products not performing as stated on the datasheet
- Valid for 12 months from date of delivery
- Response to your inquiry within 24 hours

- We provide support in Chinese, English, French, German, Japanese and Spanish
- Extensive multi-media technical resources to help you
- We investigate all quality concerns to ensure our products perform to the highest standards

If the product does not perform as described on this datasheet, we will offer a refund or replacement. For full details of the Abpromise, please visit <https://www.abcam.co.jp/abpromise> or contact our technical team.

Terms and conditions

- Guarantee only valid for products bought direct from Abcam or one of our authorized distributors