


Anti-CPSF73 antibody ab72295

★★★★★ [8 Abreviews](#) [4 References](#) [画像数 3](#)

製品の概要

製品名	Anti-CPSF73 antibody
製品の詳細	Rabbit polyclonal to CPSF73
由来種	Rabbit
アプリケーション	適用あり: WB, IP, IHC-P
種交差性	交差種: Mouse, Human 交差が予測される動物種: Rabbit, Horse, Cow, Dog, Chimpanzee, Rhesus monkey, Gorilla, Orangutan, Elephant 
免疫原	Synthetic peptide corresponding to Human CPSF73. Database link: Q9UKF6
ポジティブ・コントロール	WB: HeLa, HEK293T, NIH 3T3. IHC-P: human breast carcinoma, mouse teratoma tissues. IP: HeLa cells.
特記事項	<p>The Life Science industry has been in the grips of a reproducibility crisis for a number of years. Abcam is leading the way in addressing this with our range of recombinant monoclonal antibodies and knockout edited cell lines for gold-standard validation. Please check that this product meets your needs before purchasing.</p> <p>If you have any questions, special requirements or concerns, please send us an inquiry and/or contact our Support team ahead of purchase. Recommended alternatives for this product can be found below, along with publications, customer reviews and Q&As</p>

製品の特性

製品の状態	Liquid
保存方法	Shipped at 4°C. Upon delivery aliquot and store at -20°C. Avoid freeze / thaw cycles.
バッファー	pH: 6.8 Preservative: 0.09% Sodium azide Constituents: 0.1% BSA, Tris buffered saline
精製度	Immunogen affinity purified
特記事項(精製)	ab72295 was affinity purified using an epitope specific to CPSF73 immobilized on solid support.
ポリ/モノ	ポリクローナル
アイソタイプ	IgG

アプリケーション

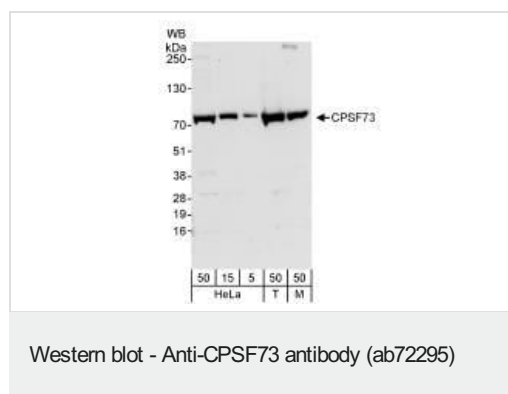
The Abpromise guarantee Abpromise保証は、次のテスト済みアプリケーションにおけるab72295の使用に適用されます
アプリケーションノートには、推奨の開始希釈率がありますが、適切な希釈率につきましてはご検討ください。

アプリケーション	Abreviews	特記事項
WB	★★★★☆ (5)	1/2000 - 1/10000. Detects a band of approximately 77 kDa (predicted molecular weight: 77 kDa).
IP	★★★★★ (2)	Use at 2-5 µg/mg of lysate.
IHC-P		1/200.

ターゲット情報

機能	Component of the cleavage and polyadenylation specificity factor (CPSF) complex that play a key role in pre-mRNA 3'-end formation, recognizing the AAUAAA signal sequence and interacting with poly(A) polymerase and other factors to bring about cleavage and poly(A) addition. Has endonuclease activity, and functions as mRNA 3'-end-processing endonuclease. Also involved in the histone 3'-end pre-mRNA processing. U7 snRNP-dependent protein that induces both the 3'-endoribonucleolytic cleavage of histone pre-mRNAs and acts as a 5' to 3' exonuclease for degrading the subsequent downstream cleavage product (DCP) of mature histone mRNAs. Cleavage occurs after the 5'-ACCCA-3' sequence in the histone pre-mRNA leaving a 3'hydroxyl group on the upstream fragment containing the stem loop (SL) and 5' phosphate on the downstream cleavage product (DCP) starting with CU nucleotides. The U7-dependent 5' to 3' exonuclease activity is processive and degrades the DCP RNA substrate even after complete removal of the U7-binding site. Binds to the downstream cleavage product (DCP) of histone pre-mRNAs and the cleaved DCP RNA substrate in a U7 snRNP dependent manner.
配列類似性	Belongs to the metallo-beta-lactamase superfamily. RNA-metabolizing metallo-beta-lactamase-like family. CPSF3 subfamily.
翻訳後修飾	Sumoylated on Lys-462, Lys-465 and Lys-545, preferentially by SUMO3.
細胞内局在	Nucleus.

画像



All lanes : Anti-CPSF73 antibody (ab72295) at 0.04 µg/ml

Lane 1 : HeLa whole cell

lysate at 50 µg

Lane 2 : HeLa whole cell

lysate at 15 µg

Lane 3 : HeLa whole cell

lysate at 5 µg

Lane 4 : 293T whole cell

lysate at 50 µg

Lane 5 : Mouse NIH3T3 whole cell

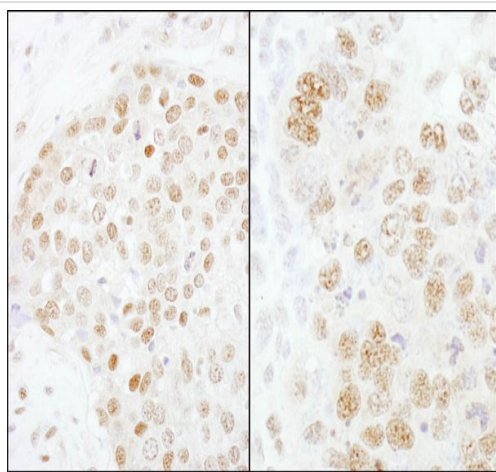
lysate at 50 µg

Developed using the ECL technique.

Predicted band size: 77 kDa

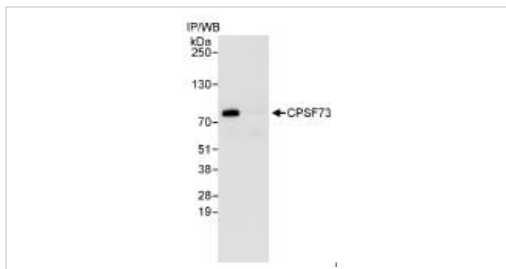
Observed band size: 77 kDa

Exposure time: 30 seconds



Immunohistochemistry (Formalin/PFA-fixed paraffin-embedded sections) - Anti-CPSF73 antibody (ab72295)

Immunohistochemistry (Formalin/PFA-fixed paraffin-embedded sections) analysis of human breast carcinoma (left) and mouse teratoma (right) tissues labelling CPSF73 with ab72295 at 1/200 (1µg/ml). Detection: DAB.



Immunoprecipitation - Anti-CPSF73 antibody (ab72295)

Detection of CPSF73 by Western Blot of Immunoprecipitate. Lane 1: ab72295, at 0.1µg/ml, staining CPSF73 in HeLa whole cell lysate immunoprecipitated using **ab72225** at 3µg/mg lysate (1 mg/IP; 20% of IP loaded).

Detection: Chemiluminescence with an exposure time of 30 seconds.

Please note: All products are "FOR RESEARCH USE ONLY. NOT FOR USE IN DIAGNOSTIC PROCEDURES"

Our Abpromise to you: Quality guaranteed and expert technical support

- Replacement or refund for products not performing as stated on the datasheet
- Valid for 12 months from date of delivery

- Response to your inquiry within 24 hours
- We provide support in Chinese, English, French, German, Japanese and Spanish
- Extensive multi-media technical resources to help you
- We investigate all quality concerns to ensure our products perform to the highest standards

If the product does not perform as described on this datasheet, we will offer a refund or replacement. For full details of the Abpromise, please visit <https://www.abcam.co.jp/abpromise> or contact our technical team.

Terms and conditions

- Guarantee only valid for products bought direct from Abcam or one of our authorized distributors